

Purified anti-CD3 Antibody (Previously Covance catalog# MMS-5212)

| | |
|--------------------------|--|
| Catalog# / Size | 830301 / 100 µL |
| Clone | BC3 |
| Regulatory Status | RUO |
| Other Names | T-cell surface glycoprotein CD3 epsilon chain, CD3-epsilon, T-cell surface antigen T3/Leu-4 epsilon chain, CD3e antigen, epsilon polypeptide (TiT3 complex), T-cell antigen receptor complex, epsilon subunit of T3, T3E, TCRE |
| Previously | Covance Catalog# MMS-5212 |
| Isotype | Mouse IgG2b, κ |
| Description | CD3ε is a 20 kD chain of the CD3/T-cell receptor (TCR) complex which is composed of two CD3ε, one CD3γ, one CD3δ, one CD3ζ (CD247), and a T-cell receptor (α/β or γ/δ) heterodimer. It is found on all mature T lymphocytes, NK-T cells, and some thymocytes. CD3, also known as T3, is a member of the immunoglobulin superfamily that plays a role in antigen recognition, signal transduction, and T cell activation. |

Product Details

| | |
|-------------------------------|---|
| Verified Reactivity | Human |
| Antibody Type | Monoclonal |
| Host Species | Mouse |
| Immunogen | This monoclonal antibody was raised against human CD3. |
| Formulation | Phosphate-buffered solution. |
| Preparation | The antibody was purified by affinity chromatography. |
| Concentration | 1 mg/ml |
| Storage & Handling | The antibody solution should be stored undiluted between 2°C and 8°C. Please note the storage condition for this antibody has been changed from -20°C to between 2°C and 8°C. You can also check your vial or your CoA to find the most accurate storage condition for this antibody. |
| Application | FC - Quality tested |
| Recommended Usage | Each lot of this antibody is quality control tested by immunofluorescent staining with flow cytometric analysis. For flow cytometric staining, the suggested use of this reagent is 1.0 - 2.0 µg/ml. It is recommended that the reagent be titrated for optimal performance for each application. |
| Application Notes | This antibody is effective in flow cytometry (FC). |
| RRID | AB_2564937 (BioLegend Cat. No. 830301) |

Antigen Details

| | |
|---------------------------|--|
| Biology Area | Cell Biology, Signal Transduction |
| Molecular Family | CD Molecules |
| Antigen References | 1. Barclay N, <i>et al.</i> 1993. <i>The Leucocyte FactsBook</i> . Academic Press. San Diego. 2. Beverly P, <i>et al.</i> 1981. <i>Eur. J. Immunol.</i> 11:329. 3. Lanier L, <i>et al.</i> 1986. <i>J. Immunol.</i> 137:2501-2507. |
| Gene ID | 916 |

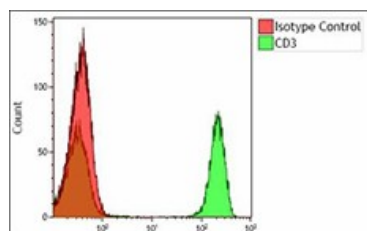
Related Protocols

[Cell Surface Flow Cytometry Staining Protocol](#)

Other Formats

Purified anti-CD3

Product Data



Human peripheral blood lymphocytes were stained with purified anti-CD3 antibody (clone BC3, green histogram) or purified mouse IgG2b, κ isotype control (orange histogram), followed by anti-mouse IgG PE.

For research use only. Not for diagnostic use. Not for resale. BioLegend will not be held responsible for patent infringement or other violations that may occur with the use of our products.

*These products may be covered by one or more Limited Use Label Licenses (see the BioLegend Catalog or our website, www.biolegend.com/ordering#license). BioLegend products may not be transferred to third parties, resold, modified for resale, or used to manufacture commercial products, reverse engineer functionally similar materials, or to provide a service to third parties without written approval of BioLegend. By use of these products you accept the terms and conditions of all applicable Limited Use Label Licenses. Unless otherwise indicated, these products are for research use only and are not intended for human or animal diagnostic, therapeutic or commercial use.

BioLegend Inc., 8999 BioLegend Way, San Diego, CA 92121 www.biolegend.com
Toll-Free Phone: 1-877-Bio-Legend (246-5343) Phone: (858) 768-5800 Fax: (877) 455-9587