

Purified anti-human Cadherin 11 Antibody

Catalog# / Size	368702 / 100 µg
Clone	16G5
Regulatory Status	RUO
Other Names	OSF-4, Osteoblast cadherin, OB-cadherin, CDH11, CDHOB, CAD11
Isotype	Mouse IgG1, κ
Description	Cadherins are calcium-dependent cell adhesion proteins. They preferentially interact with themselves in a homophilic manner in connecting cells. Cadherin 11 is a type I transmembrane glycoprotein. It is a type II (atypical) cadherin, based on its lack of a HAV cell adhesion recognition sequence that is specific to type I cadherins. The expression of this particular cadherin in osteoblastic cell lines along with its upregulation during differentiation suggests a specific function in bone development and maintenance. This cadherin is also expressed in some cancer cells.

Product Details

Verified Reactivity	Human
Antibody Type	Monoclonal
Host Species	Mouse
Immunogen	Recombinant protein containing the extracellular cadherin domain 1 of Cadherin 11 fused to maltose binding protein.
Formulation	Phosphate-buffered solution, pH 7.2, containing 0.09% sodium azide.
Preparation	The antibody was purified by affinity chromatography.
Concentration	0.5 mg/ml
Storage & Handling	The antibody solution should be stored undiluted between 2°C and 8°C.
Application	FC - Quality tested ICC, WB, IHC-P - Verified IP - Reported in the literature, not verified in house
Recommended Usage	Each lot of this antibody is quality control tested by immunofluorescent staining with flow cytometric analysis . For flow cytometric staining, the suggested use of this reagent is ≤ 1.0 µg per million cells in 100 µl volume. For Western blotting, the suggested use of this reagent is 1.0 - 2.0 µg/ml. For immunocytochemistry, a concentration range of 2.0 - 5.0 µg/ml is recommended. It is recommended that the reagent be titrated for optimal performance for each application.
Application Notes	Additional reported applications (for the relevant formats) include: immunoprecipitation.
RRID	AB_2566264 (BioLegend Cat. No. 368702)

Antigen Details

Structure	Type I single pass transmembrane glycoprotein.
Distribution	Osteoblasts, neuroblasts, and some cancer cells.
Function	Cell adhesion.
Interaction	Cadherin 2 (CDH2).
Ligand/Receptor	Calcium.

Cell Type	Osteoclasts
Biology Area	Cell Adhesion, Cell Biology, Immunology, Neuroscience, Synaptic Biology
Molecular Family	Adhesion Molecules
Antigen References	<ol style="list-style-type: none"> 1. Wheelock MJ, Johnson KR. 2003. <i>Annu. Rev. Cell Dev. Biol.</i> 19:207-35. 2. Christofori G, <i>et al.</i> 2003. <i>EMBO. J.</i> 22:2318. 3. Okazaki M, <i>et al.</i> 1994. <i>J. Biol. Chem.</i> 269:12092.
Gene ID	1009

Related Protocols

[Cell Surface Flow Cytometry Staining Protocol](#)

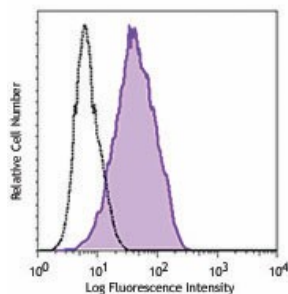
[Immunocytochemistry Staining Protocol](#)

[Western Blotting Protocol](#)

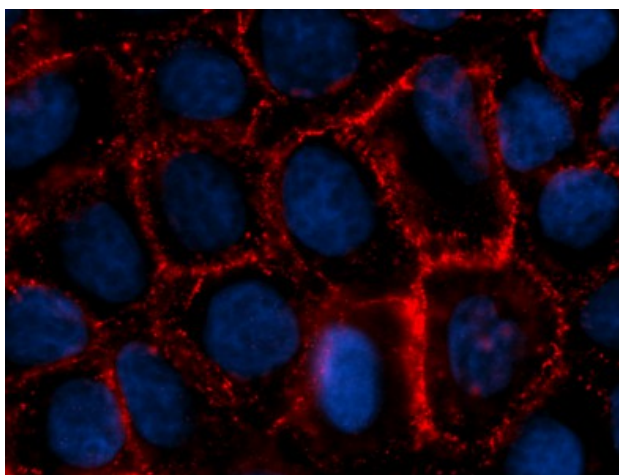
Other Formats

Purified anti-human Cadherin 11, APC anti-human Cadherin 11, PE anti-human Cadherin 11, PE/Cyanine7 anti-human Cadherin 11, Alexa Fluor® 488 anti-human Cadherin 11, Alexa Fluor® 647 anti-human Cadherin 11, TotalSeq™-C0131 anti-human Cadherin 11

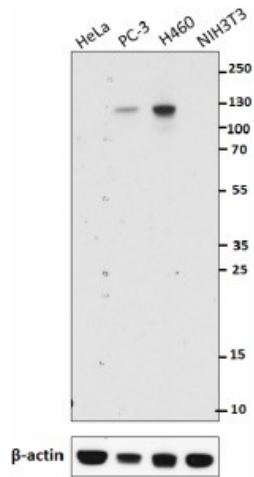
Product Data



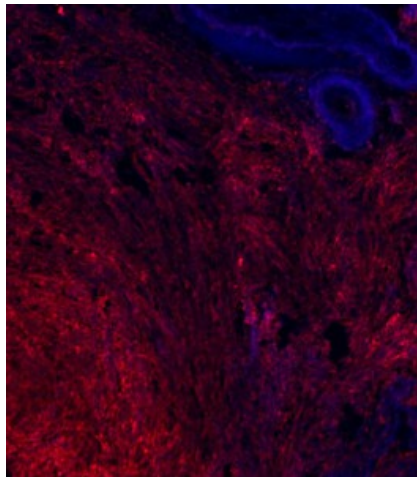
Human lung cancer cell line H460 cells were stained with purified Cadherin 11 (clone 16G5) (filled histogram) or purified mouse IgG1, κ isotype control (open histogram), followed by anti-mouse IgG PE.



Immunofluorescence analysis. H460 cells were fixed with 4% paraformaldehyde (PFA) and blocked with 5% FBS. Then the cells were stained with 5 $\mu\text{g}/\text{ml}$ anti-Cadherin 11 antibody followed by 2 $\mu\text{g}/\text{mL}$ Alexa Fluor® 594 conjugated anti-mouse IgG. Nuclei were counterstained with DAPI and are shown in blue. The image was captured with a 60X objective.



Protein (15 μ g) harvested from HeLa, PC3, H460, and NIH3T3 was resolved by electrophoresis, transferred to nitrocellulose, and probed with purified monoclonal Cadherin 11 (clone 16G5) antibody. Proteins were visualized using an HRP Goat anti-mouse IgG (minimal x-reactivity) antibody and chemiluminescence detection.



Human paraffin-embedded ovary tissue slice was stained with purified anti-human Cadherin 11 antibody overnight followed by Alexa Fluor[®] 594 goat anti-mouse secondary antibody (red). The nuclei were counterstained with DAPI (blue). The image was captured with a 10X objective.

For research use only. Not for diagnostic use. Not for resale. BioLegend will not be held responsible for patent infringement or other violations that may occur with the use of our products.

*These products may be covered by one or more Limited Use Label Licenses (see the BioLegend Catalog or our website, www.biolegend.com/ordering#license). BioLegend products may not be transferred to third parties, resold, modified for resale, or used to manufacture commercial products, reverse engineer functionally similar materials, or to provide a service to third parties without written approval of BioLegend. By use of these products you accept the terms and conditions of all applicable Limited Use Label Licenses. Unless otherwise indicated, these products are for research use only and are not intended for human or animal diagnostic, therapeutic or commercial use.

BioLegend Inc., 8999 BioLegend Way, San Diego, CA 92121 www.biolegend.com
Toll-Free Phone: 1-877-Bio-Legend (246-5343) Phone: (858) 768-5800 Fax: (877) 455-9587