

Rainbow Calibration Particles, 8 peaks (3.0-3.4 μm)

Catalog# / Size	422903 / 5 mL
Regulatory Status	RUO
Other Names	Sphero™ brand beads, 8 peak Rainbow Calibration Beads
Description	These Rainbow Calibration Particles are a mixture of 3.0 - 3.4 μm particles, dyed to eight different fluorescent intensities. As their excitation range is 365 - 650 nm, they can be used with most lasers. However, they are not for use with the UV laser. The emission spectra of these rainbow particles is compatible with many common fluorophores used in immunofluorescent staining with flow cytometric analysis.

Product Details

Formulation	Rainbow Calibration Particles are in deionized water with 0.02% sodium azide and 0.01% NP-40.
Concentration	10 ⁷ particles per ml.
Storage & Handling	Store between 2°C and 8°C. Do not freeze. Protect from light.
Application	FC
Recommended Usage	Resuspend well (e.g. vortex briefly) before adding 3-5 drops to 1 ml of filtered DI water.
Application Notes	<p>Use of Rainbow Calibration Particles, 8 peaks (3.0-3.4 μm), is common for the following purposes:</p> <ol style="list-style-type: none">1. Instrument performance verification (linearity) and monitoring2. Standardization of instrument settings for longitudinal studies (can also use Rainbow Calibration Particles, 6 peaks (Cat. No. 422901), and single-peak Rainbow Fluorescent Particles (Cat No. 422905 and 422907)3. Evaluation of new collection optics (e.g. bandpass filters) <p>The relative number of fluorophores per particles has been determined for every peak of this product in FL1 (FITC and MEFL), FL2 (RPE and MEPE), FL3 (RPECy5 and MEPCY) and FL4 (APC and MEAP) channels on a flow cytometer to plot the calibration graph, which can be used to check linearity of the PMT in each channel. PMT QC templates can be downloaded directly from Spherotech™.</p>

Application References

(PubMed link indicates BioLegend citation)

1. [Calibration and Performance Tracking of Flow Cytometers Using Sphero™ Calibration Particles](#)
2. [Measuring Molecules of Equivalent Fluorochrome \(MEF\) Using Sphero™ Rainbow and Ultra Rainbow Calibration Particles](#)
3. [Determining PMT Linearity in Flow Cytometers Using the Sphero™ PMT Quality Control Excel Template](#)
4. Perfetto SP, *et al.* 2006. *Nat. Protoc.* 1:1522.

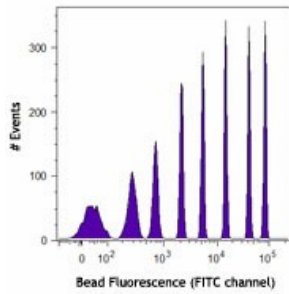
Product Citations

1. Fedorec AJH, *et al.* 2020. *ACS Synth Biol.* 2258:9. [PubMed](#)
2. Bernal C, *et al.* 2020. *Cell Rep.* 108372:33. [PubMed](#)
3. Clottu A, *et al.* 2017. *Cell Rep.* 18(1):213-224. [PubMed](#)
4. Sørensen MES, *et al.* 2020. *Curr Biol.* 328:30. [PubMed](#)

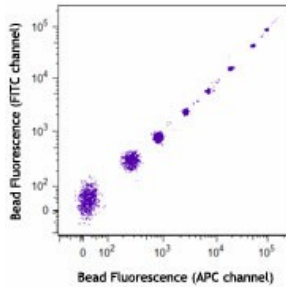
Antigen Details

Gene ID NA

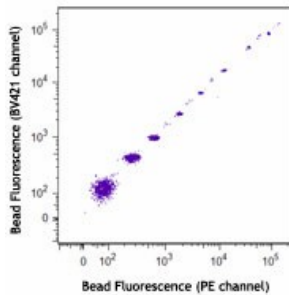
Product Data



Bead fluorescence at 488 nm excitation with a 530/30 BP filter (FITC channel).



Bead fluorescence at 561 nm excitation with a 582/15 BP filter (PE channel) plotted against bead fluorescence at 405 nm excitation with a 450/50 BP filter (BV421™ channel).



Bead fluorescence at 561 nm excitation with a 582/15 BP filter (PE channel) plotted against bead fluorescence at 405 nm excitation with a 450/50 BP filter (BV421™ channel).

For research use only. Not for diagnostic use. Not for resale. BioLegend will not be held responsible for patent infringement or other violations that may occur with the use of our products.

*These products may be covered by one or more Limited Use Label Licenses (see the BioLegend Catalog or our website, www.biolegend.com/ordering#license). BioLegend products may not be transferred to third parties, resold, modified for resale, or used to manufacture commercial products, reverse engineer functionally similar materials, or to provide a service to third parties without written approval of BioLegend. By use of these products you accept the terms and conditions of all applicable Limited Use Label Licenses. Unless otherwise indicated, these products are for research use only and are not intended for human or animal diagnostic, therapeutic or commercial use.

BioLegend Inc., 8999 BioLegend Way, San Diego, CA 92121 www.biolegend.com
 Toll-Free Phone: 1-877-Bio-Legend (246-5343) Phone: (858) 768-5800 Fax: (877) 455-9587