

## Ultra-LEAF™ Purified anti-rat CD90 Antibody

<b>Catalog# / Size</b>	206204 / 500 µg
<b>Clone</b>	13H7
<b>Regulatory Status</b>	RUO
<b>Other Names</b>	Thy-1
<b>Isotype</b>	Mouse IgG3, κ
<b>Description</b>	CD90, also known as Thy-1, is a 28-30 kD GPI-linked membrane glycoprotein. It is a member of the immunoglobulin superfamily and has been shown to interact with CD45 in signal transduction during lymphocyte proliferation and differentiation. CD90 is expressed on hematopoietic stem cells, neurons, thymocytes, peripheral T cells, fibroblasts, stromal cells.

### Product Details

---

<b>Verified Reactivity</b>	Rat
<b>Antibody Type</b>	Monoclonal
<b>Host Species</b>	Mouse
<b>Immunogen</b>	PC12 cells
<b>Formulation</b>	0.2 µm filtered in phosphate-buffered solution, pH 7.2, containing no preservative. Endotoxin level is <0.01 EU/µg of the protein (<0.001 ng/µg of the protein) as determined by the LAL test.
<b>Preparation</b>	The Ultra-LEAF™ (Low Endotoxin, Azide-Free) antibody was purified by affinity chromatography.
<b>Concentration</b>	The antibody is bottled at the concentration indicated on the vial, typically between 2 mg/mL and 3 mg/mL. Older lots may have also been bottled at 1 mg/mL. To obtain lot-specific concentration, please enter the lot number in our <a href="#">Concentration and Expiration Lookup</a> or <a href="#">Certificate of Analysis</a> online tools.
<b>Storage &amp; Handling</b>	The antibody solution should be stored undiluted between 2°C and 8°C. This Ultra-LEAF™ solution contains no preservative; handle under aseptic conditions.
<b>Application</b>	<a href="#">FC - Quality tested</a> <a href="#">IP, WB - Reported in the literature, not verified in house</a>
<b>Recommended Usage</b>	Each lot of this antibody is quality control tested by <a href="#">immunofluorescent staining with flow cytometric analysis</a> . For flow cytometric staining, the suggested use of this reagent is ≤0.5 µg per million cells in 100 µl volume or 100 µl of whole blood. It is recommended that the reagent be titrated for optimal performance for each application.
<b>Application References</b> (PubMed link indicates BioLegend citation)	1. Kuroiwa K, <i>et al.</i> 2012. <i>Hybridoma</i> 31:225.
<b>RRID</b>	AB_2616640 (BioLegend Cat. No. 206204)

### Antigen Details

---

<b>Structure</b>	Ig superfamily, GPI-anchored membrane glycoprotein.
<b>Distribution</b>	Hematopoietic stem cells, thymocytes, a subset of peripheral blood T cells, early myeloid and erythroid progenitors, immature B cells, neurons, activated endothelium, mast cells, dendritic cells, glomeruli.
<b>Function</b>	Adhesion, signal transduction, lymphocyte co-stimulation, proliferation and differentiation of hematopoietic stem cells.

<b>Ligand/Receptor</b>	Interacts with CD45.
<b>Cell Type</b>	Hematopoietic stem and progenitors, Thymocytes, T cells, Neurons, Mast cells, Dendritic cells, B cells
<b>Biology Area</b>	Immunology
<b>Molecular Family</b>	Adhesion Molecules, CD Molecules
<b>Antigen References</b>	1. Campbell DG, <i>et al.</i> 1981. <i>Biochem. J.</i> 195:15. 2. Hosseinzadeh H, <i>et al.</i> 1993. <i>J. Immunol.</i> 150:1670.
<b>Gene ID</b>	<a href="#">21838</a>

## Related Protocols

---

[Cell Surface Flow Cytometry Staining Protocol](#)

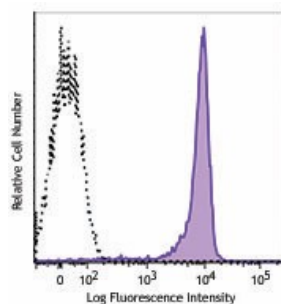
## Other Formats

---

Ultra-LEAF™ Purified anti-rat CD90

## Product Data

---



LOU rat thymocytes were stained with purified rat CD90 (clone 13H7, filled histogram) or purified mouse IgG3,  $\kappa$  isotype control (open histogram) followed by anti-mouse IgG PE.

For research use only. Not for diagnostic use. Not for resale. BioLegend will not be held responsible for patent infringement or other violations that may occur with the use of our products.

\*These products may be covered by one or more Limited Use Label Licenses (see the BioLegend Catalog or our website, [www.biolegend.com/ordering#license](http://www.biolegend.com/ordering#license)). BioLegend products may not be transferred to third parties, resold, modified for resale, or used to manufacture commercial products, reverse engineer functionally similar materials, or to provide a service to third parties without written approval of BioLegend. By use of these products you accept the terms and conditions of all applicable Limited Use Label Licenses. Unless otherwise indicated, these products are for research use only and are not intended for human or animal diagnostic, therapeutic or commercial use.

BioLegend Inc., 8999 BioLegend Way, San Diego, CA 92121 [www.biolegend.com](http://www.biolegend.com)  
Toll-Free Phone: 1-877-Bio-Legend (246-5343) Phone: (858) 768-5800 Fax: (877) 455-9587