

## Alexa Fluor® 647 anti-human CD64 Antibody

<b>Catalog# / Size</b>	305012 / 100 tests
<b>Clone</b>	10.1
<b>Regulatory Status</b>	RUO
<b>Workshop</b>	VI MA36
<b>Other Names</b>	FcγRI, FcR I
<b>Isotype</b>	Mouse IgG1, κ
<b>Description</b>	CD64 is a 72 kD single chain type I glycoprotein also known as FcγRI and FcR I. CD64 is a member of the immunoglobulin superfamily and is expressed on monocytes/macrophages, dendritic cells, and activated granulocytes. The expression can be upregulated by IFN-γ stimulation. CD64 binds IgG immune complex. It plays a role in antigen capture, phagocytosis of IgG/antigen complexes, and antibody-dependent cellular cytotoxicity (ADCC).

### Product Details

---

<b>Verified Reactivity</b>	Human, Cynomolgus, Rhesus
<b>Reported Reactivity</b>	Baboon, Capuchin Monkey, Chimpanzee, Squirrel Monkey
<b>Antibody Type</b>	Monoclonal
<b>Host Species</b>	Mouse
<b>Immunogen</b>	Human rheumatoid synovial fluid cells and fibronectin-purified monocytes.
<b>Formulation</b>	Phosphate-buffered solution, pH 7.2, containing 0.09% sodium azide and BSA (origin USA)
<b>Preparation</b>	The antibody was purified by affinity chromatography and conjugated with Alexa Fluor® 647 under optimal conditions.
<b>Concentration</b>	Lot-specific (to obtain lot-specific concentration, please enter the lot number in our <a href="#">Concentration and Expiration Lookup</a> or <a href="#">Certificate of Analysis</a> online tools.)
<b>Storage &amp; Handling</b>	The antibody solution should be stored undiluted between 2°C and 8°C, and protected from prolonged exposure to light. <b>Do not freeze.</b>
<b>Application</b>	<a href="#">FC - Quality tested</a>
<b>Recommended Usage</b>	Each lot of this antibody is quality control tested by <a href="#">immunofluorescent staining with flow cytometric analysis</a> . For flow cytometric staining, the suggested use of this reagent is 5 µl per million cells in 100 µl staining volume or 5 µl per 100 µl of whole blood.  * Alexa Fluor® 647 has a maximum emission of 668 nm when it is excited at 633nm / 635nm.  Alexa Fluor® and Pacific Blue™ are trademarks of Life Technologies Corporation.  <a href="#">View full statement regarding label licenses</a>
<b>Excitation Laser</b>	Red Laser (633 nm)
<b>Application Notes</b>	Clone 10.1 recognizes the EC3 epitope of CD64. While both contain the EC3 domain, in-house testing suggests that clone 10.1 preferentially binds to CD64A (FcγRIA), but not CD64B (FcγRIB). Additional reported applications (for the relevant formats) include: blocking of human IgG3 and murine IgG2a binding to FcγRI <sup>2,5,6,11</sup> and immunohistochemical staining of acetone-fixed frozen tissue sections <sup>12</sup> .
<b>Application References</b>	<ol style="list-style-type: none"><li>1. McMichael A, <i>et al.</i> Eds. 1987. Leucocyte Typing III. Oxford University Press. New York.</li><li>2. Schlossman S, <i>et al.</i> Eds. 1995. Leucocyte Typing V. Oxford University Press. New York. p. 874.</li><li>3. Kishimoto T, <i>et al.</i> Eds. 1997. Leucocyte Typing VI. Garland Publishing Inc. London.</li><li>4. Holl V, <i>et al.</i> 2004. <i>J. Immunol.</i> 173:6274.</li></ol>

5. Hober D, *et al.* 2002. *J. Gen. Virol.* 83:2169.
6. Cho HJ, *et al.* 2007. *Physiol Genomics* 149:60.
7. van Tits L, *et al.* 2005. *Arterioscler Thromb Vasc Biol.* 25:717. [PubMed](#)
8. Bruhns P, *et al.* 2008. *Blood* 113:3716. [PubMed](#)
9. Yoshino N, *et al.* 2000. *Exp. Anim. (Tokyo)* 49:97. (FC)
10. Carter DL, *et al.* 1999. *Cytometry* 37:41. (FC)
11. Dougherty GJ, *et al.* 1987. *Eur. J. Immunol.* 17:1453.
12. Blom AB, *et al.* 2003. *Arthritis Rheum.* 48(4):1002-14. (IHC)

#### Product Citations

1. Poel C, *et al.* 2010. *Blood.* 116:5327. [PubMed](#)
2. Khare P, *et al.* 2017. *J Autoimmun.* 10.1016/j.jaut.2017.09.002. [PubMed](#)
3. Bassil R, *et al.* 2021. *Nat Commun.* 12:5220. [PubMed](#)

#### RRID

AB\_528867 (BioLegend Cat. No. 305012)

## Antigen Details

<b>Structure</b>	Ig superfamily, type I glycoprotein, 72 kD
<b>Distribution</b>	Monocytes, macrophages, dendritic cells, activated granulocytes
<b>Function</b>	Phagocytosis, ADCC
<b>Ligand/Receptor</b>	IgG receptor
<b>Cell Type</b>	Dendritic cells, Granulocytes, Macrophages, Monocytes
<b>Biology Area</b>	Immunology, Innate Immunity
<b>Molecular Family</b>	CD Molecules, Fc Receptors
<b>Antigen References</b>	<ol style="list-style-type: none"> <li>1. Hulett M, <i>et al.</i> 1994. <i>Adv. Immunol.</i> 57:1.</li> <li>2. van de Winkel J, <i>et al.</i> 1993. <i>Immunol. Today</i> 14:215.</li> </ol>
<b>Gene ID</b>	<a href="#">2209</a>

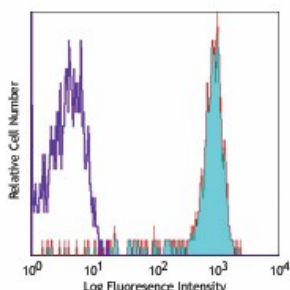
## Related Protocols

[Cell Surface Flow Cytometry Staining Protocol](#)

## Other Formats

Biotin anti-human CD64, FITC anti-human CD64, PE anti-human CD64, Purified anti-human CD64, Alexa Fluor® 488 anti-human CD64, Alexa Fluor® 647 anti-human CD64, APC anti-human CD64, Pacific Blue™ anti-human CD64, Brilliant Violet 421™ anti-human CD64, PE/Cyanine7 anti-human CD64, PerCP/Cyanine5.5 anti-human CD64, APC/Cyanine7 anti-human CD64, Brilliant Violet 510™ anti-human CD64, Purified anti-human CD64 (Maxpar® Ready), PE/Dazzle™ 594 anti-human CD64, Brilliant Violet 605™ anti-human CD64, APC/Fire™ 750 anti-human CD64, TotalSeq™-A0162 anti-human CD64, Brilliant Violet 711™ anti-human CD64, Alexa Fluor® 700 anti-human CD64, Brilliant Violet 785™ anti-human CD64, TotalSeq™-C0162 anti-human CD64, Ultra-LEAF™ Purified anti-human CD64, TotalSeq™-B0162 anti-human CD64, TotalSeq™-D0162 anti-human CD64, GMP PE anti-human CD64, GMP FITC anti-human CD64

## Product Data



Human peripheral blood monocytes stained with 10.1 Alexa Fluor® 647

For research use only. Not for diagnostic use. Not for resale. BioLegend will not be held responsible for patent infringement or other violations that may occur with the use of our products.

\*These products may be covered by one or more Limited Use Label Licenses (see the BioLegend Catalog or our website, [www.biolegend.com/ordering#license](http://www.biolegend.com/ordering#license)). BioLegend products may not be transferred to third parties, resold, modified for resale, or used to manufacture commercial products, reverse engineer functionally similar materials, or to provide a service to third parties without written approval of BioLegend. By use of these products you accept the terms and conditions of all applicable Limited Use Label Licenses. Unless otherwise indicated, these products are for research use only and are not intended for human or animal diagnostic, therapeutic or commercial use.

BioLegend Inc., 8999 BioLegend Way, San Diego, CA 92121 [www.biolegend.com](http://www.biolegend.com)  
Toll-Free Phone: 1-877-Bio-Legend (246-5343) Phone: (858) 768-5800 Fax: (877) 455-9587