

Biotin anti-human CD28 Antibody

Catalog# / Size	302903 / 25 µg 302904 / 100 µg
Clone	CD28.2
Regulatory Status	RUO
Workshop	V-CD28.05
Other Names	T44, Tp44
Isotype	Mouse IgG1, κ
Description	CD28 is a 44 kD disulfide-linked homodimeric type I glycoprotein. It is a member of the immunoglobulin superfamily and is also known as T44 or Tp44. CD28 is expressed on most T lineage cells, NK cell subsets, and plasma cells. CD28 binds both CD80 and CD86 using a highly conserved motif MYPPY in the CDR3-like loop. CD28 is considered a major co-stimulatory molecule, inducing T lymphocyte activation and IL-2 synthesis, and preventing cell death. <i>In vitro</i> studies indicate that ligation of CD28 on T cells by CD80 and CD86 on antigen presenting cells provides a costimulatory signal required for T cell activation and proliferation.

Product Details

Verified Reactivity	Human, Cynomolgus, Rhesus
Reported Reactivity	Baboon, Capuchin Monkey, Chimpanzee, Pigtailed Macaque, Sooty Mangabey, Squirrel Monkey
Antibody Type	Monoclonal
Host Species	Mouse
Formulation	Phosphate-buffered solution, pH 7.2, containing 0.09% sodium azide.
Preparation	The antibody was purified by affinity chromatography, and conjugated with biotin under optimal conditions.
Concentration	0.5 mg/ml
Storage & Handling	The antibody solution should be stored undiluted between 2°C and 8°C. Do not freeze.
Application	FC - Quality tested
Recommended Usage	Each lot of this antibody is quality control tested by immunofluorescent staining with flow cytometric analysis . For flow cytometric staining, the suggested use of this reagent is ≤ 0.5 µg per 10 ⁶ cells in 100 µl volume or 100 µl whole blood. It is recommended that the reagent be titrated for optimal performance for each application.
Application Notes	The Ultra-LEAF™ Purified antibody (Endotoxin < 0.01 EU/µg, Azide-Free, 0.2 µm filtered) is recommended for highly sensitive assays.
Application References	<ol style="list-style-type: none"> Schlossman S, <i>et al.</i> Eds. 1995. Leucocyte Typing V. Oxford University Press. New York. Nunes J, <i>et al.</i> 1993. <i>Biochem. J.</i> 293:835. Calea-Lauri J, <i>et al.</i> 1999. <i>J. Immunol.</i> 163:62. Tazi A, <i>et al.</i> 1999. <i>J. Immunol.</i> 163:3511. (IHC) Marti F, <i>et al.</i> 2001. <i>J. Immunol.</i> 166:197. (Costim) Jeong SH, <i>et al.</i> 2004. <i>J. Virol.</i> 78:6995. (Costim) Rivollier A, <i>et al.</i> 2004. <i>Blood</i> 104:4029. (Costim) Scharschmidt E, <i>et al.</i> 2004. <i>Mol. Cell Biol.</i> 24:3860. (Costim) Sheng W, <i>et al.</i> 2007. <i>Elsevier</i> 580:6819. PubMed Mitsuhashi M. 2007. <i>Clin Chem.</i> 53:148. PubMed Ye Z, <i>et al.</i> 2008. <i>Infect. Immun.</i> 76:2541. PubMed Magatti M, <i>et al.</i> 2008. <i>Stem Cells</i> 26:182. (FA) PubMed Yoshino N, <i>et al.</i> 2008. <i>Exp. Anim. (Tokyo)</i> 49:97. (FC) Berg M, <i>et al.</i> 2008. <i>J Leukoc Biol.</i> 83:853. (IP) PubMed Rout N, <i>et al.</i> 2010. <i>PLoS One</i> 5:e9787. (FC)

16. Leonard JA, *et al.* 2011. *J. Virol.* 85:6867. [PubMed](#)
17. Nomura T, *et al.* 2012. *J. Virol.* 86:6481. [PubMed](#)

Product Citations

1. Zhang DKY, *et al.* 2020. *Nature Protocols.* 15(3):773-798.. [PubMed](#)
2. Eller MA, *et al.* 2016. *J Virol.* 90: 4005-4016. [PubMed](#)
3. Serwas NK, *et al.* 2019. *Nat Commun.* 2.573611111. [PubMed](#)
4. Zheng Y, *et al.* 2021. *Nat Commun.* 12:3580. [PubMed](#)

RRID

AB_314305 (BioLegend Cat. No. 302903)
 AB_314306 (BioLegend Cat. No. 302904)

Antigen Details

Structure	Ig superfamily, type I transmembrane glycoprotein, homodimer, 44 kD
Distribution	Mature T cells, thymocytes, NK cell subsets, plasma cells, EBV-positive B cells
Function	T cell costimulation
Ligand/Receptor	CD80, CD86
Cell Type	B cells, NK cells, Plasma cells, T cells, Thymocytes, Tregs
Biology Area	Costimulatory Molecules, Immunology
Molecular Family	CD Molecules
Antigen References	<ol style="list-style-type: none"> 1. Schlossman S, <i>et al.</i> Eds. 1995. <i>Leucocyte Typing V.</i> Oxford University Press. New York. 2. June CH, <i>et al.</i> 1994. <i>Immunol. Today</i> 15:321. 3. Linskey PS, <i>et al.</i> 1993. <i>Annu. Rev. Immunol.</i> 11:191.
Gene ID	940

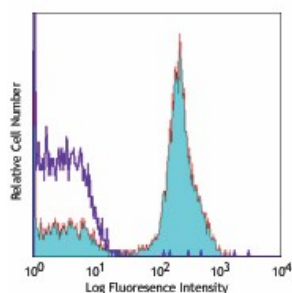
Related Protocols

[Cell Surface Flow Cytometry Staining Protocol](#)

Other Formats

APC anti-human CD28, Biotin anti-human CD28, FITC anti-human CD28, PE anti-human CD28, PE/Cyanine5 anti-human CD28, Purified anti-human CD28, Alexa Fluor® 488 anti-human CD28, Alexa Fluor® 700 anti-human CD28, PerCP/Cyanine5.5 anti-human CD28, Pacific Blue™ anti-human CD28, PE/Cyanine7 anti-human CD28, Ultra-LEAF™ Purified anti-human CD28, Brilliant Violet 421™ anti-human CD28, Brilliant Violet 510™ anti-human CD28, Purified anti-human CD28 (Maxpar® Ready), PE/Dazzle™ 594 anti-human CD28, Brilliant Violet 785™ anti-human CD28, Brilliant Violet 650™ anti-human CD28, Brilliant Violet 711™ anti-human CD28, APC/Fire™ 750 anti-human CD28, Alexa Fluor® 647 anti-human CD28, TotalSeq™-A0386 anti-human CD28, TotalSeq™-B0386 anti-human CD28, TotalSeq™-C0386 anti-human CD28, Brilliant Violet 605™ anti-human CD28, APC/Cyanine7 anti-human CD28, Brilliant Violet 750™ anti-human CD28, PE/Fire™ 810 anti-human CD28, GMP PE anti-human CD28, TotalSeq™-D0386 anti-human CD28, Spark Violet™ 423 anti-human CD28

Product Data



Human peripheral blood lymphocytes stained with biotinylated CD28.2, followed by Sav-PE

For research use only. Not for diagnostic use. Not for resale. BioLegend will not be held responsible for patent infringement or other violations that may occur with the use of our products.

*These products may be covered by one or more Limited Use Label Licenses (see the BioLegend Catalog or our website, www.biolegend.com/ordering#license). BioLegend products may not be transferred to third parties, resold, modified for resale, or used to manufacture commercial products, reverse engineer functionally similar materials, or to provide a service to third parties without written approval of BioLegend. By use of these products you accept the terms and conditions of all applicable Limited Use Label Licenses. Unless otherwise indicated, these products are for research use only and are not intended for human or animal diagnostic, therapeutic or commercial use.

BioLegend Inc., 8999 BioLegend Way, San Diego, CA 92121 www.biolegend.com
Toll-Free Phone: 1-877-Bio-Legend (246-5343) Phone: (858) 768-5800 Fax: (877) 455-9587