

Alexa Fluor® 488 anti-human CD4 Antibody

Catalog# / Size	300519 / 100 tests
Clone	RPA-T4
Regulatory Status	RUO
Workshop	IV T114
Other Names	T4
Isotype	Mouse IgG1, κ
Description	CD4, also known as T4, is a 55 kD single-chain type I transmembrane glycoprotein expressed on most thymocytes, a subset of T cells, and monocytes/macrophages. CD4, a member of the Ig superfamily, recognizes antigens associated with MHC class II molecules, and participates in cell-cell interactions, thymic differentiation, and signal transduction. CD4 acts as a primary receptor for HIV, binding to HIV gp120. CD4 has also been shown to interact with IL-16.

Product Details

Verified Reactivity	Human
Reported Reactivity	Chimpanzee
Antibody Type	Monoclonal
Host Species	Mouse
Formulation	Phosphate-buffered solution, pH 7.2, containing 0.09% sodium azide and BSA (origin USA)
Preparation	The antibody was purified by affinity chromatography and conjugated with Alexa Fluor® 488 under optimal conditions.
Concentration	Lot-specific (to obtain lot-specific concentration, please enter the lot number in our Concentration and Expiration Lookup or Certificate of Analysis online tools.)
Storage & Handling	The antibody solution should be stored undiluted between 2°C and 8°C, and protected from prolonged exposure to light. Do not freeze.
Application	FC - Quality tested ICC - Verified
Recommended Usage	Each lot of this antibody is quality control tested by immunofluorescent staining with flow cytometric analysis . For flow cytometric staining, the suggested use of this reagent is 5 µL per million cells in 100 µL staining volume or 5 µL per 100 µL of whole blood. It is recommended that the reagent be titrated for optimal performance for each application. * Alexa Fluor® 488 has a maximum emission of 519 nm when it is excited at 488 nm. Alexa Fluor® and Pacific Blue™ are trademarks of Life Technologies Corporation. View full statement regarding label licenses
Application Notes	The RPA-T4 antibody binds to the D1 domain of CD4 (CDR1 and CDR3 epitopes) and can block HIV gp120 binding and inhibit syncytia formation. Additional reported applications (for the relevant formats) include: immunohistochemistry of acetone-fixed frozen sections ^{3,4,5} , blocking of T cell activation ^{1,2} , and spatial biology (IBEX) ^{10,11} . This clone was tested in-house and does not work on formalin fixed paraffin-embedded (FFPE) tissue. The Ultra-LEAF™ purified antibody (Endotoxin < 0.01 EU/µg, Azide-Free, 0.2 µm filtered) is recommended for functional assays (Cat. No. 300569 - 300574).
Application References	1. Knapp W, <i>et al.</i> 1989. Leucocyte Typing IV. Oxford University Press. New York. (Activ) 2. Moir S, <i>et al.</i> 1999. <i>J. Virol.</i> 73:7972. (Activ) 3. Deng MC, <i>et al.</i> 1995. <i>Circulation</i> 91:1647. (IHC) 4. Friedman T, <i>et al.</i> 1999. <i>J. Immunol.</i> 162:5256. (IHC)
(PubMed link indicates BioLegend citation)	

5. Mack CL, *et al.* 2004. *Pediatr. Res.* 56:79. (IHC)
6. Lan RY, *et al.* 2006. *Hepatology* 43:729.
7. Zenaro E, *et al.* 2009. *J. Leukoc. Biol.* 86:1393. (FC) [PubMed](#)
8. Yoshino N, *et al.* 2000. *Exp. Anim. (Tokyo)* 49:97. (FC)
9. Stoeckius M, *et al.* 2017. *Nat. Methods.* 14:865. (PG)
10. Radtke AJ, *et al.* 2020. *Proc Natl Acad Sci USA.* 117:33455-33465. (SB) [PubMed](#)
11. Radtke AJ, *et al.* 2022. *Nat Protoc.* 17:378-401. (SB) [PubMed](#)

Product Citations

1. Ma KY, *et al.* 2021. *Nat Immunol.* 22:1590. [PubMed](#)
2. Emmons TR, *et al.* 2021. *Cancer Immunol Res.* 9:790. [PubMed](#)
3. Kip P, *et al.* 2021. *Nutrients.* 13:. [PubMed](#)
4. Lundtoft C, *et al.* 2017. *PLoS Pathogens.* 13(6):e1006425. [PubMed](#)
5. Pothlichet J, *et al.* 2020. *J Clin Invest.* 130:2872. [PubMed](#)

RRID

AB_389311 (BioLegend Cat. No. 300519)

Antigen Details

Structure	Ig superfamily, type I transmembrane glycoprotein, 55 kD
Distribution	T cell subset, majority of thymocytes, monocytes/macrophages
Function	MHC class II co-receptor, lymphocyte adhesion, thymic differentiation, HIV receptor
Ligand/Receptor	MHC class II molecules, HIV gp120, IL-16
Cell Type	Dendritic cells, Macrophages, Monocytes, T cells, Thymocytes, Tregs
Biology Area	Immunology
Molecular Family	CD Molecules
Antigen References	<ol style="list-style-type: none"> 1. Center D, <i>et al.</i> 1996. <i>Immunol. Today</i> 17:476. 2. Gaubin M, <i>et al.</i> 1996. <i>Eur. J. Clin. Chem. Clin. Biochem.</i> 34:723.
Gene ID	920

Related Protocols

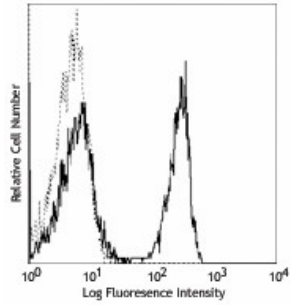
[Cell Surface Flow Cytometry Staining Protocol](#)

[Immunocytochemistry Staining Protocol](#)

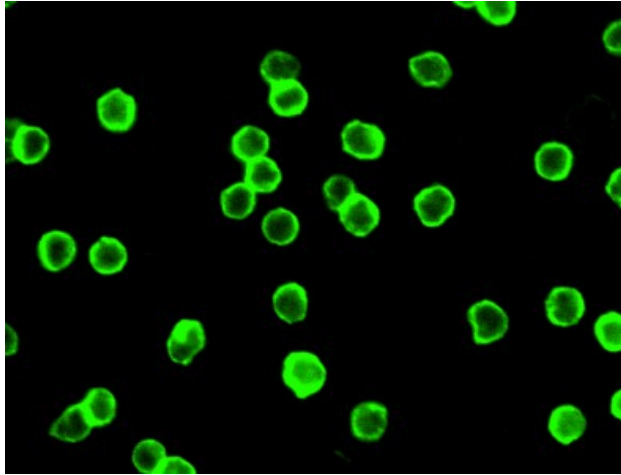
Other Formats

APC anti-human CD4, Biotin anti-human CD4, FITC anti-human CD4, PE anti-human CD4, PE/Cyanine5 anti-human CD4, PE/Cyanine7 anti-human CD4, Purified anti-human CD4, APC/Cyanine7 anti-human CD4, Alexa Fluor® 488 anti-human CD4, Alexa Fluor® 647 anti-human CD4, Pacific Blue™ anti-human CD4, Brilliant Violet 421™ anti-human CD4, Alexa Fluor® 700 anti-human CD4, PerCP anti-human CD4, PerCP/Cyanine5.5 anti-human CD4, Brilliant Violet 570™ anti-human CD4, Brilliant Violet 650™ anti-human CD4, Purified anti-human CD4 (Maxpar® Ready), Alexa Fluor® 594 anti-human CD4, Brilliant Violet 510™ anti-human CD4, PE/Dazzle™ 594 anti-human CD4, Brilliant Violet 785™ anti-human CD4, Brilliant Violet 605™ anti-human CD4, Brilliant Violet 711™ anti-human CD4, APC/Fire™ 750 anti-human CD4, CD4 Fluorophore Sampler Kit, CD4 Fluorophore Sampler Kit with Veri-Cells™ PBMC, TotalSeq™-A0072 anti-human CD4, TotalSeq™-B0072 anti-human CD4, TotalSeq™-C0072 anti-human CD4, Ultra-LEAF™ Purified anti-human CD4, TotalSeq™-D0072 anti-human CD4

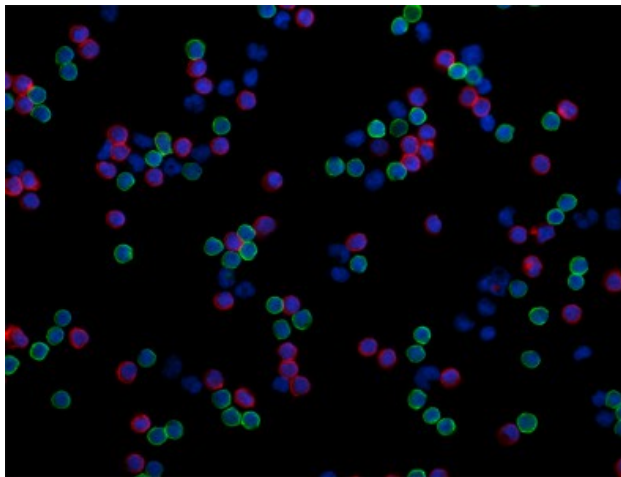
Product Data



Human peripheral blood lymphocytes stained with RPA-T4 Alexa Fluor® 488



Human peripheral blood mononuclear cells were fixed with 1% paraformaldehyde (PFA), and then stained with 5 µg/mL of CD4 (clone RPA-T4) Alexa Fluor® 488 for 30 minutes at room temperature. The image was captured by 40X objective.



Human peripheral blood mononuclear cells were fixed with 2% paraformaldehyde, then stained with 5 µg/mL anti-human CD8 (clone RPA-T8) Alexa Fluor® 594 (red) and 5 µg/mL anti-human CD4 (clone RPA-T4) Alexa Fluor® 488 (green) for 30 minutes at room temperature. Nuclei were counterstained with DAPI (blue). The image was captured by 40X objective.

For research use only. Not for diagnostic use. Not for resale. BioLegend will not be held responsible for patent infringement or other violations that may occur with the use of our products.

*These products may be covered by one or more Limited Use Label Licenses (see the BioLegend Catalog or our website, www.biolegend.com/ordering#license). BioLegend products may not be transferred to third parties, resold, modified for resale, or used to manufacture commercial products, reverse engineer functionally similar materials, or to provide a service to third parties without written approval of BioLegend. By use of these products you accept the terms and conditions of all applicable Limited Use Label Licenses. Unless otherwise indicated, these products are for research use only and are not intended for human or animal diagnostic, therapeutic or commercial use.

8999 BioLegend Way, San Diego, CA 92121 www.biolegend.com
Toll-Free Phone: 1-877-Bio-Legend (246-5343) Phone: (858) 768-5800 Fax: (877) 455-9587