

Alexa Fluor® 647 anti-human CD196 (CCR6) Antibody

Catalog# / Size	353403 / 25 tests 353404 / 100 tests
Clone	G034E3
Regulatory Status	RUO
Other Names	BN-1, CKR6, DCR2, CKRL3, DRY-6, GPR29, CKR-L3, CMKBR6, GPRCY4, STRL22, GPR-CY4
Isotype	Mouse IgG2b, κ
Description	CCR6, also known as CD196, is a chemokine receptor that is expressed on immature dendritic cells, B lymphocytes, and memory T cells. CCR6 binds CCL20, although members of the β defensin family also bind CCR6 with a lower affinity. CCR6 positive cells, and its ligand CCL20, have been detected in numerous organs, especially the secondary lymphoid organ. CCL20 is selectively made by the follicle-associated epithelium (FAE) overlying Peyer's Patches (PPs) and isolated lymphoid follicles (ILFs). CCL20 contributes to the recruitment of CCR6-expressing B cells to these structures. In humans, CCR6 can function to mediate arrest of T cells on dermal endothelial cells and is highly expressed on T cells resident in both normal and psoriatic skin. CCR6 and/or CCL20 have been implicated in the pathogenesis of rheumatoid arthritis and inflammatory bowel disease. Human T cells that are able to produce IL-17 express CCR6. It suggests that CCL20 and CCR6 have a role in inflammatory diseases by recruiting Th17 cells to target tissues.

Product Details

Verified Reactivity	Human, Cynomolgus, Rhesus
Reported Reactivity	African Green, Baboon
Antibody Type	Monoclonal
Host Species	Mouse
Immunogen	CCR6-transfected cells
Formulation	Phosphate-buffered solution, pH 7.2, containing 0.09% sodium azide and BSA (origin USA)
Preparation	The antibody was purified by affinity chromatography and conjugated with Alexa Fluor® 647 under optimal conditions.
Concentration	Lot-specific (to obtain lot-specific concentration, please enter the lot number in our Concentration and Expiration Lookup or Certificate of Analysis online tools.)
Storage & Handling	The antibody solution should be stored undiluted between 2°C and 8°C, and protected from prolonged exposure to light. Do not freeze.
Application	FC - Quality tested
Recommended Usage	Each lot of this antibody is quality control tested by immunofluorescent staining with flow cytometric analysis . For flow cytometric staining, the suggested use of this reagent is 5 μ l per million cells in 100 μ l staining volume or 5 μ l per 100 μ l of whole blood. * Alexa Fluor® 647 has a maximum emission of 668 nm when it is excited at 633 nm / 635 nm. Alexa Fluor® and Pacific Blue™ are trademarks of Life Technologies Corporation. View full statement regarding label licenses
Excitation Laser	Red Laser (633 nm)
Product Citations	1. O'Connor MH, <i>et al.</i> 2021. Commun Biol. 4:563. PubMed
RRID	AB_10918982 (BioLegend Cat. No. 353403) AB_10915558 (BioLegend Cat. No. 353404)

Antigen Details

Structure	Chemokine receptor, GPCR, seven transmembrane receptor
Distribution	Immature dendritic cells, B lymphocytes, memory T cells, Th17 cells
Function	Host defense, important for recruitment of B cells to secondary lymphoid organs, mediates arrest of T cells on dermal endothelial cells
Ligand/Receptor	CCL20 (MIP-3 α)
Cell Type	B cells, Dendritic cells, T cells, Th17
Biology Area	Immunology
Molecular Family	CD Molecules, Cytokine/Chemokine Receptors, GPCR
Antigen References	<ol style="list-style-type: none">1. Zaballos A, <i>et al.</i> 1996. <i>Biochem. Bioph. Res. Co.</i> 227:846.2. Yang D, <i>et al.</i> 1999. <i>Science</i> 286:525.3. MacDonald KG, <i>et al.</i> 2007. <i>Am. J. Pathol.</i> 170:1229.4. Homey B, <i>et al.</i> 2000. <i>J. Immunol.</i> 164:6621.5. Hirota K, <i>et al.</i> 2007. <i>J. Exp. Med.</i> 204:2803.6. Singh SP, <i>et al.</i> 2008. <i>J. Immunol.</i> 180:214.
Gene ID	1235

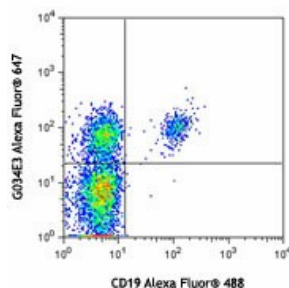
Related Protocols

[Cell Surface Flow Cytometry Staining Protocol](#)

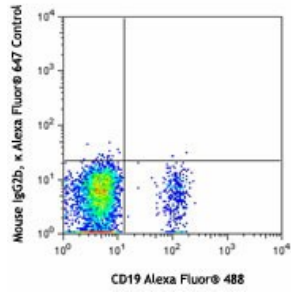
Other Formats

Purified anti-human CD196 (CCR6), Alexa Fluor® 647 anti-human CD196 (CCR6), Brilliant Violet 421™ anti-human CD196 (CCR6), PerCP/Cyanine5.5 anti-human CD196 (CCR6), PE anti-human CD196 (CCR6), FITC anti-human CD196 (CCR6), Alexa Fluor® 488 anti-human CD196 (CCR6), APC anti-human CD196 (CCR6), PE/Cyanine7 anti-human CD196 (CCR6), Brilliant Violet 605™ anti-human CD196 (CCR6), Brilliant Violet 785™ anti-human CD196 (CCR6), Brilliant Violet 510™ anti-human CD196 (CCR6), Brilliant Violet 650™ anti-human CD196 (CCR6), Purified anti-human CD196 (CCR6) (Maxpar® Ready), PE/Dazzle™ 594 anti-human CD196 (CCR6), APC/Cyanine7 anti-human CD196 (CCR6), Alexa Fluor® 700 anti-human CD196 (CCR6), Brilliant Violet 711™ anti-human CD196 (CCR6), TotalSeq™-A0143 anti-human CD196 (CCR6), Pacific Blue™ anti-human CD196 (CCR6), TotalSeq™-C0143 anti-human CD196 (CCR6), APC/Fire™ 750 anti-human CD196 (CCR6), TotalSeq™-B0143 anti-human CD196 (CCR6), TotalSeq™-D0143 anti-human CD196 (CCR6), PE/Fire™ 640 anti-human CD196 (CCR6)

Product Data



Human peripheral lymphocytes were stained with CD19 Alexa Fluor® 488 and CCR6 (clone G034E3) Alexa Fluor® 647 (top) or mouse IgG2b, κ Alexa Fluor® 647 isotype control (bottom).



For research use only. Not for diagnostic use. Not for resale. BioLegend will not be held responsible for patent infringement or other violations that may occur with the use of our products.

*These products may be covered by one or more Limited Use Label Licenses (see the BioLegend Catalog or our website, www.biolegend.com/ordering#license). BioLegend products may not be transferred to third parties, resold, modified for resale, or used to manufacture commercial products, reverse engineer functionally similar materials, or to provide a service to third parties without written approval of BioLegend. By use of these products you accept the terms and conditions of all applicable Limited Use Label Licenses. Unless otherwise indicated, these products are for research use only and are not intended for human or animal diagnostic, therapeutic or commercial use.

8999 BioLegend Way, San Diego, CA 92121 www.biolegend.com
Toll-Free Phone: 1-877-Bio-Legend (246-5343) Phone: (858) 768-5800 Fax: (877) 455-9587