

Alexa Fluor[®] 647 anti-rat CD326 (Ep-CAM) Antibody

Catalog# / Size	251005 / 25 µg 251006 / 100 µg
Clone	10D6
Regulatory Status	RUO
Other Names	CD326, EGP40, MIC18, TROP1, KSA
Isotype	Mouse IgG1, κ
Description	Ep-CAM (CD326) mediates calcium-independent homophilic cell to cell adhesion. It may also function as a growth factor receptor. It is thought to be involved in maintaining cells in position during proliferation. Expression of Ep-CAM seems to correlate inversely with the level of E-cadherin (CD324). Ep-CAM is considered important in tumor biology.

Product Details

Verified Reactivity	Rat
Antibody Type	Monoclonal
Host Species	Mouse
Formulation	Phosphate-buffered solution, pH 7.2, containing 0.09% sodium azide
Preparation	The antibody was purified by affinity chromatography and conjugated with Alexa Fluor [®] 647 under optimal conditions.
Concentration	0.5 mg/mL
Storage & Handling	The antibody solution should be stored undiluted between 2°C and 8°C, and protected from prolonged exposure to light. Do not freeze.
Application	IHC-F - Quality tested
Recommended Usage	<p>Each lot of this antibody is quality control tested by immunohistochemical staining on frozen tissue sections. For immunohistochemistry on frozen tissue sections, a concentration range of 5.0 - 10.0 µg/mL is suggested. It is recommended that the reagent be titrated for optimal performance for each application.</p> <p>* Alexa Fluor[®] 647 has a maximum emission of 668 nm when it is excited at 633 nm / 635 nm.</p> <p>Alexa Fluor[®] and Pacific Blue™ are trademarks of Life Technologies Corporation.</p> <p>View full statement regarding label licenses</p>
Excitation Laser	Red Laser (633 nm)
RRID	AB_2904313 (BioLegend Cat. No. 251005) AB_2904313 (BioLegend Cat. No. 251006)

Antigen Details

Function	Mediates calcium-independent homophilic cell-cell adhesion
Interaction	CD326 displays hemophilic binding.
Ligand/Receptor	CD305 (LAIR-1), CD306 (LAIR-2), and Ep-CAM
Cell Type	Embryonic Stem Cells, Epithelial cells
Biology Area	Immunology, Stem Cells

Molecular Family Adhesion Molecules, CD Molecules

Gene ID [171577](#)

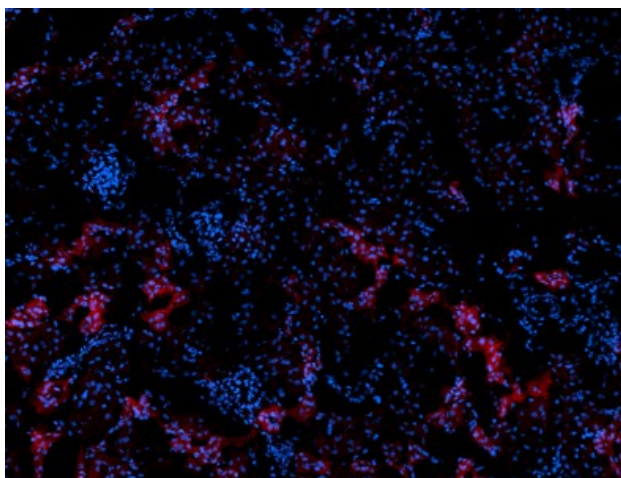
Related Protocols

[Immunohistochemistry Protocol for Frozen Sections](#)

Other Formats

Purified anti-rat CD326 (Ep-CAM), Alexa Fluor® 594 anti-rat CD326 (Ep-CAM), Alexa Fluor® 647 anti-rat CD326 (Ep-CAM)

Product Data



Frozen rat kidney section was fixed with 4% paraformaldehyde (PFA) for 10 minutes at room temperature and blocked with 5% FBS for 1 hour at room temperature. Then the section was stained with 5 µg/mL of Alexa Fluor® 647 anti-rat CD326 (Ep-CAM) (clone 10D6, red) overnight at 4°C. Nuclei were counter stained with DAPI. The image was captured by 10X objective.

For research use only. Not for diagnostic use. Not for resale. BioLegend will not be held responsible for patent infringement or other violations that may occur with the use of our products.

*These products may be covered by one or more Limited Use Label Licenses (see the BioLegend Catalog or our website, www.biolegend.com/ordering#license). BioLegend products may not be transferred to third parties, resold, modified for resale, or used to manufacture commercial products, reverse engineer functionally similar materials, or to provide a service to third parties without written approval of BioLegend. By use of these products you accept the terms and conditions of all applicable Limited Use Label Licenses. Unless otherwise indicated, these products are for research use only and are not intended for human or animal diagnostic, therapeutic or commercial use.

8999 BioLegend Way, San Diego, CA 92121 www.biolegend.com
Toll-Free Phone: 1-877-Bio-Legend (246-5343) Phone: (858) 768-5800 Fax: (877) 455-9587