

APC anti-human CD335 (NKp46) Antibody

Catalog# / Size	331917 / 25 tests 331918 / 100 tests
Clone	9E2
Regulatory Status	RUO
Other Names	NKp46, NCR1
Isotype	Mouse IgG1, κ
Description	CD335, also known as NKp46, is a member of the natural cytotoxicity receptor (NCR) family which triggers cytotoxicity in NK cells. CD335 is directly involved in target cell recognition and lysis, and is exclusively expressed on CD3 ⁻ CD56 ⁺ NK cells, suggesting it is a universal marker for NK cells. NKp46, along with NKp30 and NKp44, is referred to as a natural cytotoxicity receptor (NCR) and plays a very important role in killing virus-infected tumor cells and MHC-class I-unprotected cells.

Product Details

Verified Reactivity	Human
Antibody Type	Monoclonal
Host Species	Mouse
Immunogen	NKp46-Fc fusion protein
Formulation	Phosphate-buffered solution, pH 7.2, containing 0.09% sodium azide and BSA (origin USA)
Preparation	The antibody was purified by affinity chromatography and conjugated with APC under optimal conditions.
Concentration	Lot-specific (to obtain lot-specific concentration, please enter the lot number in our Concentration and Expiration Lookup or Certificate of Analysis online tools.)
Storage & Handling	The antibody solution should be stored undiluted between 2°C and 8°C, and protected from prolonged exposure to light. Do not freeze.
Application	FC - Quality tested
Recommended Usage	Each lot of this antibody is quality control tested by immunofluorescent staining with flow cytometric analysis . For flow cytometric staining, the suggested use of this reagent is 5 μ l per million cells in 100 μ l staining volume or 5 μ l per 100 μ l of whole blood.
Excitation Laser	Red Laser (633 nm)
Application Notes	Clone 9E2 has been shown to block NK activation through NKp46. ⁶
Application References (PubMed link indicates BioLegend citation)	<ol style="list-style-type: none"> 1. Nakajima H, <i>et al.</i> 2000. <i>Eur. J. Immunol.</i> 30:3309. 2. Kalberer CP, <i>et al.</i> 2003. <i>Blood</i> 102:127. 3. Chen Y, <i>et al.</i> 2007. <i>J. Immunol.</i> 179:2766. 4. Jarahian M, <i>et al.</i> 2009. <i>J. Virol.</i> 83:8108. PubMed 5. Correia DV, <i>et al.</i> 2011. <i>Blood</i> 118:992. (FC) PubMed 6. Achdout H. <i>et al.</i> 2010. <i>J. Virol.</i> 84:3993.
Product Citations	<ol style="list-style-type: none"> 1. Schmitz T, <i>et al.</i> 2021. <i>J Reprod Immunol.</i> 148:103424. PubMed 2. Beatson RE, <i>et al.</i> 2021. <i>Cell Rep Med.</i> 2:100473. PubMed 3. Memmer S, <i>et al.</i> 2016. <i>J Biol Chem.</i> 291(49):25427-25438. PubMed 4. Shemesh A, <i>et al.</i> 2022. <i>J Exp Med.</i> 219:.. PubMed 5. Taouk G, <i>et al.</i> 2019. <i>Sci Rep.</i> 9:8756. PubMed
RRID	AB_2561649 (BioLegend Cat. No. 331917) AB_2561650 (BioLegend Cat. No. 331918)

Antigen Details

Structure	Type I membrane glycoprotein (46 kD)
Distribution	Expressed on resting and activated NK cells
Cell Type	NK cells
Biology Area	Immunology, Innate Immunity
Molecular Family	CD Molecules
Antigen References	1. Mandelboim O and Porgador A. 2001. <i>Int. J. Biochem. Cell Biol.</i> 33:1147. 2. Nakajima H, et al. 2000. <i>Eur. J. Immunol.</i> 30:3309. 3. Sivori S. 1999. <i>Eur. J. Immunol.</i> 29:1656.
Gene ID	9437

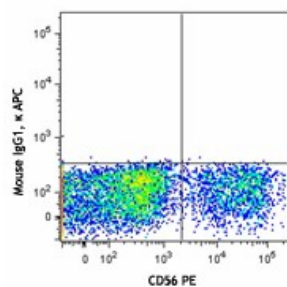
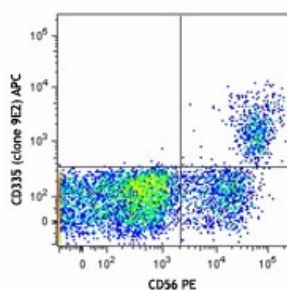
Related Protocols

[Cell Surface Flow Cytometry Staining Protocol](#)

Other Formats

Purified anti-human CD335 (NKp46), Biotin anti-human CD335 (NKp46), PE anti-human CD335 (NKp46), Alexa Fluor® 647 anti-human CD335 (NKp46), Pacific Blue™ anti-human CD335 (NKp46), Brilliant Violet 421™ anti-human CD335 (NKp46), PerCP/Cyanine5.5 anti-human CD335 (NKp46), APC anti-human CD335 (NKp46), PE/Cyanine7 anti-human CD335 (NKp46), FITC anti-human CD335 (NKp46), Brilliant Violet 510™ anti-human CD335 (NKp46), Brilliant Violet 605™ anti-human CD335 (NKp46), Brilliant Violet 650™ anti-human CD335 (NKp46), PE/Dazzle™ 594 anti-human CD335 (NKp46), Alexa Fluor® 700 anti-human CD335 (NKp46), Brilliant Violet 711™ anti-human CD335 (NKp46), APC/Fire™ 750 anti-human CD335 (NKp46), Alexa Fluor® 488 anti-human CD335 (NKp46), TotalSeq™-B0101 anti-human CD335 (NKp46), TotalSeq™-C0101 anti-human CD335 (NKp46), TotalSeq™-A0101 anti-human CD335 (NKp46), Brilliant Violet 785™ anti-human CD335 (NKp46), Ultra-LEAF™ Purified anti-human CD335 (NKp46), APC/Cyanine7 anti-human CD335 (NKp46) Antibody, PE/Cyanine5 anti-human CD335 (NKp46), PE/Fire™ 810 anti-human CD335 (NKp46)

Product Data



Human peripheral blood lymphocytes were stained with CD56 PE and CD335 (clone 9E2) APC (top) or mouse IgG1, κ APC isotype control (bottom).

For research use only. Not for diagnostic use. Not for resale. BioLegend will not be held responsible for patent infringement or other violations that may occur with the use of our products.

*These products may be covered by one or more Limited Use Label Licenses (see the BioLegend Catalog or our website, www.biolegend.com/ordering#license). BioLegend products may not be transferred to third parties, resold, modified for resale, or used to manufacture commercial products, reverse engineer functionally similar materials, or to provide a service to third parties without written approval of BioLegend. By use of these products you accept the terms and conditions of all applicable Limited Use Label Licenses. Unless otherwise indicated, these products are for research use only and are not intended for human or animal diagnostic, therapeutic or commercial use.

8999 BioLegend Way, San Diego, CA 92121 www.biolegend.com
Toll-Free Phone: 1-877-Bio-Legend (246-5343) Phone: (858) 768-5800 Fax: (877) 455-9587