

APC anti-human Notch 1 Antibody

Catalog# / Size	352107 / 25 tests 352108 / 100 tests
Clone	MHN1-519
Regulatory Status	RUO
Other Names	Neurogenic locus notch homolog protein 1 (Notch 1), Translocation-associated notch protein (TAN-1), Motch A, mT14, p300
Isotype	Mouse IgG1, κ
Description	Notch 1, also known as TAN-1, is a transmembrane protein. Its extracellular domain contains 29 epidermal growth factor-like (EGF) repeats and 3 Lin/Notch Glp (LNR) repeats, the intracellular domain contains 5 CDC10/Ankryn repeats (ANK), 1 proline, glutamate, serine, threonine-rich (PEST) motif, and 1 regulation of amino acid metabolism 23 (RAM23) domain. Notch 1 regulates the development, differentiation, and survival of a broad spectrum of cell lineages. It is involved in myogenesis, neurogenesis, gliogenesis, and lymphocyte development, resulting in Notch 1 expression in many organs such as brain, lung, thymus, spleen, bone marrow, spinal cord, eyes, mammary gland, liver, intestine, kidney, and heart. Notch 1 ligands are Jagged 1, Jagged 2, Delta 1, and Delta 4. Upon ligand binding, the intracellular domain of Notch 1 is cleaved and translocates to the cell nucleus where it forms a transcriptional activator complex with RBP-J κ.

Product Details

Verified Reactivity	Human
Antibody Type	Monoclonal
Host Species	Mouse
Immunogen	Recombinant human Notch1-Fc fusion protein
Formulation	Phosphate-buffered solution, pH 7.2, containing 0.09% sodium azide and BSA (origin USA)
Preparation	The antibody was purified by affinity chromatography and conjugated with APC under optimal conditions.
Concentration	Lot-specific (to obtain lot-specific concentration, please enter the lot number in our Concentration and Expiration Lookup or Certificate of Analysis online tools.)
Storage & Handling	The antibody solution should be stored undiluted between 2°C and 8°C, and protected from prolonged exposure to light. Do not freeze.
Application	FC - Quality tested
Recommended Usage	Each lot of this antibody is quality control tested by immunofluorescent staining with flow cytometric analysis . For flow cytometric staining, the suggested use of this reagent is 5 µl per million cells in 100 µl staining volume or 5 µl per 100 µl of whole blood.
Excitation Laser	Red Laser (633 nm)
Application Notes	Additional reported applications (for the relevant formats) include: blocking Notch 1 mediated binding to DLL4 in human cord blood CD34 ⁺ cells ¹ .
Application References	1. Haraguchi K, <i>et al.</i> 2009. <i>J. Immunol.</i> 182:6168. (Block) 2. Yamanda S, <i>et al.</i> 2009. <i>Blood</i> 113:3631. (FC) 3. Guy CS. <i>et al.</i> 2013. <i>Nat Immunol.</i> 14:262. PubMed
(PubMed link indicates BioLegend citation)	
Product Citations	1. Maluski M, <i>et al.</i> 2019. <i>J Clin Invest.</i> 129:5108. PubMed 2. Eikmans M, <i>et al.</i> 2022. <i>Front Immunol.</i> 13:814019. PubMed 3. Sagebiel AF, <i>et al.</i> 2019. <i>Nat Commun.</i> 10:975. PubMed

RRID AB_10897100 (BioLegend Cat. No. 352107)
AB_10900063 (BioLegend Cat. No. 352108)

Antigen Details

Structure	Transmembrane protein. The extracellular domain contains 29 EGF repeats and 3 LNR repeats. The intracellular domain contains 5 CDC10/ANK, 1 PEST motif, and 1 RAM23 domain.
Distribution	Highly expressed in the brain, lung, and thymus. Lower levels of expression in spleen, bone marrow, spinal cord, eyes, mammary gland, liver, intestine, kidney, and heart.
Function	Regulates development, differentiation, and survival of a broad spectrum of cell lineages. Involved in myogenesis, neurogenesis, gliogenesis, and lymphocyte development.
Interaction	RBP-J κ .
Ligand/Receptor	Jagged 1, Jagged 2, Delta 1, Delta 4.
Cell Type	B cells, Neural Stem Cells, Thymocytes
Biology Area	Cell Biology, Immunology, Innate Immunity, Neuroscience, Neuroscience Cell Markers, Stem Cells, Synaptic Biology
Molecular Family	Postsynaptic proteins
Antigen References	1. Vicente R, <i>et al.</i> 2010. <i>Semin. Immunol.</i> 22:270. 2. Zhao WL. 2010. <i>Leukemia</i> 24:13. 3. Sanda T, <i>et al.</i> 2010. <i>Blood</i> 115:1735. 4. Zhou J, <i>et al.</i> 2009. <i>Immunity</i> 31:356.
Gene ID	4851

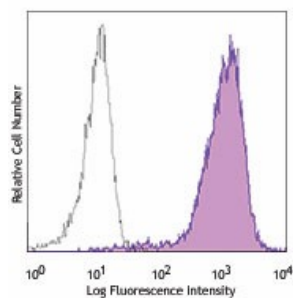
Related Protocols

[Cell Surface Flow Cytometry Staining Protocol](#)

Other Formats

Purified anti-human Notch 1, PE anti-human Notch 1, APC anti-human Notch 1, TotalSeq™-A0213 anti-human Notch 1, Ultra-LEAF™ Purified anti-human Notch 1, TotalSeq™-C0213 anti-human Notch 1, TotalSeq™-B0213 anti-human Notch 1

Product Data



Human Notch 1 transfected CHO cells were stained with Notch 1 (clone MHN1-519) APC (filled histogram) or mouse IgG1, κ APC isotype control (open histogram).

For research use only. Not for diagnostic use. Not for resale. BioLegend will not be held responsible for patent infringement or other violations that may occur with the use of our products.

*These products may be covered by one or more Limited Use Label Licenses (see the BioLegend Catalog or our website, www.biolegend.com/ordering#license). BioLegend products may not be transferred to third parties, resold, modified for resale, or used to manufacture commercial products, reverse engineer functionally similar materials, or to provide a service to third parties without written approval of BioLegend. By use of these products you accept the terms and conditions of all applicable Limited Use Label Licenses. Unless otherwise indicated, these products are for research use only and are not intended for human or animal diagnostic,

therapeutic or commercial use.

8999 BioLegend Way, San Diego, CA 92121 www.biolegend.com
Toll-Free Phone: 1-877-Bio-Legend (246-5343) Phone: (858) 768-5800 Fax: (877) 455-9587