

## FITC anti-human HLA-DR Antibody

<b>Catalog# / Size</b>	327005 / 25 tests 327006 / 100 tests
<b>Clone</b>	LN3
<b>Regulatory Status</b>	RUO
<b>Other Names</b>	Major Histocompatibility Class II, MHC class II
<b>Isotype</b>	Mouse IgG2b, κ
<b>Description</b>	The LN3 monoclonal antibody reacts with the HLA-DR antigen, a member of MHC class II molecules. HLA-DR is a heterodimeric cell surface glycoprotein comprised of a 36 kD α (heavy) chain and a 27 kD β (light) chain. It is expressed on B cells, activated T cells, monocytes/macrophages, dendritic cells and other non-professional APCs. In conjunction with the CD3/TCR complex and CD4 molecules, HLA-DR is critical for efficient peptide presentation to CD4 <sup>+</sup> T cells.

### Product Details

<b>Verified Reactivity</b>	Human
<b>Reported Reactivity</b>	Rhesus
<b>Antibody Type</b>	Monoclonal
<b>Host Species</b>	Mouse
<b>Immunogen</b>	human PBL
<b>Formulation</b>	Phosphate-buffered solution, pH 7.2, containing 0.09% sodium azide and BSA (origin USA)
<b>Preparation</b>	The antibody was purified by affinity chromatography, and conjugated with FITC under optimal conditions.
<b>Concentration</b>	Lot-specific (to obtain lot-specific concentration, please enter the lot number in our <a href="#">Concentration and Expiration Lookup</a> or <a href="#">Certificate of Analysis</a> online tools.)
<b>Storage &amp; Handling</b>	The antibody solution should be stored undiluted between 2°C and 8°C, and protected from prolonged exposure to light. <b>Do not freeze.</b>
<b>Application</b>	<a href="#">FC - Quality tested</a>
<b>Recommended Usage</b>	Each lot of this antibody is quality control tested by <a href="#">immunofluorescent staining with flow cytometric analysis</a> . For flow cytometric staining, the suggested use of this reagent is 5 µl per million cells in 100 µl staining volume or 5 µl per 100 µl of whole blood.
<b>Excitation Laser</b>	Blue Laser (488 nm)
<b>Application Notes</b>	Additional reported applications (for the relevant formats) include: immunohistochemical staining <sup>1</sup> of frozen sections and formalin-fixed paraffin-embedded sections <sup>1</sup> , and immunoprecipitation <sup>1</sup> .
<b>Application References</b> (PubMed link indicates BioLegend citation)	<ol style="list-style-type: none"> <li>1. Marder RJ, <i>et al.</i> 1985. <i>Lab. Invest.</i> 52:497.</li> <li>2. Norton AJ and Isaacson PG. 1987. <i>Am. J. Pathol.</i> 128:225.</li> <li>3. Hua ZX, <i>et al.</i> 1998. <i>Hum. Pathol.</i> 29(12):1441.</li> </ol>
<b>Product Citations</b>	<ol style="list-style-type: none"> <li>1. Sefik E, <i>et al.</i> 2021. <i>Nat Biotechnol.</i> . <a href="#">PubMed</a></li> <li>2. Kurilin V, <i>et al.</i> 2022. <i>Mol Clin Oncol.</i> 17:155. <a href="#">PubMed</a></li> <li>3. Gamradt S, <i>et al.</i> 2021. <i>iScience.</i> 24:103312. <a href="#">PubMed</a></li> </ol>
<b>RRID</b>	AB_893577 (BioLegend Cat. No. 327005) AB_893569 (BioLegend Cat. No. 327006)

## Antigen Details

---

<b>Structure</b>	Ig superfamily, MHC class II, heterodimeric transmembrane protein
<b>Distribution</b>	B cells, activated T cells, monocytes/macrophages, dendritic cells, other APCs
<b>Function</b>	Peptide presentation
<b>Ligand/Receptor</b>	CD3/TCR, CD4
<b>Cell Type</b>	Antigen-presenting cells, B cells, Dendritic cells, Macrophages, Monocytes, T cells, Tregs
<b>Biology Area</b>	Immunology, Innate Immunity
<b>Molecular Family</b>	MHC Antigens
<b>Antigen References</b>	<ol style="list-style-type: none"><li>1. Levacher M, <i>et al.</i> 1990. <i>Clin. Exp. Immunol.</i> 81:177.</li><li>2. Terstappen L, <i>et al.</i> 1990. <i>J. Leuk. Biol.</i> 48:138.</li><li>3. Edwards J, <i>et al.</i> 1985. <i>J. Immunol.</i> 137:490.</li><li>4. van Es A, <i>et al.</i> 1984. <i>Transplantation</i> 37:65.</li><li>5. O'Doherty U, <i>et al.</i> 1994. <i>Immunology</i> 82:487.</li><li>6. Thomas R, <i>et al.</i> 1994. <i>J. Immunol.</i> 153:4016.</li><li>7. Grouard G, <i>et al.</i> 1996. <i>Nature</i> 384:364.</li></ol>
<b>Gene ID</b>	<a href="#">3122</a> <a href="#">3123</a>

## Related Protocols

---

[Cell Surface Flow Cytometry Staining Protocol](#)

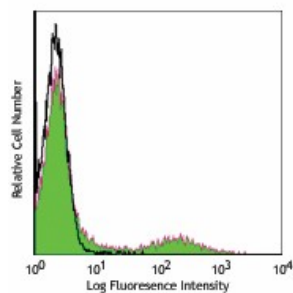
## Other Formats

---

Purified anti-human HLA-DR, Biotin anti-human HLA-DR, FITC anti-human HLA-DR, PE anti-human HLA-DR, Alexa Fluor® 488 anti-human HLA-DR, Alexa Fluor® 647 anti-human HLA-DR, Alexa Fluor® 700 anti-human HLA-DR, Pacific Blue™ anti-human HLA-DR, PE/Cyanine7 anti-human HLA-DR, PerCP/Cyanine5.5 anti-human HLA-DR, APC anti-human HLA-DR, APC/Fire™ 750 anti-human HLA-DR

## Product Data

---



Human peripheral blood lymphocytes stained with LN-3 FITC

For research use only. Not for diagnostic use. Not for resale. BioLegend will not be held responsible for patent infringement or other violations that may occur with the use of our products.

\*These products may be covered by one or more Limited Use Label Licenses (see the BioLegend Catalog or our website, [www.biolegend.com/ordering#license](http://www.biolegend.com/ordering#license)). BioLegend products may not be transferred to third parties, resold, modified for resale, or used to manufacture commercial products, reverse engineer functionally similar materials, or to provide a service to third parties without written approval of BioLegend. By use of these products you accept the terms and conditions of all applicable Limited Use Label Licenses. Unless otherwise indicated, these products are for research use only and are not intended for human or animal diagnostic, therapeutic or commercial use.

8999 BioLegend Way, San Diego, CA 92121 [www.biolegend.com](http://www.biolegend.com)  
Toll-Free Phone: 1-877-Bio-Legend (246-5343) Phone: (858) 768-5800 Fax: (877) 455-9587

