

FITC anti-rat CD335 (NKp46) Antibody

Catalog# / Size	250805 / 25 µg 250806 / 100 µg
Clone	WEN23
Regulatory Status	RUO
Other Names	NCR1, NKP46, LY94
Isotype	Mouse IgG1, κ
Description	CD335, also known as NKp46, is a glycoprotein of the natural cytotoxicity receptor (NCR) family with 2 Ig-like domains and a short cytoplasmic tail. CD335 expression is restricted to NK cells and a subset of NKT cells; it's not expressed in CD1d-restricted NKT cells. NKp46 functions as a cytotoxicity triggering receptor.

Product Details

Verified Reactivity	Rat
Antibody Type	Monoclonal
Host Species	Mouse
Immunogen	Rat NKp46 ectodomain recombinant protein
Formulation	Phosphate-buffered solution, pH 7.2, containing 0.09% sodium azide.
Preparation	The antibody was purified by affinity chromatography and conjugated with FITC under optimal conditions.
Concentration	0.5 mg/ml
Storage & Handling	The antibody solution should be stored undiluted between 2°C and 8°C, and protected from prolonged exposure to light. Do not freeze.
Application	FC - Quality tested
Recommended Usage	Each lot of this antibody is quality control tested by immunofluorescent staining with flow cytometric analysis . For flow cytometric staining, the suggested use of this reagent is ≤ 0.5 µg per million cells in 100 µl volume. It is recommended that the reagent be titrated for optimal performance for each application.
Excitation Laser	Blue Laser (488 nm)
RRID	AB_2728234 (BioLegend Cat. No. 250805) AB_2728235 (BioLegend Cat. No. 250806)

Antigen Details

Structure	Single-pass type I membrane protein, 46 kD; belongs to the natural cytotoxicity receptor (NCR) family; contains 2 Ig-like (immunoglobulin-like) domains.
Distribution	Mature and immature NK cells, subset of NKT cells, but not on CD1d-restricted NKT cells.
Function	NK cells activation
Ligand/Receptor	Viral hemagglutinins, heparan sulfate proteoglycans
Cell Type	NK cells, NKT cells
Biology Area	Immunology, Innate Immunity

Molecular Family CD Molecules

Antigen References

1. Westgaard IH, et al. 2004. J. Leuko. Biol. 76:1200.
2. Falco M, et al. 1999. Immunol. Lett. 68:411.
3. Caligiuri MA. 2008. Blood. 112:461.

Gene ID [117547](#)

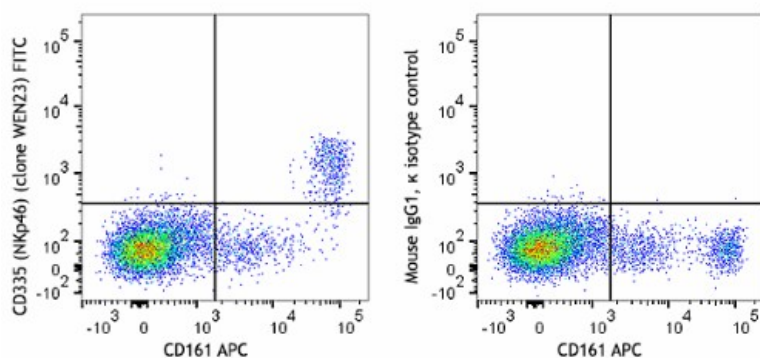
Related Protocols

[Cell Surface Flow Cytometry Staining Protocol](#)

Other Formats

Purified anti-rat CD335 (NKp46), PE anti-rat CD335 (NKp46), FITC anti-rat CD335 (NKp46), APC anti-rat CD335 (NKp46)

Product Data



Rat splenocytes were stained with anti-rat CD335 FITC (clone WEN23; left) or Mouse IgG1, κ Isotype control FITC (right) followed by APC anti-rat CD161.

For research use only. Not for diagnostic use. Not for resale. BioLegend will not be held responsible for patent infringement or other violations that may occur with the use of our products.

*These products may be covered by one or more Limited Use Label Licenses (see the BioLegend Catalog or our website, www.biolegend.com/ordering#license). BioLegend products may not be transferred to third parties, resold, modified for resale, or used to manufacture commercial products, reverse engineer functionally similar materials, or to provide a service to third parties without written approval of BioLegend. By use of these products you accept the terms and conditions of all applicable Limited Use Label Licenses. Unless otherwise indicated, these products are for research use only and are not intended for human or animal diagnostic, therapeutic or commercial use.

8999 BioLegend Way, San Diego, CA 92121 www.biolegend.com
Toll-Free Phone: 1-877-Bio-Legend (246-5343) Phone: (858) 768-5800 Fax: (877) 455-9587