

Go-ChIP-Grade™ Purified Mouse IgG2a, κ isotype Ctrl Antibody

Catalog# / Size	400287 / 25 µg 400288 / 100 µg
Clone	MOPC-173
Regulatory Status	RUO
Isotype	Mouse IgG2a, κ
Description	The MOPC-173 immunoglobulin has unknown specificity. The isotype of this antibody is mouse IgG2a, κ. This antibody was chosen as an isotype control after screening on a variety of resting, activated, live, and fixed mouse, rat, and human tissues.

Product Details

Antibody Type	Monoclonal
Host Species	Mouse
Formulation	Phosphate-buffered solution, pH 7.2, containing 0.09% sodium azide.
Preparation	The antibody was purified by affinity chromatography.
Concentration	0.5 mg/ml
Storage & Handling	The antibody solution should be stored undiluted between 2°C and 8°C.
Application	ChIP - Quality tested FC - Verified
Recommended Usage	Each lot of this antibody is quality control tested by ChIP assay as negative control, and the purity is greater than 95% by SDS-PAGE. Use at concentrations comparable to those of the specific antibody of interest.
Application Notes	Additional reported applications (for the relevant formats) include: Intracellular Flow Cytometry (ICFC), Immunocytochemistry (ICC), Immunohistochemistry (IHC), Immunoprecipitation (IP), Western Blotting (WB), Functional Assay (FA).

Antigen Details

Gene ID	NA
----------------	----

Related Protocols

[BioLegend's Tools for Chromatin Immunoprecipitation \(ChIP\) Assays - Video](#)

[Chromatin Immunoprecipitation \(ChIP\) Assay Protocol](#)

[Cell Surface Flow Cytometry Staining Protocol](#)

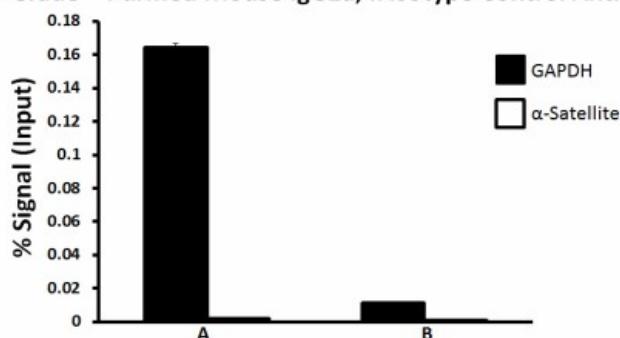
Other Formats

APC Mouse IgG2a, κ Isotype Ctrl, Biotin Mouse IgG2a, κ Isotype Ctrl, FITC Mouse IgG2a, κ Isotype Ctrl, PE Mouse IgG2a, κ Isotype Ctrl, PE/Cyanine5 Mouse IgG2a, κ Isotype Ctrl, Purified Mouse IgG2a, κ Isotype Ctrl, APC/Cyanine7 Mouse IgG2a, κ Isotype Ctrl,

PE/Cyanine7 Mouse IgG2a, κ Isotype Ctrl, Alexa Fluor® 647 Mouse IgG2a, κ Isotype Ctrl, Alexa Fluor® 488 Mouse IgG2a, κ Isotype Ctrl, Pacific Blue™ Mouse IgG2a, κ Isotype Ctrl, Alexa Fluor® 488 Mouse IgG2a, κ Isotype Ctrl (ICFC), Alexa Fluor® 647 Mouse IgG2a, κ Isotype Ctrl (ICFC), FITC Mouse IgG2a, κ Isotype Ctrl (ICFC), PE Mouse IgG2a, κ Isotype Ctrl (ICFC), APC Mouse IgG2a, κ Isotype Ctrl (ICFC), FITC Mouse IgG2a, κ Isotype Ctrl (FC), PE Mouse IgG2a, κ Isotype Ctrl (FC), APC Mouse IgG2a, κ Isotype Ctrl (FC), Brilliant Violet 605™ Mouse IgG2a, κ Isotype Ctrl, Alexa Fluor® 700 Mouse IgG2a, κ Isotype Ctrl, PerCP Mouse IgG2a, κ Isotype Ctrl, PerCP/Cyanine5.5 Mouse IgG2a, κ Isotype Ctrl, Brilliant Violet 421™ Mouse IgG2a, κ Isotype Ctrl, Brilliant Violet 570™ Mouse IgG2a, κ Isotype Ctrl, Ultra-LEAF™ Purified Mouse IgG2a, κ Isotype Ctrl, Brilliant Violet 510™ Mouse IgG2a, κ Isotype Ctrl, Brilliant Violet 650™ Mouse IgG2a, κ Isotype Ctrl, Brilliant Violet 711™ Mouse IgG2a, κ Isotype Ctrl, Brilliant Violet 785™ Mouse IgG2a, κ Isotype Ctrl, PE/Dazzle™ 594 Mouse IgG2a, κ Isotype Ctrl, Alexa Fluor® 594 Mouse IgG2a, κ Isotype Ctrl, FITC Mouse IgG2a, κ Isotype Ctrl, APC/Fire™ 750 Mouse IgG2a, κ Isotype Ctrl, TotalSeq™-A0091 Mouse IgG2a, κ isotype Ctrl, Go-ChIP-Grade™ Purified Mouse IgG2a, κ isotype Ctrl, TotalSeq™-B0091 Mouse IgG2a, κ isotype Ctrl, TotalSeq™-C0091 Mouse IgG2a, κ isotype Ctrl, KIRAVIA Blue 520™ Mouse IgG2a, κ Isotype Ctrl, Spark Blue™ 550 Mouse IgG2a, κ Isotype Ctrl, Spark NIR™ 685 Mouse IgG2a, κ Isotype Ctrl, Spark Violet™ 538 Mouse IgG2a, κ Isotype Ctrl, Spark YG™ 581 Mouse IgG2a, κ Isotype Ctrl, TotalSeq™-D0091 Mouse IgG2a, κ Isotype Ctrl, Spark YG™ 593 Mouse IgG2a, κ Isotype Ctrl, GMP PE Mouse IgG2a, κ Isotype Ctrl, GMP FITC Mouse IgG2a, κ Isotype Ctrl, GMP APC Mouse IgG2a, κ Isotype Ctrl, GMP PE/Dazzle™ 594 Mouse IgG2a, κ Isotype Ctrl

Product Data

Go-ChIP-Grade™ Purified Mouse IgG2a, κ Isotype Control Antibody



Chromatin Immunoprecipitations (ChIP) were performed with cross-linked chromatin samples from 4×10^6 HeLa cells with either A) 1:300 dilution of Go-ChIP-Grade™ Purified anti-RNA Polymerase II RPB1 antibody (clone 8WG16, Cat. No. 664911) or B) equal amount of Go-ChIP-Grade™ purified mouse IgG2a, κ isotype control antibody (clone MOPC-173, Cat. No. 400287) by using Go-ChIP-Grade™ Protein G Enzymatic Kit (Cat. No. 699904). The enriched DNA was purified and quantified by real-time qPCR using primers targeting human GAPDH gene region and α-Satellite repeats. The amount of immunoprecipitated DNA in each sample is represented as signal relative to total amount of input chromatin.

For research use only. Not for diagnostic use. Not for resale. BioLegend will not be held responsible for patent infringement or other violations that may occur with the use of our products.

*These products may be covered by one or more Limited Use Label Licenses (see the BioLegend Catalog or our website, www.biolegend.com/ordering#license). BioLegend products may not be transferred to third parties, resold, modified for resale, or used to manufacture commercial products, reverse engineer functionally similar materials, or to provide a service to third parties without written approval of BioLegend. By use of these products you accept the terms and conditions of all applicable Limited Use Label Licenses. Unless otherwise indicated, these products are for research use only and are not intended for human or animal diagnostic, therapeutic or commercial use.

8999 BioLegend Way, San Diego, CA 92121 www.biolegend.com
Toll-Free Phone: 1-877-Bio-Legend (246-5343) Phone: (858) 768-5800 Fax: (877) 455-9587