

Pacific Blue™ anti-human CD56 (NCAM) Antibody

| | |
|--------------------------|--|
| Catalog# / Size | 362519 / 25 tests 362520 / 100 tests |
| Clone | 5.1H11 |
| Regulatory Status | RUO |
| Other Names | Leu-19, NKH1, NCAM-1 |
| Isotype | Mouse IgG1, κ |
| Description | CD56 is a single transmembrane glycoprotein also known as NCAM (neural cell adhesion molecule), Leu-19, or NKH1. It is a member of the Ig superfamily. The 140 kD isoform is expressed on NK and NKT cells. CD56 is also expressed in the brain (cerebellum and cortex) and at neuromuscular junctions. Certain large granular lymphocyte (LGL) leukemias, small-cell lung carcinomas, neuronal derived tumors, myelomas, and myeloid leukemias also express CD56. CD56 plays a role in homophilic and heterophilic adhesion via binding to itself or heparan sulfate. |

Product Details

| | |
|---|---|
| Verified Reactivity | Human |
| Antibody Type | Monoclonal |
| Host Species | Mouse |
| Immunogen | Human myotube cells |
| Formulation | Phosphate-buffered solution, pH 7.2, containing 0.09% sodium azide and BSA (origin USA) |
| Preparation | The antibody was purified by affinity chromatography and conjugated with Pacific Blue™ under optimal conditions. |
| Concentration | Lot-specific (to obtain lot-specific concentration, please enter the lot number in our Concentration and Expiration Lookup or Certificate of Analysis online tools.) |
| Storage & Handling | The antibody solution should be stored undiluted between 2°C and 8°C, and protected from prolonged exposure to light. Do not freeze. |
| Application | FC - Quality tested |
| Recommended Usage | Each lot of this antibody is quality control tested by immunofluorescent staining with flow cytometric analysis . For flow cytometric staining, the suggested use of this reagent is 5 µl per million cells in 100 µl staining volume or 5 µl per 100 µl of whole blood. * Pacific Blue™ has a maximum emission of 455 nm when it is excited at 405 nm. Prior to using Pacific Blue™ conjugate for flow cytometric analysis, please verify your flow cytometer's capability of exciting and detecting the fluorochrome. Alexa Fluor® and Pacific Blue™ are trademarks of Life Technologies Corporation. View full statement regarding label licenses |
| Excitation Laser | Violet Laser (405 nm) |
| Application References | 1. Walsh FS, <i>et al.</i> 1981. <i>Nature</i> 289:60. (FC) 2. Pavlath GK, <i>et al.</i> 1986. <i>J. Cell Biol.</i> 102:124. (FC) 3. Pavlath GK, <i>et al.</i> 1989. <i>Nature</i> 337:570. (FC) 4. Pulido R, <i>et al.</i> 1988. <i>J. Immunol.</i> 140:3851. (FC) |
| (PubMed link indicates BioLegend citation) | |
| Product Citations | 1. Bäcker-Koduah P, <i>et al.</i> 2020. <i>Ann Clin Transl Neurol.</i> 1.42222222. PubMed |

RRID

AB_2564096 (BioLegend Cat. No. 362519)
AB_2564097 (BioLegend Cat. No. 362520)

Antigen Details

| | |
|---------------------------|---|
| Structure | Ig superfamily, single transmembrane or GPI-anchored glycoprotein |
| Distribution | NK cells, T subset, neural tissue, some LGL and myeloid leukemias |
| Function | Adhesion |
| Ligand/Receptor | Heparan sulfate |
| Antigen References | 1. Lanier L, <i>et al.</i> 1991. <i>J. Immunol.</i> 146:4421 2. Hemperly J, <i>et al.</i> 1990. <i>J. Mol. Neurosci.</i> 2:71 3. Cremer H, <i>et al.</i> 1994. <i>Nature</i> 367:455. |
| Gene ID | 4684 |

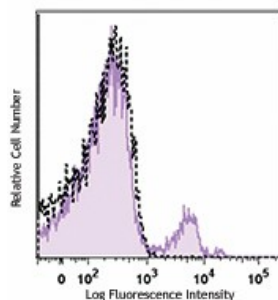
Related Protocols

[Cell Surface Flow Cytometry Staining Protocol](#)

Other Formats

Purified anti-human CD56 (NCAM), APC anti-human CD56 (NCAM), PerCP/Cyanine5.5 anti-human CD56 (NCAM), PE anti-human CD56 (NCAM), PE/Cyanine7 anti-human CD56 (NCAM), APC/Cyanine7 anti-human CD56 (NCAM), PE/Cyanine5 anti-human CD56 (NCAM), Alexa Fluor® 647 anti-human CD56 (NCAM), Alexa Fluor® 488 anti-human CD56 (NCAM), Pacific Blue™ anti-human CD56 (NCAM), Alexa Fluor® 700 anti-human CD56 (NCAM), PerCP anti-human CD56 (NCAM), Brilliant Violet 650™ anti-human CD56 (NCAM), Brilliant Violet 510™ anti-human CD56 (NCAM), Brilliant Violet 421™ anti-human CD56 (NCAM), Biotin anti-human CD56 (NCAM), Brilliant Violet 605™ anti-human CD56 (NCAM), Brilliant Violet 570™ anti-human CD56 (NCAM), Brilliant Violet 711™ anti-human CD56 (NCAM), PE/Dazzle™ 594 anti-human CD56 (NCAM), FITC anti-human CD56 (NCAM), Brilliant Violet 785™ anti-human CD56 (NCAM), Ultra-LEAF™ Purified anti-human CD56 (NCAM), APC/Fire™ 750 anti-human CD56 (NCAM), Brilliant Violet 750™ anti-human CD56 (NCAM), TotalSeq™-A0047 anti-human CD56 (NCAM), TotalSeq™-C0047 anti-human CD56 (NCAM), TotalSeq™-B0047 anti-human CD56 (NCAM), Spark NIR™ 685 anti-human CD56 (NCAM), KIRAVIA Blue 520™ anti-human CD56 (NCAM), GMP PE anti-human CD56 (NCAM), TotalSeq™-D0047 anti-human CD56 (NCAM), GMP APC anti-human CD56 (NCAM)

Product Data



Human peripheral blood lymphocytes were stained with CD56 (clone 5.1H11) Pacific Blue™ (filled histogram) or mouse IgG1, κ Pacific Blue™ isotype control (open histogram).

For research use only. Not for diagnostic use. Not for resale. BioLegend will not be held responsible for patent infringement or other violations that may occur with the use of our products.

*These products may be covered by one or more Limited Use Label Licenses (see the BioLegend Catalog or our website, www.biolegend.com/ordering#license). BioLegend products may not be transferred to third parties, resold, modified for resale, or used to manufacture commercial products, reverse engineer functionally similar materials, or to provide a service to third parties without written approval of BioLegend. By use of these products you accept the terms and conditions of all applicable Limited Use Label Licenses. Unless otherwise indicated, these products are for research use only and are not intended for human or animal diagnostic, therapeutic or commercial use.

8999 BioLegend Way, San Diego, CA 92121 www.biolegend.com
Toll-Free Phone: 1-877-Bio-Legend (246-5343) Phone: (858) 768-5800 Fax: (877) 455-9587

