

Pacific Blue™ anti-human HLA-DR Antibody

Catalog# / Size	327016 / 100 µg
Clone	LN3
Regulatory Status	RUO
Other Names	Major Histocompatibility Class II, MHC class II
Isotype	Mouse IgG2b, κ
Description	The LN3 monoclonal antibody reacts with the HLA-DR antigen, a member of MHC class II molecules. HLA-DR is a heterodimeric cell surface glycoprotein comprised of a 36 kD α (heavy) chain and a 27 kD β (light) chain. It is expressed on B cells, activated T cells, monocytes/macrophages, dendritic cells and other non-professional APCs. In conjunction with the CD3/TCR complex and CD4 molecules, HLA-DR is critical for efficient peptide presentation to CD4 ⁺ T cells.

Product Details

Verified Reactivity	Human
Reported Reactivity	Rhesus
Antibody Type	Monoclonal
Host Species	Mouse
Immunogen	human PBL
Formulation	Phosphate-buffered solution, pH 7.2, containing 0.09% sodium azide.
Preparation	The antibody was purified by affinity chromatography, and conjugated with Pacific Blue™ under optimal conditions.
Concentration	0.5 mg/ml
Storage & Handling	The antibody solution should be stored undiluted between 2°C and 8°C, and protected from prolonged exposure to light. Do not freeze.
Application	FC - Quality tested
Recommended Usage	<p>Each lot of this antibody is quality control tested by immunofluorescent staining with flow cytometric analysis. The suggested use of this reagent is ≤ 0.5 µg per 10⁶ cells in 100 µl volume or 100 µl of whole blood. It is highly recommended that the reagent be titrated for optimal performance for each application.</p> <p>* Pacific Blue™ has a maximum emission of 455 nm when it is excited at 405 nm. Prior to using Pacific Blue™ conjugate for flow cytometric analysis, please verify your flow cytometer's capability of exciting and detecting the fluorochrome.</p> <p>Alexa Fluor® and Pacific Blue™ are trademarks of Life Technologies Corporation.</p> <p>View full statement regarding label licenses</p>
Excitation Laser	Violet Laser (405 nm)
Application Notes	Additional reported applications (for the relevant formats) include; immunohistochemical staining ¹ of frozen sections and formalin-fixed paraffin-embedded sections ¹ , and immunoprecipitation ¹ .
Application References	<ol style="list-style-type: none"> 1. Marder RJ, <i>et al.</i> 1985. <i>Lab. Invest.</i> 52:497. 2. Norton AJ and Isaacson PG. 1987. <i>Am. J. Pathol.</i> 128:225. 3. Hua ZX, <i>et al.</i> 1998. <i>Hum. Pathol.</i> 29(12):1441.
(PubMed link indicates BioLegend citation)	
Product Citations	<ol style="list-style-type: none"> 1. Frikeche J, <i>et al.</i> 2012. <i>Immunobiology.</i> 217:704. PubMed

2. Ma A, *et al.* 2019. Hum Vaccin Immunother. :1. [PubMed](#)
3. Philippeos C, *et al.* 2018. J Invest Dermatol. 138:811. [PubMed](#)
4. Lichtenegger FS, *et al.* 2018. Front Immunol. 9:385. [PubMed](#)
5. Oulès B, *et al.* 2020. Nat Commun. 3.977083333. [PubMed](#)

RRID AB_893564 (BioLegend Cat. No. 327016)

Antigen Details

Structure	Ig superfamily, MHC class II, heterodimeric transmembrane protein
Distribution	B cells, activated T cells, monocytes/macrophages, dendritic cells, other APCs
Function	Peptide presentation
Ligand/Receptor	CD3/TCR, CD4
Cell Type	Antigen-presenting cells, B cells, Dendritic cells, Macrophages, Monocytes, T cells, Tregs
Biology Area	Immunology, Innate Immunity
Molecular Family	MHC Antigens
Antigen References	<ol style="list-style-type: none"> 1. Levacher M, <i>et al.</i> 1990. <i>Clin. Exp. Immunol.</i> 81:177. 2. Terstappen L, <i>et al.</i> 1990. <i>J. Leuk. Biol.</i> 48:138. 3. Edwards J, <i>et al.</i> 1985. <i>J. Immunol.</i> 137:490. 4. van Es A, <i>et al.</i> 1984. <i>Transplantation</i> 37:65. 5. O'Doherty U, <i>et al.</i> 1994. <i>Immunology</i> 82:487. 6. Thomas R, <i>et al.</i> 1994. <i>J. Immunol.</i> 153:4016. 7. Grouard G, <i>et al.</i> 1996. <i>Nature</i> 384:364.
Gene ID	3122 3123

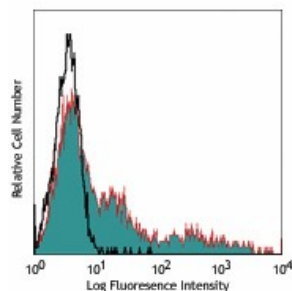
Related Protocols

[Cell Surface Flow Cytometry Staining Protocol](#)

Other Formats

Purified anti-human HLA-DR, Biotin anti-human HLA-DR, FITC anti-human HLA-DR, PE anti-human HLA-DR, Alexa Fluor® 488 anti-human HLA-DR, Alexa Fluor® 647 anti-human HLA-DR, Alexa Fluor® 700 anti-human HLA-DR, Pacific Blue™ anti-human HLA-DR, PE/Cyanine7 anti-human HLA-DR, PerCP/Cyanine5.5 anti-human HLA-DR, APC anti-human HLA-DR, APC/Fire™ 750 anti-human HLA-DR

Product Data



Human peripheral blood lymphocytes stained with LN3 Pacific Blue™

use of our products.

*These products may be covered by one or more Limited Use Label Licenses (see the BioLegend Catalog or our website, www.biolegend.com/ordering#license). BioLegend products may not be transferred to third parties, resold, modified for resale, or used to manufacture commercial products, reverse engineer functionally similar materials, or to provide a service to third parties without written approval of BioLegend. By use of these products you accept the terms and conditions of all applicable Limited Use Label Licenses. Unless otherwise indicated, these products are for research use only and are not intended for human or animal diagnostic, therapeutic or commercial use.

8999 BioLegend Way, San Diego, CA 92121 www.biolegend.com
Toll-Free Phone: 1-877-Bio-Legend (246-5343) Phone: (858) 768-5800 Fax: (877) 455-9587