

PE anti-human CD360 (IL-21R) Antibody

| | |
|--------------------------|---|
| Catalog# / Size | 376103 / 25 tests 376104 / 100 tests |
| Clone | W18100A |
| Regulatory Status | RUO |
| Other Names | IL-21 Receptor, novel interleukin receptor (NILR) |
| Isotype | Rat IgG2a, κ |
| Description | <p>The human interleukin 21 receptor (IL-21R), is a single pass type I membrane protein and a member of the type I cytokine receptor family. Of the type I cytokine receptors, IL-21R exhibits the greatest extracellular homology to the IL-2R beta subunit, i.e., contains one copy of the WSXWS-containing cytokine-binding domain. Intracellular domains of IL-21R include the Box 1 and Box 2 elements which are similar to the IL-9R intracellular region. Upon binding IL-21, the IL-21R forms a heterodimer with the common gamma subunit (CD132) and induces Jak/Stat signaling. IL-21R is expressed on B cells and at various levels on NK and T cells. IL-21 is a potent immunomodulatory cytokine mainly produced by NKT and CD4 T-cells (particularly the inflammatory Th17 subset) and has pleiotropic effects on both innate and adaptive immune responses. These actions include positive effects such as enhanced proliferation of natural killer (NK) cells and cytotoxic T cells that can destroy virally infected or cancerous cells and direct inhibitory effects on the antigen-presenting function of dendritic cells. It can also be proapoptotic for B cells and NK cells. Recent studies have shown that IL-21 is also an autocrine cytokine that potently induces Th17 differentiation and suppresses Foxp3 expression, and serves as a target for treating inflammatory diseases.</p> |

Product Details

| | |
|-------------------------------|---|
| Verified Reactivity | Human |
| Antibody Type | Monoclonal |
| Host Species | Rat |
| Immunogen | Extracellular domain of hIL-21R |
| Formulation | Phosphate-buffered solution, pH 7.2, containing 0.09% sodium azide and BSA (origin USA) |
| Preparation | The antibody was purified by affinity chromatography and conjugated with PE under optimal conditions. |
| Concentration | Lot-specific (to obtain lot-specific concentration, please enter the lot number in our Concentration and Expiration Lookup or Certificate of Analysis online tools.) |
| Storage & Handling | The antibody solution should be stored undiluted between 2°C and 8°C, and protected from prolonged exposure to light. Do not freeze. |
| Application | FC - Quality tested |
| Recommended Usage | Each lot of this antibody is quality control tested by immunofluorescent staining with flow cytometric analysis . For flow cytometric staining, the suggested use of this reagent is 5 μ L per million cells in 100 μ L staining volume or 5 μ L per 100 μ L of whole blood. It is recommended that the reagent be titrated for optimal performance for each application. |
| Excitation Laser | Blue Laser (488 nm) Green Laser (532 nm)/Yellow-Green Laser (561 nm) |
| RRID | AB_2890827 (BioLegend Cat. No. 376103) AB_2890827 (BioLegend Cat. No. 376104) |

Antigen Details

| | |
|---------------------------|--|
| Structure | Single pass type I membrane protein, extracellular WSXWS-containing cytokine-binding domain, intracellular Box1 and Box2 domains |
| Distribution | B cells, various levels on NK cells, T cells, NKT cells, B cells, DCs, macrophages, non-hematopoietic cells, including keratinocytes and fibroblasts |
| Ligand/Receptor | IL-21 |
| Antigen References | <ol style="list-style-type: none"> 1. De Leur, <i>et al.</i> 2017. <i>Front Immunol.</i> 8:306. 2. Cheekatla, <i>et al.</i> 2017. <i>J Immunol.</i> 199, 2815-2822 3. Zheng, <i>et al.</i> 2018. <i>Oncoimmunology.</i> 7(12) |
| Gene ID | 50615 |

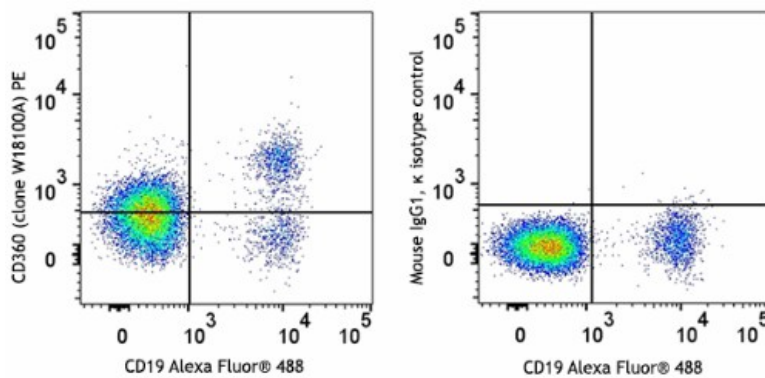
Related Protocols

[Cell Surface Flow Cytometry Staining Protocol](#)

Other Formats

APC anti-human CD360 (IL-21R), PE anti-human CD360 (IL-21R) Antibody, Purified anti-human CD360 (IL-21R) Antibody, Brilliant Violet 421™ anti-human CD360 (IL-21R)

Product Data



Human peripheral blood lymphocytes were stained with anti-human CD19 Alexa Fluor® 488 and anti-human CD360 (IL-21R) (clone W18100A) PE (left) or rat IgG2a, κ PE isotype control (right).

For research use only. Not for diagnostic use. Not for resale. BioLegend will not be held responsible for patent infringement or other violations that may occur with the use of our products.

*These products may be covered by one or more Limited Use Label Licenses (see the BioLegend Catalog or our website, www.biolegend.com/ordering#license). BioLegend products may not be transferred to third parties, resold, modified for resale, or used to manufacture commercial products, reverse engineer functionally similar materials, or to provide a service to third parties without written approval of BioLegend. By use of these products you accept the terms and conditions of all applicable Limited Use Label Licenses. Unless otherwise indicated, these products are for research use only and are not intended for human or animal diagnostic, therapeutic or commercial use.

8999 BioLegend Way, San Diego, CA 92121 www.biolegend.com
Toll-Free Phone: 1-877-Bio-Legend (246-5343) Phone: (858) 768-5800 Fax: (877) 455-9587