

## PE anti-human Ig light chain $\lambda$ Antibody

<b>Catalog# / Size</b>	374603 / 25 tests 374604 / 100 tests
<b>Clone</b>	1-155-2
<b>Regulatory Status</b>	RUO
<b>Other Names</b>	Ig
<b>Isotype</b>	Mouse IgG1, $\kappa$
<b>Description</b>	The 1-155-2 antibody reacts with both soluble and membrane human immunoglobulin light chain lambda ( $\lambda$ ). It does not react with human immunoglobulin light chain kappa ( $\kappa$ ) or heavy chains

### Product Details

---

<b>Verified Reactivity</b>	Human
<b>Antibody Type</b>	Monoclonal
<b>Host Species</b>	Mouse
<b>Immunogen</b>	human IgA <sub>1</sub> - $\lambda$ myeloma protein
<b>Formulation</b>	Phosphate-buffered solution, pH 7.2, containing 0.09% sodium azide and BSA (origin USA)
<b>Preparation</b>	The antibody was purified by affinity chromatography and conjugated with PE under optimal conditions.
<b>Concentration</b>	Lot-specific (to obtain lot-specific concentration, please enter the lot number in our <a href="#">Concentration and Expiration Lookup</a> or <a href="#">Certificate of Analysis</a> online tools.)
<b>Storage &amp; Handling</b>	The antibody solution should be stored undiluted between 2°C and 8°C, and protected from prolonged exposure to light. <b>Do not freeze.</b>
<b>Application</b>	<a href="#">FC - Quality tested</a>
<b>Recommended Usage</b>	Each lot of this antibody is quality control tested by <a href="#">immunofluorescent staining with flow cytometric analysis</a> . For flow cytometric staining, the suggested use of this reagent is 5 $\mu$ L per million cells in 100 $\mu$ L staining volume or 5 $\mu$ L per 100 $\mu$ L of whole blood. It is recommended that the reagent be titrated for optimal performance for each application.
<b>Excitation Laser</b>	Blue Laser (488 nm) Green Laser (532 nm)/Yellow-Green Laser (561 nm)
<b>RRID</b>	AB_2924567 (BioLegend Cat. No. 374603) AB_2924567 (BioLegend Cat. No. 374604)

### Antigen Details

---

<b>Distribution</b>	Subset of B cells
<b>Cell Type</b>	B cells
<b>Gene ID</b>	<a href="#">3535</a>

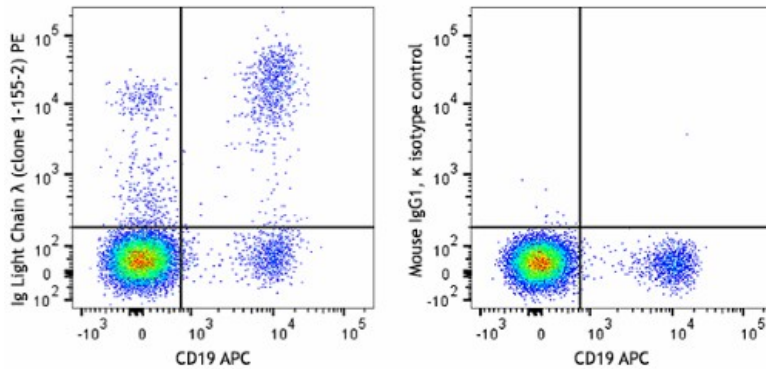
### Related Protocols

---

## Other Formats

Purified anti-human Ig light chain  $\lambda$ , PE anti-human Ig light chain  $\lambda$ , APC/Fire™ 750 anti-human Ig light chain  $\lambda$

## Product Data



Overnight cultured human peripheral blood lymphocytes were stained with anti-human CD19 APC and anti-human Ig light chain  $\lambda$  (clone 1-155-2) PE (left) or mouse IgG1,  $\kappa$  PE isotype control (right).

For research use only. Not for diagnostic use. Not for resale. BioLegend will not be held responsible for patent infringement or other violations that may occur with the use of our products.

\*These products may be covered by one or more Limited Use Label Licenses (see the BioLegend Catalog or our website, [www.biolegend.com/ordering#license](http://www.biolegend.com/ordering#license)). BioLegend products may not be transferred to third parties, resold, modified for resale, or used to manufacture commercial products, reverse engineer functionally similar materials, or to provide a service to third parties without written approval of BioLegend. By use of these products you accept the terms and conditions of all applicable Limited Use Label Licenses. Unless otherwise indicated, these products are for research use only and are not intended for human or animal diagnostic, therapeutic or commercial use.

8999 BioLegend Way, San Diego, CA 92121 [www.biolegend.com](http://www.biolegend.com)  
Toll-Free Phone: 1-877-Bio-Legend (246-5343) Phone: (858) 768-5800 Fax: (877) 455-9587