

PerCP/Cyanine5.5 anti-human HLA-A2 Antibody

Catalog# / Size	343315 / 25 tests 343316 / 100 tests
Clone	BB7.2
Regulatory Status	RUO
Other Names	MHC-class I
Isotype	Mouse IgG2b, κ
Description	HLA-A2 is most common in Northern Asia and North America populations. MHC class I antigens associated with β 2-microglobulin are expressed by all human nucleated cells. MHC class I molecules are involved in presentation of antigens to CD8 ⁺ T cells, playing an important role in cell-mediated immune responses and tumor surveillance.

Product Details

Verified Reactivity	Human
Antibody Type	Monoclonal
Host Species	Mouse
Immunogen	Papain solubilized HLA-A2
Formulation	Phosphate-buffered solution, pH 7.2, containing 0.09% sodium azide and BSA (origin USA)
Preparation	The antibody was purified by affinity chromatography and conjugated with PerCP/Cyanine5.5 under optimal conditions.
Concentration	Lot-specific (to obtain lot-specific concentration, please enter the lot number in our Concentration and Expiration Lookup or Certificate of Analysis online tools.)
Storage & Handling	The antibody solution should be stored undiluted between 2°C and 8°C, and protected from prolonged exposure to light. Do not freeze.
Application	FC - Quality tested
Recommended Usage	Each lot of this antibody is quality control tested by immunofluorescent staining with flow cytometric analysis . For flow cytometric staining, the suggested use of this reagent is 5 μ l per million cells in 100 μ l staining volume or 5 μ l per 100 μ l of whole blood. * PerCP/Cyanine5.5 has a maximum absorption of 482 nm and a maximum emission of 690 nm.
Application Notes	The BB7.2 antibody recognizes human leukocyte antigen (HLA) A2 which is a subset of MHC-class I molecules encoded by A*02 alleles. Additional reported applications (for the relevant formats) include: immunoprecipitation ³ .
Additional Product Notes	BioLegend is in the process of converting the name PerCP/Cy5.5 to PerCP/Cyanine5.5. The dye molecule remains the same, so you should expect the same quality and performance from our PerCP/Cyanine5.5 products. Contact Technical Service if you have any questions.
Application References	1. Brodsky FM, <i>et al.</i> 1979. <i>Immunol. Rev.</i> 47:3. 2. Parham P and Brodsky FM. <i>et al.</i> 1981. <i>Hum. Immunol.</i> 3:277. 3. Lubben NB, <i>et al.</i> 2007. <i>Mol Biol Cell.</i> 18:3351. (IP)
(PubMed link indicates BioLegend citation)	
RRID	AB_2561572 (BioLegend Cat. No. 343315) AB_2561573 (BioLegend Cat. No. 343316)

Antigen Details

Structure	Ig superfamily
Distribution	A*02 individuals leukocytes
Function	Antigen presentation
Ligand/Receptor	CD8, CD3/TCR
Cell Type	Leukocytes
Biology Area	Immunology
Molecular Family	MHC Antigens
Gene ID	3105

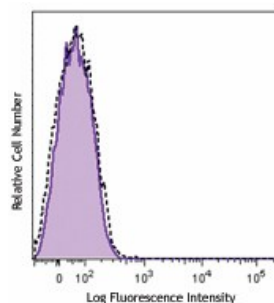
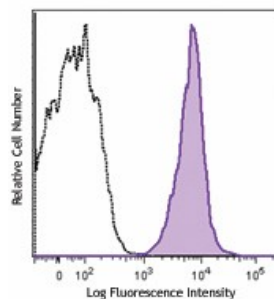
Related Protocols

[Cell Surface Flow Cytometry Staining Protocol](#)

Other Formats

Alexa Fluor® 700 anti-human HLA-A2, Purified anti-human HLA-A2, FITC anti-human HLA-A2, PE anti-human HLA-A2, APC/Cyanine7 anti-human HLA-A2, APC anti-human HLA-A2, Pacific Blue™ anti-human HLA-A2, PE/Cyanine7 anti-human HLA-A2, PerCP/Cyanine5.5 anti-human HLA-A2, Brilliant Violet 510™ anti-human HLA-A2, Biotin anti-human HLA-A2, Brilliant Violet 650™ anti-human HLA-A2, Brilliant Violet 785™ anti-human HLA-A2, Brilliant Violet 421™ anti-human HLA-A2, APC/Fire™ 750 anti-human HLA-A2, PE/Dazzle™ 594 anti-human HLA-A2 Antibody, TotalSeq™-B0899 anti-human HLA-A2, TotalSeq™-C0899 anti-human HLA-A2

Product Data



Peripheral blood lymphocytes from HLA-A2 positive (top) and HLA-A2 negative (bottom) donors were stained with anti-human HLA-A2 (clone BB7.2) PerCP/Cyanine5.5 (filled histograms) or mouse IgG2b PerCP/Cyanine5.5 isotype control (open histograms).

For research use only. Not for diagnostic use. Not for resale. BioLegend will not be held responsible for patent infringement or other violations that may occur with the use of our products.

*These products may be covered by one or more Limited Use Label Licenses (see the BioLegend Catalog or our website, www.biolegend.com/ordering#license). BioLegend products may not be transferred to third parties, resold, modified for resale, or used to manufacture commercial products, reverse engineer functionally similar materials, or to provide a service to third parties without written approval of BioLegend. By use of these products you accept the terms and conditions of all applicable Limited Use Label Licenses. Unless otherwise indicated, these products are for research use only and are not intended for human or animal diagnostic, therapeutic or commercial use.

8999 BioLegend Way, San Diego, CA 92121 www.biolegend.com
Toll-Free Phone: 1-877-Bio-Legend (246-5343) Phone: (858) 768-5800 Fax: (877) 455-9587