

## Purified anti-human CD196 (CCR6) Recombinant Antibody

<b>Catalog# / Size</b>	399002 / 100 µg
<b>Clone</b>	QA17A37
<b>Regulatory Status</b>	RUO
<b>Other Names</b>	BN-1, CKR6, DCR2, CKRL3, DRY-6, GPR29, CKR-L3, CMKBR6, GPRCY4, STRL22, GPR-CY4
<b>Isotype</b>	Mouse IgG1, κ
<b>Description</b>	CCR6, also known as CD196, is a chemokine receptor that is expressed on immature dendritic cells, B lymphocytes, and memory T cells. CCR6 binds CCL20, although members of the β defensin family also bind CCR6 with a lower affinity. CCR6 positive cells, and its ligand CCL20, have been detected in numerous organs, especially the secondary lymphoid organ. CCL20 is selectively made by the follicle-associated epithelium (FAE) overlying Peyer's Patches (PPs) and isolated lymphoid follicles (ILFs). CCL20 contributes to the recruitment of CCR6-expressing B cells to these structures. In humans, CCR6 can function to mediate arrest of T cells on dermal endothelial cells and is highly expressed on T cells resident in both normal and psoriatic skin. CCR6 and/or CCL20 have been implicated in the pathogenesis of rheumatoid arthritis and inflammatory bowel disease. Human T cells that are able to produce IL-17 express CCR6. It suggests that CCL20 and CCR6 have a role in inflammatory diseases by recruiting Th17 cells to target tissues.

### Product Details

<b>Verified Reactivity</b>	Human
<b>Antibody Type</b>	Recombinant
<b>Host Species</b>	Mouse
<b>Formulation</b>	Phosphate-buffered solution, pH 7.2, containing 0.09% sodium azide
<b>Preparation</b>	The antibody was purified by affinity chromatography.
<b>Concentration</b>	0.5 mg/mL
<b>Storage &amp; Handling</b>	The antibody solution should be stored undiluted between 2°C and 8°C.
<b>Application</b>	<a href="#">FC - Quality tested</a>
<b>Recommended Usage</b>	Each lot of this antibody is quality control tested by <a href="#">immunofluorescent staining with flow cytometric analysis</a> . For flow cytometric staining, the suggested use of this reagent is ≤ 0.5 µg per million cells in 100 µL volume. It is recommended that the reagent be titrated for optimal performance for each application.
<b>Application Notes</b>	This recombinant antibody clone is derived from clone G034E3.
<b>RRID</b>	AB_2892469 (BioLegend Cat. No. 399002)

### Antigen Details

<b>Structure</b>	Chemokine receptor, GPCR, seven transmembrane receptor
<b>Distribution</b>	Immature dendritic cells, B lymphocytes, memory T cells, Th17 cells
<b>Function</b>	Host defense, important for recruitment of B cells to secondary lymphoid organs, mediates arrest of T cells on dermal endothelial cells
<b>Ligand/Receptor</b>	CCL20 (MIP-3α)
<b>Molecular Family</b>	Cytokine/Chemokine Receptors

## Antigen References

1. Zaballos A, et al. 1996. *Biochem. Bioph. Res. Co.* 227:846.
2. Yang D, et al. 1999. *Science* 286:525.
3. MacDonald KG, et al. 2007. *Am. J. Pathol.* 170:1229.
4. Homey B, et al. 2000. *J. Immunol.* 164:6621.
5. Hirota K, et al. 2007. *J. Exp. Med.* 204:2803.
6. Singh SP, et al. 2008. *J. Immunol.* 180:214.

Gene ID

[1235](#)

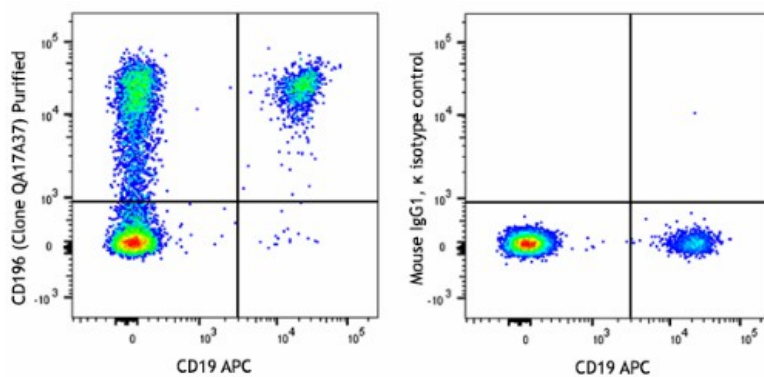
## Related Protocols

[Cell Surface Flow Cytometry Staining Protocol](#)

## Other Formats

APC anti-human CD196 (CCR6) Recombinant Antibody, PE anti-human CD196 (CCR6) Recombinant Antibody, Purified anti-human CD196 (CCR6) Recombinant Antibody, KIRAVIA Blue 520™ anti-human CD196 (CCR6) Recombinant Antibody

## Product Data



Human peripheral lymphocytes were stained with CD19 APC and purified CD196 (CCR6) recombinant (clone QA17A37) (left), or purified mouse IgG1,  $\kappa$  isotype control (right), followed by anti-mouse IgG PE.

For research use only. Not for diagnostic use. Not for resale. BioLegend will not be held responsible for patent infringement or other violations that may occur with the use of our products.

\*These products may be covered by one or more Limited Use Label Licenses (see the BioLegend Catalog or our website, [www.biolegend.com/ordering#license](http://www.biolegend.com/ordering#license)). BioLegend products may not be transferred to third parties, resold, modified for resale, or used to manufacture commercial products, reverse engineer functionally similar materials, or to provide a service to third parties without written approval of BioLegend. By use of these products you accept the terms and conditions of all applicable Limited Use Label Licenses. Unless otherwise indicated, these products are for research use only and are not intended for human or animal diagnostic, therapeutic or commercial use.

8999 BioLegend Way, San Diego, CA 92121 [www.biolegend.com](http://www.biolegend.com)  
Toll-Free Phone: 1-877-Bio-Legend (246-5343) Phone: (858) 768-5800 Fax: (877) 455-9587