

Purified anti-rat CD326 (Ep-CAM) Antibody

Catalog# / Size	251002 / 100 µg
Clone	10D6
Regulatory Status	RUO
Other Names	CD326, EGP40, MIC18, TROP1, KSA
Isotype	Mouse IgG1, κ
Description	Ep-CAM (CD326) mediates calcium-independent homophilic cell to cell adhesion. It may also function as a growth factor receptor. It is thought to be involved in maintaining cells in position during proliferation. Expression of Ep-CAM seems to correlate inversely with the level of E-cadherin (CD324). Ep-CAM is considered important in tumor biology.

Product Details

Verified Reactivity	Rat
Antibody Type	Monoclonal
Host Species	Mouse
Formulation	Phosphate-buffered solution, pH 7.2, containing 0.09% sodium azide
Preparation	The antibody was purified by affinity chromatography.
Concentration	0.5 mg/mL
Storage & Handling	The antibody solution should be stored undiluted between 2°C and 8°C.
Application	IHC-F - Quality tested
Recommended Usage	Each lot of this antibody is quality control tested by immunohistochemical staining on frozen tissue sections. For immunohistochemistry, a concentration range of 5 - 10 µg/mL is suggested. It is recommended that the reagent be titrated for optimal performance for each application.
RRID	AB_2876582 (BioLegend Cat. No. 251002)

Antigen Details

Function	Mediates calcium-independent homophilic cell-cell adhesion
Interaction	CD326 displays hemophilic binding.
Ligand/Receptor	CD305 (LAIR-1), CD306 (LAIR-2), and Ep-CAM
Cell Type	Embryonic Stem Cells, Epithelial cells
Biology Area	Immunology, Stem Cells
Molecular Family	Adhesion Molecules, CD Molecules
Gene ID	171577

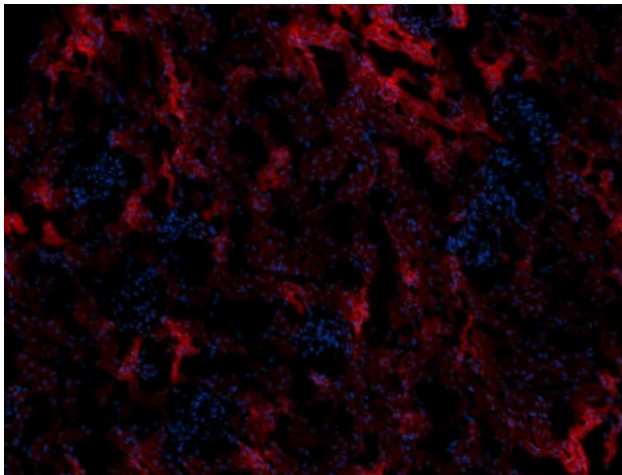
Related Protocols

[Immunohistochemistry Protocol for Frozen Sections](#)

Other Formats

Purified anti-rat CD326 (Ep-CAM), Alexa Fluor® 594 anti-rat CD326 (Ep-CAM), Alexa Fluor® 647 anti-rat CD326 (Ep-CAM)

Product Data



Rat frozen kidney section was fixed with 4% paraformaldehyde for ten minutes at room temperature and blocked with 5% FBS for 30 minutes at room temperature. Then, the section was stained with 10 µg/mL purified CD326 (clone 10D6) overnight at 4°C, followed by 2.5 µg/mL of Alexa Fluor™ 594 anti-mouse IgG (Poly4053) (red) for one hour at room temperature. The image was captured by 10X objective.

For research use only. Not for diagnostic use. Not for resale. BioLegend will not be held responsible for patent infringement or other violations that may occur with the use of our products.

*These products may be covered by one or more Limited Use Label Licenses (see the BioLegend Catalog or our website, www.biolegend.com/ordering#license). BioLegend products may not be transferred to third parties, resold, modified for resale, or used to manufacture commercial products, reverse engineer functionally similar materials, or to provide a service to third parties without written approval of BioLegend. By use of these products you accept the terms and conditions of all applicable Limited Use Label Licenses. Unless otherwise indicated, these products are for research use only and are not intended for human or animal diagnostic, therapeutic or commercial use.

8999 BioLegend Way, San Diego, CA 92121 www.biolegend.com
Toll-Free Phone: 1-877-Bio-Legend (246-5343) Phone: (858) 768-5800 Fax: (877) 455-9587