

## Purified Mouse IgG2a, κ Isotype Ctrl Antibody

<b>Catalog# / Size</b>	400201 / 50 µg 400202 / 500 µg
<b>Clone</b>	MOPC-173
<b>Regulatory Status</b>	RUO
<b>Isotype</b>	Mouse IgG2a, κ
<b>Description</b>	The MOPC-173 immunoglobulin has unknown specificity. The isotype of this antibody is mouse IgG2a, κ. This antibody was chosen as an isotype control after screening on a variety of resting, activated, live, and fixed mouse, rat, and human tissues.

### Product Details

---

<b>Antibody Type</b>	Monoclonal
<b>Host Species</b>	Mouse
<b>Formulation</b>	Phosphate-buffered solution, pH 7.2, containing 0.09% sodium azide.
<b>Preparation</b>	The immunoglobulin was purified by affinity chromatography.
<b>Concentration</b>	0.5 mg/ml
<b>Storage &amp; Handling</b>	The immunoglobulin solution should be stored undiluted between 2°C and 8°C
<b>Application</b>	<a href="#">FC - Quality tested</a> <a href="#">ChIP - Verified</a> <a href="#">ICFC, ICC, IHC, IP, WB, FA - Reported in the literature, not verified in house</a>
<b>Recommended Usage</b>	Each lot of this antibody is quality control tested by immunofluorescent staining with flow cytometric analysis as negative control. Use at concentrations comparable to those of the specific antibody of interest.
<b>Application Notes</b>	Additional reported applications (for the relevant formats) include: Intracellular Flow Cytometry (ICFC), Immunocytochemistry (ICC), Immunohistochemistry (IHC), Immunoprecipitation (IP), Western Blotting (WB), Functional Assay (FA).

### Product Citations

- Ohno Y, *et al.* 2013. J Biochem. 154:355. [PubMed](#)
- Woo CM, *et al.* 2018. Mol Cell Proteomics. 17:764. [PubMed](#)
- Gallen C, *et al.* 2022. Vaccines (Basel). 10:. [PubMed](#)
- Krovi SH, *et al.* 2019. Proc Natl Acad Sci U S A. 116:22252. [PubMed](#)
- Hutt M, *et al.* 2018. Oncotarget. 9:11322. [PubMed](#)
- Drummond E, *et al.* 2020. Brain. 2803:143. [PubMed](#)
- Wurzer H, *et al.* 2021. Front Immunol. 12:619069. [PubMed](#)
- Nakajima NI, *et al.* 2017. Oncol Rep. 38:693. [PubMed](#)
- Bauer J, *et al.* 2022. Nat Commun. 13:6401. [PubMed](#)
- Beatson RE, *et al.* 2021. Cell Rep Med. 2:100473. [PubMed](#)
- Tanaka Y, *et al.* 2021. Int J Mol Sci. 22:. [PubMed](#)
- Dias J, *et al.* 2018. Proc Natl Acad Sci U S A. 115:E11513. [PubMed](#)
- Heger L, *et al.* 2018. Front Immunol. 9:744. [PubMed](#)
- Scherlinger M, *et al.* 2021. Sci Transl Med. 13:. [PubMed](#)
- álvaro-Benito M, *et al.* 2020. Cell Mol Immunol. 17:133. [PubMed](#)
- Serwas NK, *et al.* 2019. Nat Commun. 2:573611111. [PubMed](#)
- Lavie L, *et al.* 2022. Front Neurol. 13:811916. [PubMed](#)
- Nelde A, *et al.* 2018. Oncoimmunology. 7:e1316438. [PubMed](#)
- Tanaka Y, *et al.* 2020. Sci Rep. 10:17284. [PubMed](#)
- Podolin P, *et al.* 2008. J Immunol. 180:7989. [PubMed](#)
- Obiedat A, *et al.* 2020. J Mol Med (Berl). 98:135. [PubMed](#)
- Elias S, *et al.* 2020. Haematologica. . [PubMed](#)
- Lever JM, *et al.* 2019. JCI Insight. 4:e125503. [PubMed](#)
- Kissiov DU, *et al.* 2022. Elife. 11:. [PubMed](#)
- Barthélémy F, *et al.* 2019. Mol Ther Nucleic Acids. 1:152777778. [PubMed](#)
- Wosen JE, *et al.* 2019. Front Immunol. 1:784722222. [PubMed](#)

27. Dias J, *et al.* 2017. Proc Natl Acad Sci U S A. 114:E5434. [PubMed](#)
28. Arnaiz E, *et al.* 2021. Front Oncol. 11:779739. [PubMed](#)
29. Jones N, *et al.* 2017. Front Immunol. . 10.3389/fimmu.2017.01516. [PubMed](#)
30. Cheung KCP, *et al.* 2020. Nat Commun. 2.954861111. [PubMed](#)
31. Sasawatari S, *et al.* 2020. J Immunol. 1373:204. [PubMed](#)

## Antigen Details

Gene ID NA

## Related Protocols

[BioLegend's Tools for Chromatin Immunoprecipitation \(ChIP\) Assays - Video](#)

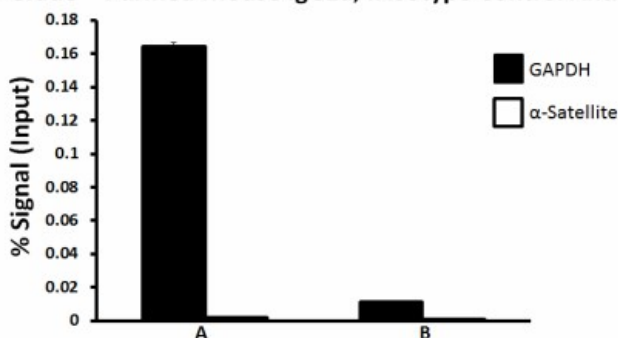
[Chromatin Immunoprecipitation \(ChIP\) Assay Protocol](#)

## Other Formats

APC Mouse IgG2a, κ Isotype Ctrl, Biotin Mouse IgG2a, κ Isotype Ctrl, FITC Mouse IgG2a, κ Isotype Ctrl, PE Mouse IgG2a, κ Isotype Ctrl, PE/Cyanine5 Mouse IgG2a, κ Isotype Ctrl, Purified Mouse IgG2a, κ Isotype Ctrl, APC/Cyanine7 Mouse IgG2a, κ Isotype Ctrl, PE/Cyanine7 Mouse IgG2a, κ Isotype Ctrl, Alexa Fluor® 647 Mouse IgG2a, κ Isotype Ctrl, Alexa Fluor® 488 Mouse IgG2a, κ Isotype Ctrl, Pacific Blue™ Mouse IgG2a, κ Isotype Ctrl, Alexa Fluor® 488 Mouse IgG2a, κ Isotype Ctrl (ICFC), Alexa Fluor® 647 Mouse IgG2a, κ Isotype Ctrl (ICFC), FITC Mouse IgG2a, κ Isotype Ctrl (ICFC), PE Mouse IgG2a, κ Isotype Ctrl (ICFC), APC Mouse IgG2a, κ Isotype Ctrl (ICFC), FITC Mouse IgG2a, κ Isotype Ctrl (FC), PE Mouse IgG2a, κ Isotype Ctrl (FC), APC Mouse IgG2a, κ Isotype Ctrl (FC), Brilliant Violet 605™ Mouse IgG2a, κ Isotype Ctrl, Alexa Fluor® 700 Mouse IgG2a, κ Isotype Ctrl, PerCP Mouse IgG2a, κ Isotype Ctrl, PerCP/Cyanine5.5 Mouse IgG2a, κ Isotype Ctrl, Brilliant Violet 421™ Mouse IgG2a, κ Isotype Ctrl, Brilliant Violet 570™ Mouse IgG2a, κ Isotype Ctrl, Ultra-LEAF™ Purified Mouse IgG2a, κ Isotype Ctrl, Brilliant Violet 510™ Mouse IgG2a, κ Isotype Ctrl, Brilliant Violet 650™ Mouse IgG2a, κ Isotype Ctrl, Brilliant Violet 711™ Mouse IgG2a, κ Isotype Ctrl, Brilliant Violet 785™ Mouse IgG2a, κ Isotype Ctrl, PE/Dazzle™ 594 Mouse IgG2a, κ Isotype Ctrl, Alexa Fluor® 594 Mouse IgG2a, κ Isotype Ctrl, FITC Mouse IgG2a, κ Isotype Ctrl, APC/Fire™ 750 Mouse IgG2a, κ Isotype Ctrl, TotalSeq™-A0091 Mouse IgG2a, κ Isotype Ctrl, Go-ChIP-Grade™ Purified Mouse IgG2a, κ Isotype Ctrl, TotalSeq™-B0091 Mouse IgG2a, κ Isotype Ctrl, TotalSeq™-C0091 Mouse IgG2a, κ Isotype Ctrl, KIRAVIA Blue 520™ Mouse IgG2a, κ Isotype Ctrl, Spark Blue™ 550 Mouse IgG2a, κ Isotype Ctrl, Spark NIR™ 685 Mouse IgG2a, κ Isotype Ctrl, Spark Violet™ 538 Mouse IgG2a, κ Isotype Ctrl, Spark YG™ 581 Mouse IgG2a, κ Isotype Ctrl, TotalSeq™-D0091 Mouse IgG2a, κ Isotype Ctrl, Spark YG™ 593 Mouse IgG2a, κ Isotype Ctrl, GMP PE Mouse IgG2a, κ Isotype Ctrl, GMP FITC Mouse IgG2a, κ Isotype Ctrl, GMP APC Mouse IgG2a, κ Isotype Ctrl, GMP PE/Dazzle™ 594 Mouse IgG2a, κ Isotype Ctrl

## Product Data

### Go-ChIP-Grade™ Purified Mouse IgG2a, κ Isotype Control Antibody



Chromatin Immunoprecipitations (ChIP) were performed with cross-linked chromatin samples from  $4 \times 10^6$  HeLa cells with either A) 1:300 dilution of Go-ChIP-Grade™ Purified anti-RNA Polymerase II RPB1 antibody (clone 8WG16, Cat. No. 664911) or B) equal amount of Go-ChIP-Grade™ purified mouse IgG2a, κ isotype control antibody (clone MOPC-173, Cat. No. 400287) by using Go-ChIP-Grade™ Protein G Enzymatic Kit (Cat. No. 699904). The enriched DNA was purified and quantified by real-time qPCR using primers targeting human GAPDH gene region and α-Satellite repeats. The amount of immunoprecipitated DNA in each sample is represented as signal relative to total amount of input chromatin.

\*These products may be covered by one or more Limited Use Label Licenses (see the BioLegend Catalog or our website, [www.biolegend.com/ordering#license](http://www.biolegend.com/ordering#license)). BioLegend products may not be transferred to third parties, resold, modified for resale, or used to manufacture commercial products, reverse engineer functionally similar materials, or to provide a service to third parties without written approval of BioLegend. By use of these products you accept the terms and conditions of all applicable Limited Use Label Licenses. Unless otherwise indicated, these products are for research use only and are not intended for human or animal diagnostic, therapeutic or commercial use.

8999 BioLegend Way, San Diego, CA 92121 [www.biolegend.com](http://www.biolegend.com)  
Toll-Free Phone: 1-877-Bio-Legend (246-5343) Phone: (858) 768-5800 Fax: (877) 455-9587