

RBC Lysis/Fixation Solution (10X)

| | |
|--------------------------|--|
| Catalog# / Size | 422401 / 50 mL |
| Regulatory Status | RUO |
| Other Names | Red blood cell lysing solution |
| Description | BioLegend RBC Lysis/Fixation Solution has been designed and optimized for one-step lysing of red blood cells (RBCs) and fixation of the remaining blood elements (such as leukocytes) following immunofluorescent staining with fluorochrome-conjugated antibodies. It can be used for either lyse/wash or lyse/no wash immunofluorescent staining procedures. This solution is supplied as a 10X concentrate. Dilute to 1X working solution with room temperature dI H ₂ O prior to use. |

Product Details

| | |
|-------------------------------|--|
| Formulation | This RBC Lysis/Fixation Solution is supplied as a 10X solution and should be diluted to 1X in room temperature deionized water. |
| Preparation | The pH of the 1X solution should fall within the range of pH 7.1 - 7.4. Adjust the pH if necessary. Warm the 1X solution to room temperature prior to use. |
| Storage & Handling | Store RBC lysis buffer between 2°C and 8°C. |
| Application | FC - Quality tested |

Recommended Usage

Whole Blood Lyse/Wash Procedure:

1. Prepare 1X RBC Lysis/Fixation solution by diluting 1 part of BioLegend RBC Lysis/Fixation solution with 9 parts of **room temperature** dI H₂O.
2. Mix 100 µl of whole blood with fluorochrome-conjugated antibody.
3. Incubate at room temperature, in the dark, for 20 minutes.
4. Add 2.0 mL 1X RBC Lysis/Fixation solution, gently mixing each tube immediately.
5. Incubate at room temperature, in the dark, for 15 minutes.
6. Centrifuge at 350Xg for five minutes. Discard supernatant.
7. Add 2 mL BioLegend Cell Staining Buffer (Cat No 420201).
8. Centrifuge at 350Xg for five minutes. Discard supernatant.
9. Resuspend cell pellet in 0.3-0.5 mL Cell Staining Buffer.
10. Analyze cells immediately by flow cytometry or store at 4°C, in the dark, for no longer than 12 hours.

Whole Blood Lyse/No Wash Procedure:

1. Prepare 1X RBC Lysis/Fixation solution by diluting 1 part of BioLegend RBC Lysis/Fixation solution with 9 parts **room temperature** dI H₂O.
2. Mix 50 µl of whole blood with fluorochrome-conjugated antibody.
3. Incubate at room temperature, in the dark, for 20 minutes.
4. Add 0.45 mL 1X RBC Lysis/Fixation solution, gently mixing each tube immediately.
5. Incubate at room temperature, in the dark, for 15 minutes.
6. Analyze samples by flow cytometry.

| | |
|--------------------------|--|
| Application Notes | The 1X Lysis/Fixation solution can be used within 1 month from the date of preparation. It can be stored at room temperature or between 2°C and 8°C. |
|--------------------------|--|

Application References

1. Horvath P, *et al.* 2012. *J Infect Dis.* [PubMed](#)

(PubMed link indicates BioLegend citation)

Product Citations

1. Kusner L, *et al.* 2014. *PLoS One.* 9:102231. [PubMed](#)
2. Curry A, *et al.* 2017. *PLoS One.* 12(2):e0171586. [PubMed](#)
3. Nerdal P, *et al.* 2016. *J Immunol.* 197: 3059 - 3068. [PubMed](#)
4. Lee J, *et al.* 2017. *Biomaterials.* 10.1016/j.biomaterials.2017.07.014. [PubMed](#)
5. Horváth P, *et al.* 2012. *J Infect Dis.* 205:923. [PubMed](#)
6. Camponova P, *et al.* 2017. *Can J Physiol Pharmacol.* 10.1139/cjpp-2016-0710. [PubMed](#)

7. Foster G, *et al.* 2015. J Immunol. 195: 5380 - 5392. [PubMed](#)
8. Mackroth M, *et al.* 2016. PLoS Pathog. 12:e1005909. [PubMed](#)
9. Javed A, *et al.* 2015. PLoS One. 10: 0142086. [PubMed](#)

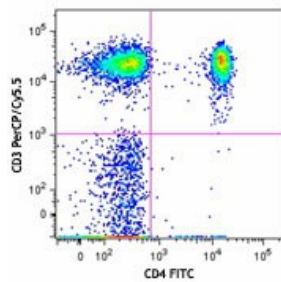
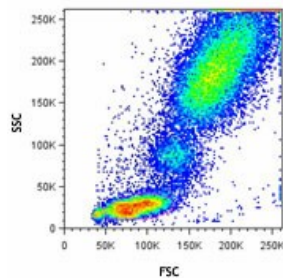
Antigen Details

Gene ID NA

Related Protocols

[Cell Surface Flow Cytometry Staining Protocol](#)

Product Data



Human peripheral blood cells were stained with anti-human CD3 PerCP/Cy5.5 and anti-human CD4 FITC; red blood cells were lysed with BioLegend RBC Lysis/Fixation Solution.

For research use only. Not for diagnostic use. Not for resale. BioLegend will not be held responsible for patent infringement or other violations that may occur with the use of our products.

*These products may be covered by one or more Limited Use Label Licenses (see the BioLegend Catalog or our website, www.biolegend.com/ordering#license). BioLegend products may not be transferred to third parties, resold, modified for resale, or used to manufacture commercial products, reverse engineer functionally similar materials, or to provide a service to third parties without written approval of BioLegend. By use of these products you accept the terms and conditions of all applicable Limited Use Label Licenses. Unless otherwise indicated, these products are for research use only and are not intended for human or animal diagnostic, therapeutic or commercial use.

8999 BioLegend Way, San Diego, CA 92121 www.biolegend.com
Toll-Free Phone: 1-877-Bio-Legend (246-5343) Phone: (858) 768-5800 Fax: (877) 455-9587