

Spark Blue™ 550 anti-mouse CD11c Antibody

| | |
|--------------------------|---|
| Catalog# / Size | 117365 / 25 µg 117366 / 100 µg |
| Clone | N418 |
| Regulatory Status | RUO |
| Other Names | αX integrin, integrin αX chain, CR4, p150, ITGAX |
| Isotype | Armenian Hamster IgG |
| Description | CD11c is a 150 kD glycoprotein also known as αX integrin, CR4, and p150. CD11c forms a αXβ2 heterodimer with β2 integrin (CD18). It is primarily expressed on dendritic cells, NK cells, a subset of intestinal intraepithelial lymphocytes (IEL), and some activated T cells. The αXβ2 integrin plays an important role in cell-cell contact by binding its ligands: iC3b, fibrinogen, and CD54. |

Product Details

| | |
|---|---|
| Verified Reactivity | Mouse |
| Antibody Type | Monoclonal |
| Host Species | Armenian Hamster |
| Immunogen | Mouse spleen dendritic cells |
| Formulation | Phosphate-buffered solution, pH 7.2, containing 0.09% sodium azide |
| Preparation | The antibody was purified by affinity chromatography and conjugated with Spark Blue™ 550 under optimal conditions. |
| Concentration | 0.5 mg/mL |
| Storage & Handling | The antibody solution should be stored undiluted between 2°C and 8°C, and protected from prolonged exposure to light. Do not freeze. |
| Application | FC - Quality tested |
| Recommended Usage | Each lot of this antibody is quality control tested by immunofluorescent staining with flow cytometric analysis . For flow cytometric staining, the suggested use of this reagent is ≤ 0.25 µg per million cells in 100 µL volume. It is recommended that the reagent be titrated for optimal performance for each application. * Spark Blue™ 550 has a maximum excitation of 516 nm and a maximum emission of 540 nm. |
| Excitation Laser | Blue Laser (488 nm) |
| Application Notes | Additional reported applications (for the relevant formats) include: immunoprecipitation ³ , immunohistochemical staining of acetone-fixed frozen sections ³ , immunofluorescence microscopy ^{5,9} (Alexa Fluor® 488 conjugated N418 was used for IHC in frozen sections ¹⁰), and spatial biology (IBEX) ^{22,23} . |
| Application References | <ol style="list-style-type: none"> Granucci F, <i>et al.</i> 1997. <i>J. Immunol.</i> 159:1794. Stokes RW, <i>et al.</i> 1998. <i>J. Immunol.</i> 160:5514. Metlay JP, <i>et al.</i> 1990. <i>J. Exp. Med.</i> 171:1753. (IHC, IP) Ma XT, <i>et al.</i> 2006. <i>Cancer Research</i> 66:1169. Chin RK, <i>et al.</i> 2006. <i>J. Immunol.</i> 177:290. (IF) Cervantes-Barragan L, <i>et al.</i> 2007. <i>Blood</i> 109:1131. (FC) PubMed Turnquist HR, <i>et al.</i> 2007. <i>J. Immunol.</i> 178:7018. (FC) PubMed Benson MJ, <i>et al.</i> 2007. <i>J. Exp. Med.</i> doi:10.1084/jem.20070719. (FC) PubMed You Y, <i>et al.</i> 2009. <i>J. Immunol.</i> 182:7343. (IF) PubMed Roland CL, <i>et al.</i> 2009. <i>Mol. Cancer Res.</i> 8:1761. (IHC, FC) PubMed Wikstrom M, <i>et al.</i> 2006. <i>J. Immunol.</i> 177:913. PubMed Pericolini E, <i>et al.</i> 2008. <i>J. Leukocyte Biol.</i> 83:1286. PubMed |
| (PubMed link indicates BioLegend citation) | |

13. Randall LM, *et al.* 2008. *Infect. Immun.* 76:3312. [PubMed](#)
14. Fahlen-Yrild L, *et al.* 2009. *J. Immunol.* 183:5032. [PubMed](#)
15. Osterholzer JJ, *et al.* 2009. *J. Immunol.* 183:8044. [PubMed](#)
16. Bankoti J, *et al.* 2010. *Toxicol. Sci.* 115:422. (FC) [PubMed](#)
17. Eisenach PA, *et al.* 2010. *J Cell Sci.* 123:4182. [PubMed](#)
18. Leppin K, *et al.* 2014. *Invest. Ophthalmol. Vis. Sci.* 55:3603. [PubMed](#)
19. Sakai F, *et al.* 2014. *PLoS One.* 9:105370. [PubMed](#)
20. Gibbins JD, *et al.* 2014. *Blood.* 124:2953. [PubMed](#)
21. White CE, *et al.* 2015. *J Immunol.* 194:697. [PubMed](#)
22. Lu X, *et al.* 2015. *J Immunol.* 194:2011. [PubMed](#)
23. Radtke AJ, *et al.* 2020. *Proc Natl Acad Sci U S A.* 117:33455-65. (SB) [PubMed](#)
24. Radtke AJ, *et al.* 2022. *Nat Protoc.* 17:378-401. (SB) [PubMed](#)

RRID AB_2860633 (BioLegend Cat. No. 117365)
 AB_2860634 (BioLegend Cat. No. 117366)

Antigen Details

| | |
|---------------------------|--|
| Structure | Integrin α -chain, associates with integrin β_2 (CD18), 150 kD |
| Distribution | Dendritic cells, NK cells, intestinal intraepithelial lymphocytes (IEL), some activated T cells |
| Function | Cellular adhesion |
| Ligand/Receptor | iC3b, fibrinogen |
| Cell Type | Dendritic cells, Epithelial cells, NK cells, T cells, Tregs |
| Biology Area | Cell Adhesion, Cell Biology, Costimulatory Molecules, Immunology, Innate Immunity, Neuroscience, Neuroscience Cell Markers |
| Molecular Family | Adhesion Molecules, CD Molecules |
| Antigen References | <ol style="list-style-type: none"> 1. Barclay A, <i>et al.</i> 1997. <i>The Leukocyte Antigen Facts Book</i> Academic Press. 2. Springer TA. 1994. <i>Cell</i> 76:301. 3. Lopez-Rodriguez C, <i>et al.</i> 1996. <i>J. Immunol.</i> 156:3780. |
| Gene ID | 16411 |

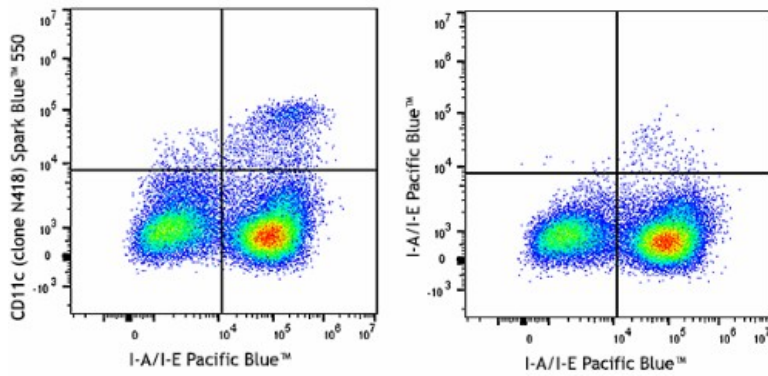
Related Protocols

[Cell Surface Flow Cytometry Staining Protocol](#)

Other Formats

APC anti-mouse CD11c, Biotin anti-mouse CD11c, FITC anti-mouse CD11c, PE anti-mouse CD11c, Purified anti-mouse CD11c, Alexa Fluor® 488 anti-mouse CD11c, Alexa Fluor® 647 anti-mouse CD11c, PE/Cyanine5 anti-mouse CD11c, PE/Cyanine7 anti-mouse CD11c, Brilliant Violet 605™ anti-mouse CD11c, Alexa Fluor® 700 anti-mouse CD11c, Pacific Blue™ anti-mouse CD11c, APC/Cyanine7 anti-mouse CD11c, PerCP/Cyanine5.5 anti-mouse CD11c, PerCP anti-mouse CD11c, Brilliant Violet 421™ anti-mouse CD11c, Brilliant Violet 570™ anti-mouse CD11c, Brilliant Violet 785™ anti-mouse CD11c, Brilliant Violet 510™ anti-mouse CD11c, Brilliant Violet 650™ anti-mouse CD11c, Purified anti-mouse CD11c (Maxpar® Ready), Alexa Fluor® 594 anti-mouse CD11c, PE/Dazzle™ 594 anti-mouse CD11c, Brilliant Violet 711™ anti-mouse CD11c, APC/Fire™ 750 anti-mouse CD11c, TotalSeq™-A0106 anti-mouse CD11c, Brilliant Violet 750™ anti-mouse CD11c, TotalSeq™-B0106 anti-mouse CD11c, TotalSeq™-C0106 anti-mouse CD11c, KIRAVIA Blue 520™ anti-mouse CD11c, Spark Blue™ 550 anti-mouse CD11c, Spark NIR™ 685 anti-mouse CD11c, Spark UV™ 387 anti-mouse CD11c, Spark Red™ 718 anti-mouse CD11c

Product Data



C57BL/6 mouse splenocytes stained with I-A/I-E (clone M5/14.15.2) Pacific Blue™ and CD11c (clone N418) Spark Blue™ 550 (left) or I-A/I-E Pacific Blue™ (right).

For research use only. Not for diagnostic use. Not for resale. BioLegend will not be held responsible for patent infringement or other violations that may occur with the use of our products.

*These products may be covered by one or more Limited Use Label Licenses (see the BioLegend Catalog or our website, www.biolegend.com/ordering#license). BioLegend products may not be transferred to third parties, resold, modified for resale, or used to manufacture commercial products, reverse engineer functionally similar materials, or to provide a service to third parties without written approval of BioLegend. By use of these products you accept the terms and conditions of all applicable Limited Use Label Licenses. Unless otherwise indicated, these products are for research use only and are not intended for human or animal diagnostic, therapeutic or commercial use.

8999 BioLegend Way, San Diego, CA 92121 www.biolegend.com
 Toll-Free Phone: 1-877-Bio-Legend (246-5343) Phone: (858) 768-5800 Fax: (877) 455-9587