

## Alexa Fluor<sup>®</sup> 647 anti-human Ig light chain $\lambda$ Antibody

<b>Catalog# / Size</b>	316614 / 100 tests
<b>Clone</b>	MHL-38
<b>Regulatory Status</b>	RUO
<b>Other Names</b>	Immunoglobulin light chain lambda
<b>Isotype</b>	Mouse IgG2a, $\kappa$
<b>Description</b>	The MHL-38 antibody reacts with both soluble and membrane human immunoglobulin light chain lambda ( $\lambda$ ). It does not react with human immunoglobulin light chain kappa ( $\kappa$ ) or heavy chains. The MHL-38 antibody can be used as primary or secondary reagent for immunofluorescent staining or ELISA analysis.

### Product Details

---

<b>Verified Reactivity</b>	Human
<b>Reported Reactivity</b>	Baboon, Cynomolgus, Rhesus
<b>Antibody Type</b>	Monoclonal
<b>Host Species</b>	Mouse
<b>Immunogen</b>	Human Ig cocktail
<b>Formulation</b>	Phosphate-buffered solution, pH 7.2, containing 0.09% sodium azide and BSA (origin USA)
<b>Preparation</b>	The antibody was purified by affinity chromatography and conjugated with Alexa Fluor <sup>®</sup> 647 under optimal conditions.
<b>Concentration</b>	Lot-specific (to obtain lot-specific concentration, please enter the lot number in our <a href="#">Concentration and Expiration Lookup</a> or <a href="#">Certificate of Analysis</a> online tools.)
<b>Storage &amp; Handling</b>	The antibody solution should be stored undiluted between 2°C and 8°C, and protected from prolonged exposure to light. <b>Do not freeze.</b>
<b>Application</b>	<a href="#">FC - Quality tested</a>
<b>Recommended Usage</b>	Each lot of this antibody is quality control tested by <a href="#">immunofluorescent staining with flow cytometric analysis</a> . For flow cytometric staining, the suggested use of this reagent is 5 $\mu$ l per million cells in 100 $\mu$ l staining volume or 5 $\mu$ l per 100 $\mu$ l of whole blood.  * Alexa Fluor <sup>®</sup> 647 has a maximum emission of 668 nm when it is excited at 633nm / 635nm.  Alexa Fluor <sup>®</sup> and Pacific Blue™ are trademarks of Life Technologies Corporation.  <a href="#">View full statement regarding label licenses</a>
<b>Excitation Laser</b>	Red Laser (633 nm)
<b>Application Notes</b>	Clone MHL-38 is not compatible with Human TruStain FcX (Fc Receptor Blocking Solution) (Cat. No. 422301 & 422302).
<b>RRID</b>	AB_493633 (BioLegend Cat. No. 316614)

### Antigen Details

---

<b>Structure</b>	Ig family
<b>Distribution</b>	B cells

<b>Cell Type</b>	B cells
<b>Biology Area</b>	Immunology
<b>Gene ID</b>	<a href="#">3535</a>

## Related Protocols

---

[Cell Surface Flow Cytometry Staining Protocol](#)

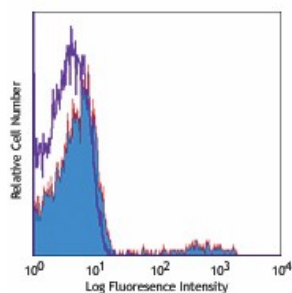
## Other Formats

---

Purified anti-human Ig light chain  $\lambda$ , Biotin anti-human Ig light chain  $\lambda$ , FITC anti-human Ig light chain  $\lambda$ , PE anti-human Ig light chain  $\lambda$ , APC anti-human Ig light chain  $\lambda$ , Alexa Fluor® 488 anti-human Ig light chain  $\lambda$ , Alexa Fluor® 647 anti-human Ig light chain  $\lambda$ , Pacific Blue™ anti-human Ig light chain  $\lambda$ , PerCP/Cyanine5.5 anti-human Ig light chain  $\lambda$ , Purified anti-human Ig light chain  $\lambda$  (Maxpar® Ready), PE/Dazzle™ 594 anti-human Ig light chain  $\lambda$ , PE/Cyanine7 anti-human Ig light chain  $\lambda$ , APC/Fire™ 750 anti-human Ig light chain  $\lambda$ , TotalSeq™-A0898 anti-human Ig light chain  $\lambda$ , TotalSeq™-C0898 anti-human Ig light chain  $\lambda$ , Alexa Fluor® 700 anti-human Ig light chain  $\lambda$ , TotalSeq™-B0898 anti-human Ig light chain  $\lambda$ , APC/Cyanine7 anti-human Ig light chain  $\lambda$ , TotalSeq™-D0898 anti-human Ig light chain  $\lambda$

## Product Data

---



Human peripheral blood lymphocytes stained with MHL-38 Alexa Fluor® 647

For research use only. Not for diagnostic use. Not for resale. BioLegend will not be held responsible for patent infringement or other violations that may occur with the use of our products.

\*These products may be covered by one or more Limited Use Label Licenses (see the BioLegend Catalog or our website, [www.biolegend.com/ordering#license](http://www.biolegend.com/ordering#license)). BioLegend products may not be transferred to third parties, resold, modified for resale, or used to manufacture commercial products, reverse engineer functionally similar materials, or to provide a service to third parties without written approval of BioLegend. By use of these products you accept the terms and conditions of all applicable Limited Use Label Licenses. Unless otherwise indicated, these products are for research use only and are not intended for human or animal diagnostic, therapeutic or commercial use.

BioLegend Inc., 8999 BioLegend Way, San Diego, CA 92121 [www.biolegend.com](http://www.biolegend.com)  
Toll-Free Phone: 1-877-Bio-Legend (246-5343) Phone: (858) 768-5800 Fax: (877) 455-9587