

Alexa Fluor® 700 Rat IgG2b, κ Isotype Ctrl Antibody

Catalog# / Size	400628 / 100 µg
Clone	RTK4530
Regulatory Status	RUO
Isotype	Rat IgG2b, κ
Description	The isotype of RTK4530 immunoglobulin is rat IgG2b, κ. This antibody was chosen as an isotype control after screening on a variety of resting, activated, live, and fixed mouse, rat and human tissues.

Product Details

Antibody Type	Monoclonal
Host Species	Rat
Immunogen	Trinitrophenol + KLH
Formulation	Phosphate-buffered solution, pH 7.2, containing 0.09% sodium azide.
Preparation	The antibody was purified by affinity chromatography and conjugated with Alexa Fluor® 700 under optimal conditions.
Concentration	0.5 mg/ml
Storage & Handling	The antibody solution should be stored undiluted between 2°C and 8°C, and protected from prolonged exposure to light. Do not freeze.
Application	FC - Quality tested ICFC - Verified
Recommended Usage	<p>This reagent is developed for immunofluorescent staining for flow cytometric analysis as negative control. Use at concentrations comparable to those of the specific antibody of interest. It is highly recommended that the reagent be titrated for optimal performance for each application.</p> <p>* Alexa Fluor® 700 has a maximum emission of 719 nm when it is excited at 633nm / 635nm. Prior to using Alexa Fluor® 700 conjugate for flow cytometric analysis, please verify your flow cytometer's capability of exciting and detecting the fluorochrome.</p> <p>Alexa Fluor® and Pacific Blue™ are trademarks of Life Technologies Corporation.</p> <p>View full statement regarding label licenses</p>
Excitation Laser	Red Laser (633 nm)
Application Notes	The RTK4530 immunoglobulin is useful as an isotype-matched control (for the relevant formats) for Western blotting, immunoprecipitation, immunohistochemistry, functional assay, and immunofluorescence microscopy. The Ultra-LEAF™ purified antibody (Endotoxin < 0.01 EU/µg, Azide-Free, 0.2 µm filtered) is recommended for functional assays (Cat. No. 400643, 400644, 400671, 400672, 400675, and 400676) as negative control.
Application References	<ol style="list-style-type: none"> 1. Cervantes-Barragan L, <i>et al.</i> 2007. <i>Blood</i> 109:1131. 2. Zeiser R, <i>et al.</i> 2007. <i>Blood</i> 109:2225. 3. Sasaki K, <i>et al.</i> 2008. <i>J. Immunol.</i> 181:104. PubMed 4. Duan J, <i>et al.</i> 2008. <i>P. Natl. Acad. Sci. USA</i> 105:5183. PubMed 5. Yi H, <i>et al.</i> 2009. <i>Blood</i> 113:5819. PubMed 6. Schafeer JS, <i>et al.</i> 2010. <i>J. Leukocyte Biol.</i> 87:301. PubMed 7. Lei GS, <i>et al.</i> 2015. <i>Infect Immun.</i> 83:572. PubMed 8. Richards J, <i>et al.</i> 2015. <i>Mol Cell Cardiol.</i> 79:21. PubMed
(PubMed link indicates BioLegend citation)	
Product Citations	<ol style="list-style-type: none"> 1. Suzuki S, <i>et al.</i> 2021. <i>Cell Reports.</i> 34(7):108752. PubMed

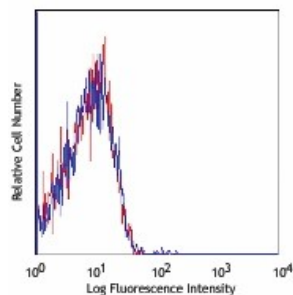
Antigen Details

Structure	The antibody was purified by affinity chromatography and conjugated with APC/Fire™ 810 under optimal conditions.
Gene ID	NA

Other Formats

APC Rat IgG2b, κ Isotype Ctrl, Biotin Rat IgG2b, κ Isotype Ctrl, FITC Rat IgG2b, κ Isotype Ctrl, PE Rat IgG2b, κ Isotype Ctrl, PE/Cyanine5 Rat IgG2b, κ Isotype Ctrl, Purified Rat IgG2b, κ Isotype Ctrl, PE/Cyanine7 Rat IgG2b, κ Isotype Ctrl, APC/Cyanine7 Rat IgG2b, κ Isotype Ctrl, Alexa Fluor® 647 Rat IgG2b, κ Isotype Ctrl, Alexa Fluor® 488 Rat IgG2b, κ Isotype Ctrl, Pacific Blue™ Rat IgG2b, κ Isotype Ctrl, Alexa Fluor® 700 Rat IgG2b, κ Isotype Ctrl, PerCP Rat IgG2b, κ Isotype Ctrl, PerCP/Cyanine5.5 Rat IgG2b, κ Isotype Ctrl, Brilliant Violet 421™ Rat IgG2b, κ Isotype Ctrl, Brilliant Violet 570™ Rat IgG2b, κ Isotype Ctrl, Ultra-LEAF™ Purified Rat IgG2b, κ Isotype Ctrl, Brilliant Violet 510™ Rat IgG2b, κ Isotype Ctrl, Brilliant Violet 605™ Rat IgG2b, κ Isotype Ctrl, Brilliant Violet 785™ Rat IgG2b, κ Isotype Ctrl, Brilliant Violet 650™ Rat IgG2b, κ Isotype Ctrl, Brilliant Violet 711™ Rat IgG2b, κ Isotype Ctrl, PE/Dazzle™ 594 Rat IgG2b, κ Isotype Ctrl, Alexa Fluor® 594 Rat IgG2b, κ Isotype Ctrl, GolnVivo™ Purified Rat IgG2b, κ Isotype Ctrl, APC/Fire™ 750 Rat IgG2b, κ Isotype Ctrl, TotalSeq™-A0095 Rat IgG2b, κ Isotype Ctrl, TotalSeq™-C0095 Rat IgG2b, κ Isotype Ctrl, KIRAVIA Blue 520™ Rat IgG2b, κ Isotype Ctrl, Spark Blue™ 550 Rat IgG2b, κ Isotype Ctrl, PE/Fire™ 640 Rat IgG2b, κ Isotype Ctrl, APC/Fire™ 810 Rat IgG2b, κ Isotype Ctrl, PE/Fire™ 700 Rat IgG2b, κ Isotype Ctrl, TotalSeq™-B0095 Rat IgG2b, κ Isotype Ctrl

Product Data



CD57BL/6 mouse splenocytes stained with RTK4530 Alexa Fluor® 700

For research use only. Not for diagnostic use. Not for resale. BioLegend will not be held responsible for patent infringement or other violations that may occur with the use of our products.

*These products may be covered by one or more Limited Use Label Licenses (see the BioLegend Catalog or our website, www.biolegend.com/ordering#license). BioLegend products may not be transferred to third parties, resold, modified for resale, or used to manufacture commercial products, reverse engineer functionally similar materials, or to provide a service to third parties without written approval of BioLegend. By use of these products you accept the terms and conditions of all applicable Limited Use Label Licenses. Unless otherwise indicated, these products are for research use only and are not intended for human or animal diagnostic, therapeutic or commercial use.

BioLegend Inc., 8999 BioLegend Way, San Diego, CA 92121 www.biolegend.com
Toll-Free Phone: 1-877-Bio-Legend (246-5343) Phone: (858) 768-5800 Fax: (877) 455-9587