

APC anti-mouse Folate Receptor β (FR- β) Antibody

Catalog# / Size	153305 / 25 μ g 153306 / 100 μ g
Clone	10/FR2
Regulatory Status	RUO
Other Names	FR- β
Isotype	Rat IgG2a, κ
Description	Folate receptor beta (FR- β) is a member of a family of folate binding receptors that have diverse structural identities but mediate transport of folates into cells. FR- β is a GPI-anchored protein with high affinity for folic acid. It is postulated that this receptor function as folate scavengers when folate supply is low or rapid cell growth requires elevated uptake of folate for methylation reactions including DNA biosynthesis. Although this protein was originally thought to be specific to placenta, it can also exist in other tissues, and it may play a role in the transport of methotrexate in synovial macrophages in rheumatoid arthritis patients.

Product Details

Verified Reactivity	Mouse
Antibody Type	Monoclonal
Host Species	Rat
Immunogen	Mouse Folate receptor β transfected cells
Formulation	Phosphate-buffered solution, pH 7.2, containing 0.09% sodium azide.
Preparation	The antibody was purified by affinity chromatography and conjugated with APC under optimal conditions.
Concentration	0.2 mg/ml
Storage & Handling	The antibody solution should be stored undiluted between 2°C and 8°C, and protected from prolonged exposure to light. Do not freeze.
Application	FC - Quality tested
Recommended Usage	Each lot of this antibody is quality control tested by immunofluorescent staining with flow cytometric analysis . For flow cytometric staining, the suggested use of this reagent is ≤ 0.5 μ g per million cells in 100 μ l volume. It is recommended that the reagent be titrated for optimal performance for each application.
Excitation Laser	Red Laser (633 nm)
Application References	1. Nagai T, <i>et al.</i> 2009. <i>Cancer Immunol Immunother.</i> 1577-86.
(PubMed link indicates BioLegend citation)	
Product Citations	1. Rodriguez-García A, <i>et al.</i> 2021. <i>Nat Commun.</i> 12:877. PubMed 2. Zhang F, <i>et al.</i> 2020. <i>EMBO Mol Med.</i> e12034:12. PubMed 3. Sharma A, <i>et al.</i> 2020. <i>Cell.</i> 183(2):377-394.e21. PubMed 4. Roy AG, <i>et al.</i> 2021. <i>Int J Mol Sci.</i> 22:. PubMed 5. Wallace-Povirk A, <i>et al.</i> 2022. <i>Sci Rep.</i> 12:11346. PubMed
RRID	AB_2721312 (BioLegend Cat. No. 153305) AB_2721313 (BioLegend Cat. No. 153306)

Antigen Details

Structure	30 kD, seven disulfide bonds
Distribution	Placenta, monocytes, tissue resident macrophages
Function	Transport of folate into cells
Ligand/Receptor	Folic Acid
Cell Type	Macrophages, Monocytes
Antigen References	1. Elwood PC, 1989, <i>J Biol Chem</i> , 264:14893. 2. Shen F, et al, 1994, <i>Biochemistry</i> , 8;33:1209. 3. Yi YS, 2016, <i>Immune Netw</i> ,16:337.
Gene ID	14276

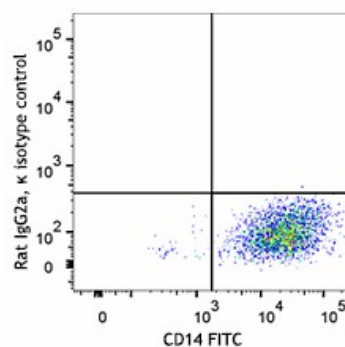
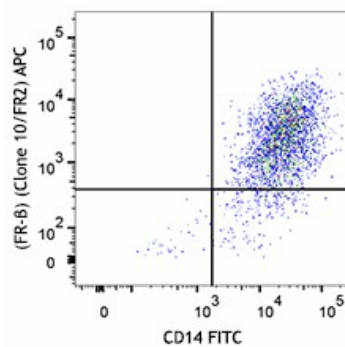
Related Protocols

[Cell Surface Flow Cytometry Staining Protocol](#)

Other Formats

Purified anti-mouse Folate Receptor β (FR- β), APC anti-mouse Folate Receptor β (FR- β), PE anti-mouse Folate Receptor β (FR- β), TotalSeq™-A0564 anti-mouse Folate Receptor β (FR- β), TotalSeq™-B0564 anti-mouse Folate Receptor β (FR- β) Antibody

Product Data



Thioglycolate elicited BALB/c mouse peritoneal macrophages were stained with CD14 FITC and with anti-mouse Folate Receptor β (clone 10/FR2) APC (top) or APC Rat IgG2a, κ isotype control (bottom).

For research use only. Not for diagnostic use. Not for resale. BioLegend will not be held responsible for patent infringement or other violations that may occur with the use of our products.

*These products may be covered by one or more Limited Use Label Licenses (see the BioLegend Catalog or our website, www.biolegend.com/ordering#license). BioLegend products may not be transferred to third parties, resold, modified for resale, or used to manufacture commercial products, reverse engineer functionally similar materials, or to provide a service to third parties without written approval of BioLegend. By use of these products you accept the terms and conditions of all

applicable Limited Use Label Licenses. Unless otherwise indicated, these products are for research use only and are not intended for human or animal diagnostic, therapeutic or commercial use.

BioLegend Inc., 8999 BioLegend Way, San Diego, CA 92121 www.biolegend.com
Toll-Free Phone: 1-877-Bio-Legend (246-5343) Phone: (858) 768-5800 Fax: (877) 455-9587