

## APC/Fire™ 750 anti-human CD14 Antibody

<b>Catalog# / Size</b>	301853 / 25 tests 301854 / 100 tests
<b>Clone</b>	M5E2
<b>Regulatory Status</b>	RUO
<b>Workshop</b>	III 329
<b>Other Names</b>	LPS receptor
<b>Isotype</b>	Mouse IgG2a, κ
<b>Description</b>	CD14 is a 53-55 kD glycosylphosphatidylinositol (GPI)-linked membrane glycoprotein also known as LPS receptor. CD14 is expressed at high levels on monocytes and macrophages, and at lower levels on granulocytes. Some dendritic cell populations such as interfollicular dendritic cells, reticular dendritic cells, and Langerhans cells have also been reported to express CD14. As a high-affinity receptor for LPS, CD14 is involved in the clearance of gram-negative pathogens, and in the upregulation of adhesion molecules and expression of cytokines in monocytes and neutrophils.

### Product Details

---

<b>Verified Reactivity</b>	Human, Cynomolgus, Rhesus
<b>Reported Reactivity</b>	African Green, Capuchin Monkey, Cow, Chimpanzee, Common Marmoset, Cotton-topped Tamarin, Dog, Pigtailed Macaque, Squirrel Monkey
<b>Antibody Type</b>	Monoclonal
<b>Host Species</b>	Mouse
<b>Immunogen</b>	Full-length human CD14 protein
<b>Formulation</b>	Phosphate-buffered solution, pH 7.2, containing 0.09% sodium azide and BSA (origin USA)
<b>Preparation</b>	The antibody was purified by affinity chromatography and conjugated with APC/Fire™ 750 under optimal conditions.
<b>Concentration</b>	Lot-specific (to obtain lot-specific concentration, please enter the lot number in our <a href="#">Concentration and Expiration Lookup</a> or <a href="#">Certificate of Analysis</a> online tools.)
<b>Storage &amp; Handling</b>	The antibody solution should be stored undiluted between 2°C and 8°C, and protected from prolonged exposure to light. <b>Do not freeze.</b>
<b>Application</b>	<a href="#">FC - Quality tested</a>
<b>Recommended Usage</b>	Each lot of this antibody is quality control tested by <a href="#">immunofluorescent staining with flow cytometric analysis</a> . For flow cytometric staining, the suggested use of this reagent is 5 µl per million cells in 100 µl staining volume or 5 µl per 100 µl of whole blood.  * APC/Fire™ 750 has a maximum excitation of 650 nm and a maximum emission of 787 nm.
<b>Application Notes</b>	The M5E2 antibody inhibits monocyte activation and cytokine production induced by LPS. Additional reported applications (for the relevant formats) include: immunohistochemical staining of acetone-fixed frozen sections, blocking of LPS stimulation <sup>4</sup> , and immunofluorescence microscopy <sup>5</sup> . Clone M5E2 is not recommended for immunohistochemical staining of formalin-fixed paraffin-embedded sections. The Ultra-LEAF™ purified antibody (Endotoxin < 0.01 EU/µg, Azide-Free, 0.2 µm filtered) is recommended for functional assays (Cat. No. 301861 and 301862).
<b>Application References</b>	1. McMichael A, <i>et al.</i> 1987. Leucocyte Typing III. Oxford University Press. New York. 2. Knapp W, <i>et al.</i> Eds. 1989. Leucocyte Typing IV. Oxford University Press. New York. (IHC-F) 3. Schlossman S, <i>et al.</i> Eds. 1995. Leucocyte Typing V. Oxford University Press. New York. 4. Power CP, <i>et al.</i> 2004. <i>J. Immunol.</i> 173:5229. (Block) 5. Williams KC, <i>et al.</i> 2001. <i>J. Exp. Med.</i> 193:905.
<b>(PubMed link indicates BioLegend citation)</b>	

6. Iwamoto S, et al. 2007. *J. Immunol.* 179:1449. (FC) [PubMed](#)
7. Santer DM, et al. 2010. *J. Immunol.* 485:4739. [PubMed](#)
8. Yoshino N, et al. 2000. *Exp. Anim. (Tokyo)* 49:97. (FC)
9. Zizzo G, et al. 2012. *J. Immunol.* 189:3508. [PubMed](#)
10. Stoeckius M, et al. 2017. *Nat. Methods.* 14:865. (PG)
11. Peterson VM, et al. 2017. *Nat. Biotechnol.* 35:936. (PG)

#### Product Citations

1. Johnson JK, et al. 2022. *Methods Mol Biol.* 2470:641. [PubMed](#)

#### RRID

AB\_2632659 (BioLegend Cat. No. 301853)  
 AB\_2632660 (BioLegend Cat. No. 301854)

## Antigen Details

<b>Structure</b>	GPI-linked membrane glycoprotein, 53-55 kD
<b>Distribution</b>	Monocytes, macrophages, granulocytes (low)
<b>Function</b>	LPS receptor, clearance of Gram-negative pathogens
<b>Ligand/Receptor</b>	LPS
<b>Cell Type</b>	Granulocytes, Macrophages, Monocytes, Neutrophils
<b>Biology Area</b>	Cell Biology, Immunology, Innate Immunity, Neuroinflammation, Neuroscience
<b>Molecular Family</b>	CD Molecules
<b>Antigen References</b>	<ol style="list-style-type: none"> <li>1. Stocks S, et al. 1990. <i>Biochem. J.</i> 268:275.</li> <li>2. Wright S, et al. 1990. <i>Science</i> 249:1434.</li> </ol>
<b>Gene ID</b>	<a href="#">929</a>

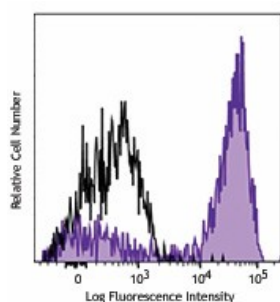
## Related Protocols

[Cell Surface Flow Cytometry Staining Protocol](#)

## Other Formats

APC anti-human CD14, FITC anti-human CD14, PE anti-human CD14, Purified anti-human CD14, PE/Cyanine7 anti-human CD14, Alexa Fluor® 488 anti-human CD14, Alexa Fluor® 647 anti-human CD14, Ultra-LEAF™ Purified anti-human CD14, Pacific Blue™ anti-human CD14, APC/Cyanine7 anti-human CD14, Alexa Fluor® 700 anti-human CD14, PerCP/Cyanine5.5 anti-human CD14, Biotin anti-human CD14, Brilliant Violet 421™ anti-human CD14, Brilliant Violet 570™ anti-human CD14, Brilliant Violet 605™ anti-human CD14, Brilliant Violet 650™ anti-human CD14, Brilliant Violet 711™ anti-human CD14, Brilliant Violet 785™ anti-human CD14, Brilliant Violet 510™ anti-human CD14, Purified anti-human CD14 (Maxpar® Ready), PerCP anti-human CD14, PE/Dazzle™ 594 anti-human CD14, APC/Fire™ 750 anti-human CD14, TotalSeq™-A0081 anti-human CD14, TotalSeq™-B0081 anti-human CD14, TotalSeq™-C0081 anti-human CD14, PE/Cyanine5 anti-human CD14, TotalSeq™-D0081 anti-human CD14, GMP FITC anti-human CD14, GMP APC anti-human CD14, GMP PE anti-human CD14, GMP Pacific Blue™ anti-human CD14

## Product Data



Human peripheral blood monocytes were stained with CD14 (clone M5E2) APC/Fire™ 750 (filled histogram) or mouse IgG2a, κ APC/Fire™ 750 isotype control (open histogram).

For research use only. Not for diagnostic use. Not for resale. BioLegend will not be held responsible for patent infringement or other violations that may occur with the use of our products.

\*These products may be covered by one or more Limited Use Label Licenses (see the BioLegend Catalog or our website, [www.biolegend.com/ordering#license](http://www.biolegend.com/ordering#license)). BioLegend products may not be transferred to third parties, resold, modified for resale, or used to manufacture commercial products, reverse engineer functionally similar materials, or to provide a service to third parties without written approval of BioLegend. By use of these products you accept the terms and conditions of all applicable Limited Use Label Licenses. Unless otherwise indicated, these products are for research use only and are not intended for human or animal diagnostic, therapeutic or commercial use.

BioLegend Inc., 8999 BioLegend Way, San Diego, CA 92121 [www.biolegend.com](http://www.biolegend.com)  
Toll-Free Phone: 1-877-Bio-Legend (246-5343) Phone: (858) 768-5800 Fax: (877) 455-9587