

APC/Fire™ 750 anti-human Ig light chain λ Antibody

Catalog# / Size	316625 / 100 tests
Clone	MHL-38
Regulatory Status	RUO
Other Names	Immunoglobulin light chain lambda
Isotype	Mouse IgG2a, κ
Description	The MHL-38 antibody reacts with both soluble and membrane human immunoglobulin light chain lambda (λ). It does not react with human immunoglobulin light chain kappa (κ) or heavy chains. The MHL-38 antibody can be used as primary or secondary reagent for immunofluorescent staining or ELISA analysis.

Product Details

Verified Reactivity	Human
Reported Reactivity	Baboon, Cynomolgus, Rhesus
Antibody Type	Monoclonal
Host Species	Mouse
Immunogen	Human Ig cocktail
Formulation	Phosphate-buffered solution, pH 7.2, containing 0.09% sodium azide and BSA (origin USA)
Preparation	The antibody was purified by affinity chromatography and conjugated with APC/Fire™ 750 under optimal conditions.
Concentration	Lot-specific (to obtain lot-specific concentration, please enter the lot number in our Concentration and Expiration Lookup or Certificate of Analysis online tools.)
Storage & Handling	The antibody solution should be stored undiluted between 2°C and 8°C, and protected from prolonged exposure to light. Do not freeze.
Application	FC - Quality tested
Recommended Usage	Each lot of this antibody is quality control tested by immunofluorescent staining with flow cytometric analysis . For flow cytometric staining, the suggested use of this reagent is 5 µl per million cells in 100 µl staining volume or 5 µl per 100 µl of whole blood. * APC/Fire™ 750 has a maximum excitation of 650 nm and a maximum emission of 787 nm.
Excitation Laser	Red Laser (633 nm)
Application Notes	Clone MHL-38 is not compatible with Human TruStain FcX (Fc Receptor Blocking Solution) (Cat. No. 422301 & 422302).
RRID	AB_2687265 (BioLegend Cat. No. 316625)

Antigen Details

Structure	Ig family
Distribution	B cells
Cell Type	B cells
Biology Area	Immunology

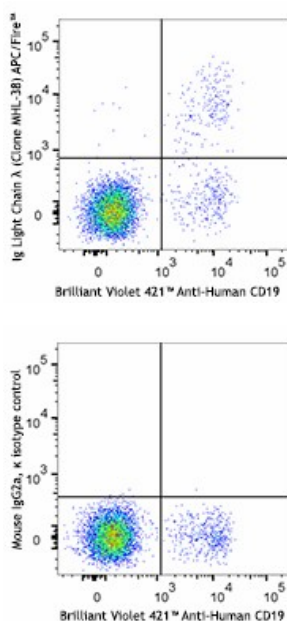
Related Protocols

[Cell Surface Flow Cytometry Staining Protocol](#)

Other Formats

Purified anti-human Ig light chain λ , Biotin anti-human Ig light chain λ , FITC anti-human Ig light chain λ , PE anti-human Ig light chain λ , APC anti-human Ig light chain λ , Alexa Fluor® 488 anti-human Ig light chain λ , Alexa Fluor® 647 anti-human Ig light chain λ , Pacific Blue™ anti-human Ig light chain λ , PerCP/Cyanine5.5 anti-human Ig light chain λ , Purified anti-human Ig light chain λ (Maxpar® Ready), PE/Dazzle™ 594 anti-human Ig light chain λ , PE/Cyanine7 anti-human Ig light chain λ , APC/Fire™ 750 anti-human Ig light chain λ , TotalSeq™-A0898 anti-human Ig light chain λ , TotalSeq™-C0898 anti-human Ig light chain λ , Alexa Fluor® 700 anti-human Ig light chain λ , TotalSeq™-B0898 anti-human Ig light chain λ , APC/Cyanine7 anti-human Ig light chain λ , TotalSeq™-D0898 anti-human Ig light chain λ

Product Data



Human peripheral blood lymphocytes stained with CD19 Brilliant Violet 421™ and anti-Human Ig Light Chain λ (clone MHL-38) APC/Fire™ 750 (top) or mouse IgG2a, κ APC/Fire™ 750 isotype control (bottom).

For research use only. Not for diagnostic use. Not for resale. BioLegend will not be held responsible for patent infringement or other violations that may occur with the use of our products.

*These products may be covered by one or more Limited Use Label Licenses (see the BioLegend Catalog or our website, www.biolegend.com/ordering#license). BioLegend products may not be transferred to third parties, resold, modified for resale, or used to manufacture commercial products, reverse engineer functionally similar materials, or to provide a service to third parties without written approval of BioLegend. By use of these products you accept the terms and conditions of all applicable Limited Use Label Licenses. Unless otherwise indicated, these products are for research use only and are not intended for human or animal diagnostic, therapeutic or commercial use.

BioLegend Inc., 8999 BioLegend Way, San Diego, CA 92121 www.biolegend.com
Toll-Free Phone: 1-877-Bio-Legend (246-5343) Phone: (858) 768-5800 Fax: (877) 455-9587