

APC/Fire™ 750 anti-human CD56 (NCAM) Recombinant Antibody

Catalog# / Size	392407 / 25 tests 392408 / 100 tests
Clone	QA17A16
Regulatory Status	RUO
Other Names	Leu-19, NKH1
Isotype	Mouse IgG1, κ
Description	CD56 is a single transmembrane glycoprotein also known as NCAM (Neural Cell Adhesion Molecule), Leu-19, or NKH1. It is a member of the Ig superfamily. The 140 kD isoform is expressed on NK cells and NK-T cells. CD56 is also expressed in the brain (cerebellum and cortex) and at neuromuscular junctions. Certain large granular lymphocyte (LGL) leukemias, small-cell lung carcinomas, neuronal derived tumors, myelomas, and myeloid leukemias also express CD56. CD56 plays a role in homophilic and heterophilic adhesion via binding to itself or heparin sulfate.

Product Details

Verified Reactivity	Human
Antibody Type	Recombinant
Host Species	Mouse
Formulation	Phosphate-buffered solution, pH 7.2, containing 0.09% sodium azide and BSA (origin USA)
Preparation	The antibody was purified by affinity chromatography and conjugated with APC/Fire™ 750 under optimal conditions.
Concentration	Lot-specific (to obtain lot-specific concentration, please enter the lot number in our Concentration and Expiration Lookup or Certificate of Analysis online tools.)
Storage & Handling	The antibody solution should be stored undiluted between 2°C and 8°C, and protected from prolonged exposure to light. Do not freeze.
Application	FC - Quality tested
Recommended Usage	Each lot of this antibody is quality control tested by immunofluorescent staining with flow cytometric analysis . For flow cytometric staining, the suggested use of this reagent is 5 µl per million cells in 100 µl staining volume or 5 µl per 100 µl of whole blood. * APC/Fire™ 750 has a maximum excitation of 650 nm and a maximum emission of 787 nm.
Excitation Laser	Red Laser (633 nm)
RRID	AB_2728403 (BioLegend Cat. No. 392407) AB_2728404 (BioLegend Cat. No. 392408)

Antigen Details

Structure	Ig superfamily, single transmembrane or GPI-anchored glycoprotein
Distribution	NK cells, NK-Tcells, brain and neuromuscular junctions, certain large granular lymphocyte (LGL) leukemias, small-cell lung carcinomas, neuronal derived tumors, myelomas, and myeloid leukemias
Function	Adhesion
Ligand/Receptor	Heparin sulfate
Cell Type	Leukemia, Neurons, NK cells, NKT cells

Biology Area Cell Adhesion, Cell Biology, Costimulatory Molecules, Immunology

Molecular Family Adhesion Molecules, CD Molecules

Antigen References

1. Lanier L, *et al.* 1991. *J. Immunol.* 146:4421.
2. Hemperly J, *et al.* 1990. *J. Mol. Neurosci.* 2:71.
3. Cremer H, *et al.* 1994. *Nature* 367:455.

Gene ID [4684](#)

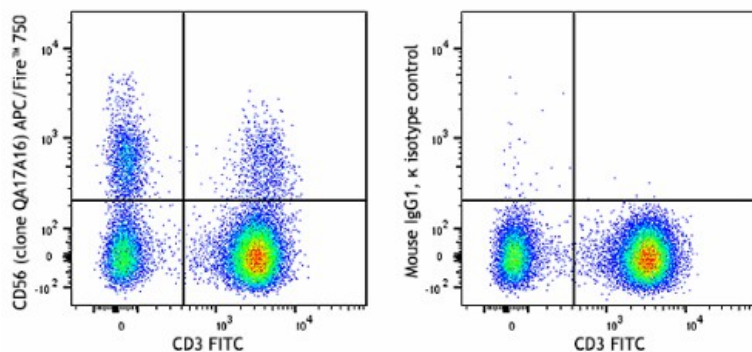
Related Protocols

[Cell Surface Flow Cytometry Staining Protocol](#)

Other Formats

Purified anti-human CD56 (NCAM) Recombinant Antibody, PE anti-human CD56 (NCAM) Recombinant Antibody, APC anti-human CD56 (NCAM) Recombinant Antibody, Alexa Fluor® 700 anti-human CD56 (NCAM) Recombinant Antibody, APC/Fire™ 750 anti-human CD56 (NCAM) Recombinant Antibody, PE/Dazzle™ 594 anti-human CD56 (NCAM) Recombinant Antibody, FITC anti-human CD56 (NCAM) Recombinant Antibody, PE/Cyanine7 anti-human CD56 (NCAM) Recombinant Antibody, Pacific Blue™ anti-human CD56 (NCAM) Recombinant Antibody, TotalSeq™-A0084 anti-human CD56 (NCAM) Recombinant Antibody, PerCP/Cyanine5.5 anti-human CD56 (NCAM) Recombinant Antibody, TotalSeq™-B0084 anti-human CD56 (NCAM) Recombinant Antibody, TotalSeq™-C0084 anti-human CD56 (NCAM) Recombinant Antibody, PE/Fire™ 700 anti-human CD56 (NCAM) Recombinant Antibody, Spark YG™ 581 anti-human CD56 (NCAM) Recombinant Antibody, PE/Fire™ 640 anti-human CD56 (NCAM) Recombinant Antibody, PE anti-human CD56, APC/Fire™ 750 anti-human CD56, APC anti-human CD56, FITC anti-human CD56, PerCP/Cyanine5.5 anti-human CD56, PE/Cyanine7 anti-human CD56, Pacific Blue™ anti-human CD56, PE/Dazzle™ 594 anti-human CD56, Spark Red™ 718 anti-human CD56 (NCAM) Recombinant Antibody, PE/Fire™ 810 anti-human CD56 (NCAM) Recombinant Antibody

Product Data



Human peripheral blood lymphocytes were stained with FITC CD3 and APC/Fire™ 750 CD56 (Clone QA17A16) (left) or APC/Fire™ 750 mouse IgG1, κ isotype control (right).

For research use only. Not for diagnostic use. Not for resale. BioLegend will not be held responsible for patent infringement or other violations that may occur with the use of our products.

*These products may be covered by one or more Limited Use Label Licenses (see the BioLegend Catalog or our website, www.biolegend.com/ordering#license). BioLegend products may not be transferred to third parties, resold, modified for resale, or used to manufacture commercial products, reverse engineer functionally similar materials, or to provide a service to third parties without written approval of BioLegend. By use of these products you accept the terms and conditions of all applicable Limited Use Label Licenses. Unless otherwise indicated, these products are for research use only and are not intended for human or animal diagnostic, therapeutic or commercial use.

BioLegend Inc., 8999 BioLegend Way, San Diego, CA 92121 www.biolegend.com
Toll-Free Phone: 1-877-Bio-Legend (246-5343) Phone: (858) 768-5800 Fax: (877) 455-9587