

Biotin anti-human CD56 (NCAM) Antibody

Catalog# / Size	304620 / 100 µg
Clone	MEM-188
Regulatory Status	RUO
Workshop	VI NK26
Other Names	NCAM, Leu-19, NKH1
Isotype	Mouse IgG2a, κ
Description	CD56 is a single transmembrane glycoprotein also known as N-CAM (Neural Cell Adhesion Molecule), Leu-19, or NKH1. It is a member of the Ig superfamily. The 140 kD isoform is expressed on NK cells and NK-T cells. CD56 is also expressed in the brain (cerebellum and cortex) and at neuromuscular junctions. Certain large granular lymphocyte (LGL) leukemias, small-cell lung carcinomas, neuronal derived tumors, myelomas, and myeloid leukemias also express CD56. CD56 plays a role in homophilic and heterophilic adhesion via binding to itself or heparin sulfate.

Product Details

Verified Reactivity	Human
Reported Reactivity	Cow, Pig
Antibody Type	Monoclonal
Host Species	Mouse
Immunogen	KG-1 human acute myelogenous leukemia cell line
Formulation	Phosphate-buffered solution, pH 7.2, containing 0.09% sodium azide.
Preparation	The antibody was purified by affinity chromatography, and conjugated with biotin under optimal conditions.
Concentration	0.5 mg/ml
Storage & Handling	The antibody solution should be stored undiluted between 2°C and 8°C. Do not freeze.
Application	FC - Quality tested
Recommended Usage	Each lot of this antibody is quality control tested by immunofluorescent staining with flow cytometric analysis . For flow cytometric staining, the suggested use of this reagent is ≤ 2.0 µg per million cells in 100 µl volume. It is recommended that the reagent be titrated for optimal performance for each application.
Application Notes	Additional reported applications (for the relevant formats) include: immunoprecipitation, immunohistochemical staining of formalin-fixed paraffin-embedded tissue sections, and Western blotting (non-reducing).
Application References	1. Kishimoto T, <i>et al.</i> Eds. 1997. Leucocyte Typing VI. Garland Publishing Inc. London.
(PubMed link indicates BioLegend citation)	
RRID	AB_528851 (BioLegend Cat. No. 304620)

Antigen Details

Structure	Ig superfamily, single transmembrane or GPI-anchored glycoprotein, 175-185 kD
------------------	---

Distribution	NK cells, T subset, neural tissue, some LGL and myeloid leukemias
Function	Adhesion
Ligand/Receptor	Heparin sulfate
Cell Type	Leukemia, Mesenchymal Stem Cells, Neurons, NK cells, T cells
Biology Area	Cell Adhesion, Cell Biology, Costimulatory Molecules, Immunology, Innate Immunity, Neuroscience, Stem Cells, Synaptic Biology
Molecular Family	Adhesion Molecules, CD Molecules
Antigen References	<ol style="list-style-type: none"> 1. Lanier L, <i>et al.</i> 1991. <i>J. Immunol.</i> 146:4421. 2. Hemperly J, <i>et al.</i> 1990. <i>J. Mol. Neurosci.</i> 2:71. 3. Cremer H, <i>et al.</i> 1994. <i>Nature</i> 367:455.
Gene ID	4684

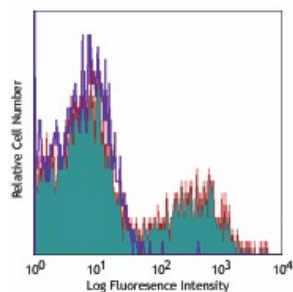
Related Protocols

[Cell Surface Flow Cytometry Staining Protocol](#)

Other Formats

APC anti-human CD56 (NCAM), FITC anti-human CD56 (NCAM), PE anti-human CD56 (NCAM), PE/Cyanine5 anti-human CD56 (NCAM), Purified anti-human CD56 (NCAM), Alexa Fluor® 488 anti-human CD56 (NCAM), Alexa Fluor® 647 anti-human CD56 (NCAM), Biotin anti-human CD56 (NCAM), Pacific Blue™ anti-human CD56 (NCAM), PE/Cyanine7 anti-human CD56 (NCAM), PerCP/Cyanine5.5 anti-human CD56 (NCAM), Ultra-LEAF™ Purified anti-human CD56 (NCAM)

Product Data



Human peripheral blood lymphocytes stained with biotinylated MEM-188, followed by Sav-PE

For research use only. Not for diagnostic use. Not for resale. BioLegend will not be held responsible for patent infringement or other violations that may occur with the use of our products.

*These products may be covered by one or more Limited Use Label Licenses (see the BioLegend Catalog or our website, www.biolegend.com/ordering#license). BioLegend products may not be transferred to third parties, resold, modified for resale, or used to manufacture commercial products, reverse engineer functionally similar materials, or to provide a service to third parties without written approval of BioLegend. By use of these products you accept the terms and conditions of all applicable Limited Use Label Licenses. Unless otherwise indicated, these products are for research use only and are not intended for human or animal diagnostic, therapeutic or commercial use.

BioLegend Inc., 8999 BioLegend Way, San Diego, CA 92121 www.biolegend.com
Toll-Free Phone: 1-877-Bio-Legend (246-5343) Phone: (858) 768-5800 Fax: (877) 455-9587