

Biotin anti-mouse CD2 Antibody

Catalog# / Size	100103 / 50 µg 100104 / 500 µg
Clone	RM2-5
Regulatory Status	RUO
Other Names	LFA-2, T11, Ly-37, SRBC-R
Isotype	Rat IgG2b, λ
Description	CD2 is a 45-58 kD type I transmembrane glycoprotein, also known as LFA-2, T11 or Ly-37. It is a member of the Ig superfamily. Mouse CD2 is primarily expressed on T cells, B cells, thymocytes and NK cells. It is a ligand for CD48 and is involved in T cell activation and differentiation.

Product Details

Verified Reactivity	Mouse
Antibody Type	Monoclonal
Host Species	Rat
Immunogen	BALB/c mouse thymocytes
Formulation	Phosphate-buffered solution, pH 7.2, containing 0.09% sodium azide.
Preparation	The antibody was purified by affinity chromatography, and conjugated with biotin under optimal conditions.
Concentration	0.5 mg/ml
Storage & Handling	The antibody solution should be stored undiluted between 2°C and 8°C. Do not freeze.
Application	FC - Quality tested
Recommended Usage	Each lot of this antibody is quality control tested by immunofluorescent staining with flow cytometric analysis . For flow cytometric staining, the suggested use of this reagent is ≤ 0.25 µg per 10 ⁶ cells in 100 µl volume. It is recommended that the reagent be titrated for optimal performance for each application.
Application Notes	Additional reported applications (for the relevant formats) include: <i>in vitro</i> blocking of CD2-mediated cell-cell adhesion and inhibition of T cell activation ¹ , blocking of T cell A.I.C.D. ² , immunoprecipitation ³ , and co-induction of thymocyte maturation ⁴ . The RM2-5 antibody can block CD2-mediated cell-cell adhesion. The Ultra-LEAF™ Purified antibody (Endotoxin < 0.01 EU/µg, Azide-Free, 0.2 µm filtered) is recommended for functional assays (Cat. Nos. 100118 and 100119).
Application References	<ol style="list-style-type: none"> 1. Nakamura T, <i>et al.</i> 1990. <i>J. Immunol.</i> 145:3628. (Block) 2. Ayroldi E, <i>et al.</i> 1997. <i>Blood</i> 89:3717. (Block) 3. Criado G, <i>et al.</i> 1996. <i>Eur. J. Immunol.</i> 26:1228. (IP) 4. Cibotti R, <i>et al.</i> 1997. <i>Immunity</i> 6:245. (Costim)
Product Citations	<ol style="list-style-type: none"> 1. Sasse C, <i>et al.</i> 2022. <i>Pathogens</i>. 11: PubMed 2. Barry KC, <i>et al.</i> 2018. <i>Nat Med.</i> 24:1178. PubMed 3. Chen X <i>et al.</i> 2017. <i>Cell stem cell.</i> 21(6):747-760. PubMed 4. Ruhland MK, <i>et al.</i> 2020. <i>Cancer Cell.</i> 37(6):786-799.e5. PubMed 5. Comazetto S <i>et al.</i> 2018. <i>Cell stem cell.</i> 24(3):477-486. PubMed 6. Hasenberg M, <i>et al.</i> 2011. <i>PLoS One.</i> 6:e17314. PubMed
RRID	AB_312650 (BioLegend Cat. No. 100103) AB_312651 (BioLegend Cat. No. 100104)

Antigen Details

Structure	Ig superfamily, 45-58 kD
Distribution	T cells, thymocytes, NK cells, B cells
Function	T cell activation, adhesion
Ligand/Receptor	CD48, Ick
Cell Type	B cells, NK cells, T cells, Thymocytes
Biology Area	Costimulatory Molecules, Immunology
Molecular Family	CD Molecules
Antigen References	1. Barclay AN, <i>et al.</i> 1997. The Leukocyte Antigen FactsBook Academic Press. 2. Davis SJ, <i>et al.</i> 1996. <i>Immunol. Today</i> 17:177. 3. Bierer BE, <i>et al.</i> 1989. <i>Annu. Rev. Immunol.</i> 7:579.
Gene ID	12481

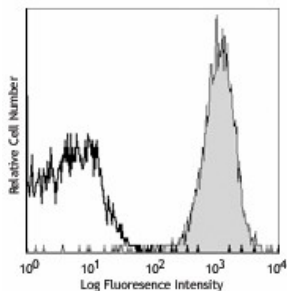
Related Protocols

[Cell Surface Flow Cytometry Staining Protocol](#)

Other Formats

Biotin anti-mouse CD2, FITC anti-mouse CD2, PE anti-mouse CD2, Purified anti-mouse CD2, APC anti-mouse CD2, PE/Cyanine7 anti-mouse CD2, PerCP/Cyanine5.5 anti-mouse CD2, TotalSeq™-A0892 anti-mouse CD2, Ultra-LEAF™ Purified anti-mouse CD2, TotalSeq™-C0892 anti-mouse CD2

Product Data



C57BL/6 mouse splenocytes stained with biotinylated RM2-5, followed by Sav-PE

For research use only. Not for diagnostic use. Not for resale. BioLegend will not be held responsible for patent infringement or other violations that may occur with the use of our products.

*These products may be covered by one or more Limited Use Label Licenses (see the BioLegend Catalog or our website, www.biolegend.com/ordering#license). BioLegend products may not be transferred to third parties, resold, modified for resale, or used to manufacture commercial products, reverse engineer functionally similar materials, or to provide a service to third parties without written approval of BioLegend. By use of these products you accept the terms and conditions of all applicable Limited Use Label Licenses. Unless otherwise indicated, these products are for research use only and are not intended for human or animal diagnostic, therapeutic or commercial use.

BioLegend Inc., 8999 BioLegend Way, San Diego, CA 92121 www.biolegend.com
Toll-Free Phone: 1-877-Bio-Legend (246-5343) Phone: (858) 768-5800 Fax: (877) 455-9587