

FITC anti-human CD32 Antibody

Catalog# / Size	303204 / 100 tests
Clone	FUN-2
Regulatory Status	RUO
Workshop	VI B051
Other Names	FCR II, FcγRII
Isotype	Mouse IgG2b, κ
Description	CD32 is a 40 kD polymorphic transmembrane glycoprotein also known as FcγRII and FCRII. It is an immunoglobulin superfamily member expressed on monocytes/macrophages, granulocytes, platelets and B cells. There are at least 6 isoforms of CD32 resulting from alternative mRNA splicing. CD32 mediates phagocytosis and oxidative burst in granulocytes, as well as platelet aggregation and immunomodulation. The extracellular domain of CD32 binds to polymeric and aggregated IgG and immune complexes, while the intracellular domain has been reported to associate with SHP-1 (B1 isoform).

Product Details

Verified Reactivity	Human
Reported Reactivity	African Green, Baboon, Cynomolgus, Rhesus
Antibody Type	Monoclonal
Host Species	Mouse
Formulation	Phosphate-buffered solution, pH 7.2, containing 0.09% sodium azide and BSA (origin USA)
Preparation	The antibody was purified by affinity chromatography, and conjugated with FITC under optimal conditions.
Storage & Handling	The antibody solution should be stored undiluted between 2°C and 8°C, and protected from prolonged exposure to light. Do not freeze.
Application	FC - Quality tested
Recommended Usage	Each lot of this antibody is quality control tested by immunofluorescent staining with flow cytometric analysis . For flow cytometric staining, the suggested use of this reagent is 5 µl per million cells in 100 µl staining volume or 5 µl per 100 µl of whole blood.
Application Notes	Additional reported applications (for the relevant formats) include: immunohistochemical staining ³ of acetone-fixed frozen tissue sections. Clone FUN-2 recognizes both CD32A and CD32B.
Application References (PubMed link indicates BioLegend citation)	<ol style="list-style-type: none">1. Kishimoto T, <i>et al.</i> 1997. Leucocyte Typing VI Garland Press. London.2. Lerino F, <i>et al.</i> 1993. <i>J. Immunol.</i> 150:1794.3. Personal communication.4. van Tits L, <i>et al.</i> 2005. <i>Arterioscler Thromb Vasc Biol.</i> 25:717. PubMed5. Smeltz RB. 2007. <i>J. Immunol.</i> 178:4786.6. Satta N, <i>et al.</i> 2011. <i>Blood.</i> 117:5223. PubMed.
Product Citations	<ol style="list-style-type: none">1. Blaszczak AM, <i>et al.</i> 2019. <i>J Diabetes Res.</i> 2019:8124563. PubMed2. Lee WS, <i>et al.</i> 2021. <i>Cell Rep Med.</i> 2:100296. PubMed
RRID	AB_314336 (BioLegend Cat. No. 303204)

Antigen Details

Structure	Ig superfamily, polymorphic transmembrane glycoprotein, 40 kD
Distribution	Monocytes, granulocytes, B cells, platelets
Function	Endocytosis, cytotoxicity, platelet aggregation, B cell function
Ligand/Receptor	Aggregated IgG, immune complex
Cell Type	B cells, Dendritic cells, Granulocytes, Monocytes, Platelets
Biology Area	Immunology, Innate Immunity
Molecular Family	CD Molecules, Fc Receptors
Antigen References	<ol style="list-style-type: none">1. Stuart S, <i>et al.</i> 1989. <i>EMBO J.</i> 8:3657.2. Huang Y, <i>et al.</i> 1999. <i>Scand. J. Immunol.</i> 49:177.3. Hisaka H, <i>et al.</i> 1999. <i>Pathobiology</i> 67:92.
Gene ID	2212

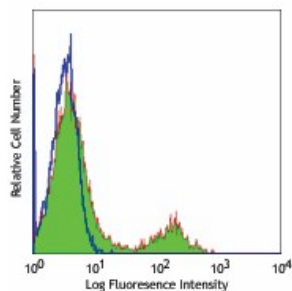
Related Protocols

[Cell Surface Flow Cytometry Staining Protocol](#)

Other Formats

APC anti-human CD32, FITC anti-human CD32, PE anti-human CD32, Purified anti-human CD32, Alexa Fluor® 647 anti-human CD32, PE/Cyanine7 anti-human CD32, PerCP/Cyanine5.5 anti-human CD32, PE/Dazzle™ 594 anti-human CD32, APC/Fire™ 750 anti-human CD32, TotalSeq™-A0142 anti-human CD32, TotalSeq™-C0142 anti-human CD32, TotalSeq™-B0142 anti-human CD32, APC/Cyanine7 anti-human CD32, Biotin anti-human CD32, Spark Violet™ 500 anti-human CD32, TotalSeq™-D0142 anti-human CD32

Product Data



Human peripheral blood lymphocytes stained with FUN-2 FITC

For research use only. Not for diagnostic use. Not for resale. BioLegend will not be held responsible for patent infringement or other violations that may occur with the use of our products.

*These products may be covered by one or more Limited Use Label Licenses (see the BioLegend Catalog or our website, www.biolegend.com/ordering#license). BioLegend products may not be transferred to third parties, resold, modified for resale, or used to manufacture commercial products, reverse engineer functionally similar materials, or to provide a service to third parties without written approval of BioLegend. By use of these products you accept the terms and conditions of all applicable Limited Use Label Licenses. Unless otherwise indicated, these products are for research use only and are not intended for human or animal diagnostic, therapeutic or commercial use.

BioLegend Inc., 8999 BioLegend Way, San Diego, CA 92121 www.biolegend.com
Toll-Free Phone: 1-877-Bio-Legend (246-5343) Phone: (858) 768-5800 Fax: (877) 455-9587