

Pacific Blue™ anti-human CD8a Antibody

Catalog# / Size	301026 / 25 µg 301033 / 100 tests 301023 / 100 µg
Clone	RPA-T8
Regulatory Status	RUO
Workshop	IV T171
Other Names	T8, Leu2
Isotype	Mouse IgG1, κ
Description	CD8a is a 32-34 kD type I glycoprotein. It forms a homodimer (CD8a/a) or heterodimer (CD8a/b) with CD8b. CD8, also known as T8 and Leu2, is a member of the immunoglobulin superfamily found on the majority of thymocytes, a subset of peripheral blood T cells, and NK cells (which express almost exclusively CD8a homodimers). CD8 acts as a co-receptor with MHC class I-restricted T cell receptors in antigen recognition and T cell activation, and has been shown to play a role in thymic differentiation. Two domains in CD8a are important for function: the extracellular IgSF domain binds the α3 domain of MHC class I and the cytoplasmic CXCP motif binds the tyrosine kinase p56 Lck.

Product Details

Verified Reactivity	Human, Cynomolgus, Rhesus
Reported Reactivity	Chimpanzee, Baboon, Pigtailed Macaque, Sooty Mangabey
Antibody Type	Monoclonal
Host Species	Mouse
Formulation	test size: Phosphate-buffered solution, pH 7.2, containing 0.09% sodium azide and BSA (origin USA). µg sizes: Phosphate-buffered solution, pH 7.2, containing 0.09% sodium azide.
Preparation	The antibody was purified by affinity chromatography, and conjugated with Pacific Blue™ under optimal conditions.
Concentration	µg sizes: 0.5 mg/mL test sizes: lot-specific (to obtain lot-specific concentration, please enter the lot number in our Concentration and Expiration Lookup or Certificate of Analysis online tools.
Storage & Handling	The antibody solution should be stored undiluted between 2°C and 8°C, and protected from prolonged exposure to light. Do not freeze.
Application	FC - Quality tested
Recommended Usage	Each lot of this antibody is quality control tested by immunofluorescent staining with flow cytometric analysis . For test size, the suggested use of this reagent for immunofluorescent staining is 5 µl per 10 ⁶ cells in 100 µl volume. For µg sizes, the suggested use of this reagent for immunofluorescent staining is ≤1.0 µg per 10 ⁶ cells in 100 µl volume. It is recommended that the reagent be titrated for optimal performance for each application. * Pacific Blue™ has a maximum emission of 455 nm when it is excited at 405 nm. Prior to using Pacific Blue™ conjugate for flow cytometric analysis, please verify your flow cytometer's capability of exciting and detecting the fluorochrome. Alexa Fluor® and Pacific Blue™ are trademarks of Life Technologies Corporation. View full statement regarding label licenses
Excitation Laser	Violet Laser (405 nm)

Application Notes

The RPA-T8 antibody does not block the binding of HIT8a antibody to CD8a. Additional reported applications of this antibody (for the relevant formats) include: immunohistochemical staining of paraformaldehyde-fixed frozen sections³ and costimulation of T cell responses⁴. This clone was tested in-house and does not work on formalin fixed paraffin-embedded (FFPE) tissue. The Ultra-LEAF™ purified antibody (Endotoxin <0.1 EU/μg, Azide-Free, 0.2 μm filtered) is recommended for functional assays (Cat. Nos. 301073 & 301074).

Application References

(PubMed link indicates BioLegend citation)

1. Knapp W, *et al.* Eds. 1989. Leucocyte Typing IV. Oxford University Press. New York.
2. Schlossman S, *et al.* Eds. 1995. Leucocyte Typing V. Oxford University Press. New York.
3. Mack CL, *et al.* 2004. *Pediatr. Res.* 56:79. (IHC)
4. Magidovich E, *et al.* 2007. *P. Natl. Acad. Sci. USA* 104:13022.
5. Thakral D, *et al.* 2008. *J. Immunol.* 180:7431. [PubMed](#)
6. Kmiecik M, *et al.* 2009. *J. Transl. Med.* 7:89. (FC) [PubMed](#)
7. Thakral D, *et al.* 2008. *J. Immunol.* 180:7431. (FC) [PubMed](#)
8. Yoshino N, *et al.* 2000. *Exp. Anim. (Tokyo)* 49:97. (FC)
9. Rout N, *et al.* 2010. *PLoS One* 5:e9787. (FC)
10. Stoeckius M, *et al.* 2017. *Nat. Methods.* 14:865. (PG)

Product Citations

1. Tocheva AS, *et al.* 2020. *Curr Protoc Immunol.* 130:e103. [PubMed](#)
2. Toepfner N *et al.* 2018. *eLife.* 7 pii: e29213. [PubMed](#)
3. Petit N, *et al.* 2015. *PLoS One.* 10: 0138420. [PubMed](#)
4. Durgeau A, *et al.* 2018. *Nat Commun.* 9:5097. [PubMed](#)
5. Wu HL, *et al.* 2018. *J Immunol.* 200:49. [PubMed](#)
6. Yang R, *et al.* 2020. *Cell.* 183(7):1826-1847.e31. [PubMed](#)
7. Bäcker-Koduah P, *et al.* 2020. *Ann Clin Transl Neurol.* 1.422222222. [PubMed](#)
8. Koreth J, *et al.* 2016. *Blood.* 128: 130 - 137. [PubMed](#)
9. Stunnenberg M, *et al.* 2020. *Viruses.* 12:00. [PubMed](#)
10. Leclerc M, *et al.* 2019. *Nat Commun.* 10:3345. [PubMed](#)
11. Serr I, *et al.* 2016. *Nat Commun.* 7:10991. [PubMed](#)
12. Corgnac S, *et al.* 2021. *STAR Protocols.* 2(1):100267. [PubMed](#)
13. Khazen R, *et al.* 2016. *Nat Commun.* 7:10823. [PubMed](#)

RRID

AB_493111 (BioLegend Cat. No. 301026)
AB_1595443 (BioLegend Cat. No. 301033)
AB_493110 (BioLegend Cat. No. 301023)

Antigen Details

Structure	Ig superfamily, homodimer or heterodimer with CD8β, 32-34 kD
Distribution	Majority of thymocytes, T cell subset, NK cells
Function	MHC class I co-receptor, thymic differentiation, T cell activation
Ligand/Receptor	MHC Class I molecules
Cell Type	Dendritic cells, NK cells, T cells, Thymocytes, Tregs
Biology Area	Immunology
Molecular Family	CD Molecules
Antigen References	1. Barclay N, <i>et al.</i> 1993. <i>The Leucocyte Antigen FactsBook.</i> Academic Press Inc. San Diego.
Gene ID	925

Related Protocols

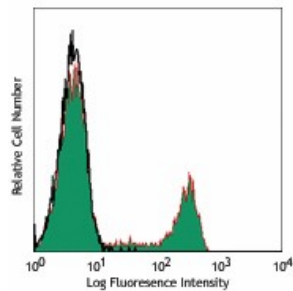
[Cell Surface Flow Cytometry Staining Protocol](#)

Other Formats

APC anti-human CD8a, APC/Cyanine7 anti-human CD8a, Biotin anti-human CD8a, FITC anti-human CD8a, PE anti-human CD8a, PE/Cyanine5 anti-human CD8a, PE/Cyanine7 anti-human CD8a, Purified anti-human CD8a, Alexa Fluor® 488 anti-human CD8a, Alexa Fluor® 647 anti-human CD8a, Pacific Blue™ anti-human CD8a, Alexa Fluor® 700 anti-human CD8a, PerCP anti-human CD8a, PerCP/Cyanine5.5 anti-human CD8a, Brilliant Violet 421™ anti-human CD8a, Brilliant Violet 570™ anti-human CD8a, Brilliant

Violet 605™ anti-human CD8a, Brilliant Violet 650™ anti-human CD8a, Brilliant Violet 711™ anti-human CD8a, Brilliant Violet 785™ anti-human CD8a, Brilliant Violet 510™ anti-human CD8a, Purified anti-human CD8a (Maxpar® Ready), Alexa Fluor® 594 anti-human CD8a, PE/Dazzle™ 594 anti-human CD8a, APC/Fire™ 750 anti-human CD8a, TotalSeq™-A0080 anti-human CD8a, TotalSeq™-B0080 anti-human CD8a, TotalSeq™-C0080 anti-human CD8a, Ultra-LEAF™ Purified anti-human CD8a, Spark Violet™ 423 anti-human CD8a Antibody

Product Data



Human peripheral blood lymphocytes stained with RPA-T8 Pacific Blue™

For research use only. Not for diagnostic use. Not for resale. BioLegend will not be held responsible for patent infringement or other violations that may occur with the use of our products.

*These products may be covered by one or more Limited Use Label Licenses (see the BioLegend Catalog or our website, www.biolegend.com/ordering#license). BioLegend products may not be transferred to third parties, resold, modified for resale, or used to manufacture commercial products, reverse engineer functionally similar materials, or to provide a service to third parties without written approval of BioLegend. By use of these products you accept the terms and conditions of all applicable Limited Use Label Licenses. Unless otherwise indicated, these products are for research use only and are not intended for human or animal diagnostic, therapeutic or commercial use.

BioLegend Inc., 8999 BioLegend Way, San Diego, CA 92121 www.biolegend.com
Toll-Free Phone: 1-877-Bio-Legend (246-5343) Phone: (858) 768-5800 Fax: (877) 455-9587