

## PE anti-human CD25 Antibody

<b>Catalog# / Size</b>	302605 / 25 tests 302606 / 100 tests
<b>Clone</b>	BC96
<b>Regulatory Status</b>	RUO
<b>Workshop</b>	V T-072
<b>Other Names</b>	Low affinity IL-2R, IL-2R $\alpha$ chain, Tac, p55
<b>Isotype</b>	Mouse IgG1, $\kappa$
<b>Description</b>	CD25 is a 55 kD type I transmembrane glycoprotein also known as the low affinity IL-2 receptor $\alpha$ chain or Tac. It is expressed on progenitor lymphocytes, activated T and B cells, and activated monocytes/macrophages. CD25 is also expressed on a subset of non-stimulated CD4 <sup>+</sup> T cells termed T regulatory cells. CD25 associates with the IL-2 receptor $\beta$ (CD122) and common $\gamma$ chains (CD132) to form the high affinity IL-2R complex.

### Product Details

<b>Verified Reactivity</b>	Human
<b>Reported Reactivity</b>	Baboon, Chimpanzee, Cynomolgus, Pigtailed Macaque, Rhesus
<b>Antibody Type</b>	Monoclonal
<b>Host Species</b>	Mouse
<b>Formulation</b>	Phosphate-buffered solution, pH 7.2, containing 0.09% sodium azide and BSA (origin USA)
<b>Preparation</b>	The antibody was purified by affinity chromatography, and conjugated with PE under optimal conditions.
<b>Concentration</b>	Lot-specific (to obtain lot-specific concentration, please enter the lot number in our <a href="#">Concentration and Expiration Lookup</a> or <a href="#">Certificate of Analysis</a> online tools.)
<b>Storage &amp; Handling</b>	The CD25 antibody solution should be stored undiluted between 2°C and 8°C, and protected from prolonged exposure to light. <b>Do not freeze.</b>
<b>Application</b>	<a href="#">FC - Quality tested</a>
<b>Recommended Usage</b>	Each lot of this antibody is quality control tested by <a href="#">immunofluorescent staining with flow cytometric analysis</a> . For flow cytometric staining, the suggested use of this reagent is 5 $\mu$ l per million cells in 100 $\mu$ l staining volume or 5 $\mu$ l per 100 $\mu$ l of whole blood.
<b>Excitation Laser</b>	Blue Laser (488 nm) Green Laser (532 nm)/Yellow-Green Laser (561 nm)
<b>Application Notes</b>	Additional reported applications include: immunocytochemistry <sup>3</sup> .
<b>Application References</b>	1. Schlossman S, <i>et al.</i> Eds. 1995. Leucocyte Typing V. Oxford University Press. New York. 2. Kmiecik M, <i>et al.</i> 2009. <i>J. Transl. Med.</i> 7:89. (FC) <a href="#">PubMed</a> 3. Ernst CW, <i>et al.</i> 2007. <i>Clin. Exp. Immunol.</i> 148:271. (ICC) <a href="#">PubMed</a>
<b>(PubMed link indicates BioLegend citation)</b>	
<b>Product Citations</b>	1. Ajith A, <i>et al.</i> 2021. <i>Front Immunol.</i> 12:687715. <a href="#">PubMed</a> 2. Tang M, <i>et al.</i> 2019. <i>Biomed Res Int.</i> 2019:1050285. <a href="#">PubMed</a> 3. Miragaia RJ, <i>et al.</i> 2019. <i>Immunity.</i> 50:493. <a href="#">PubMed</a> 4. Iwahori K, <i>et al.</i> 2019. <i>Sci Rep.</i> 2.205555556. <a href="#">PubMed</a> 5. Yang M, <i>et al.</i> 2019. <i>Cell Physiol Biochem.</i> 52:1178. <a href="#">PubMed</a> 6. Riner D, <i>et al.</i> 2016. <i>PLoS Negl Trop Dis.</i> 10:e0005180. <a href="#">PubMed</a> 7. Netsrithong R, <i>et al.</i> 2020. <i>Stem Cell Research.</i> 39:101487.. <a href="#">PubMed</a> 8. Freeman ZT, <i>et al.</i> 2020. <i>J Clin Invest.</i> 130:1405. <a href="#">PubMed</a> 9. Miao L, <i>et al.</i> 2020. <i>Theranostics.</i> 0.7625. <a href="#">PubMed</a>

10. Li X, *et al.* 2019. Mol Med Rep. 19:4195. [PubMed](#)
11. Savage TM, *et al.* 2018. JCI Insight. 3:. [PubMed](#)
12. Marco Barros R, *et al.* 2016. Cell. 167: 203-218. [PubMed](#)
13. Wei H, *et al.* 2021. Malar J. 20:89. [PubMed](#)
14. Xun X, *et al.* 2021. Am J Transl Res. 13:4360. [PubMed](#)
15. Vinogradova EV, *et al.* 2021. STAR Protoc. 2:100458. [PubMed](#)
16. Saadati S, *et al.* 2020. Avicenna J Med Biotechnol. 0.591666667. [PubMed](#)
17. Klemm F, *et al.* 2020. Cell. 181(7):1643-1660.e17. [PubMed](#)
18. Delacher M, *et al.* 2021. Immunity. 54(4):702-720.e17. [PubMed](#)
19. Pothlichet J, *et al.* 2022. Front Immunol. 13:824746. [PubMed](#)
20. Bellini N, *et al.* 2022. iScience. 25:105234. [PubMed](#)
21. Goletz C, *et al.* 2018. Front Immunol. 9:1614. [PubMed](#)
22. de Boer B *et al.* 2018. Cancer cell. 34(4):674-689 . [PubMed](#)
23. Lopatina T, *et al.* 2018. Sci Rep. 8:17458. [PubMed](#)
24. Ramien C, *et al.* 2020. Cell Reports. 29(4):810-815. [PubMed](#)
25. Soodgupta D, *et al.* 2019. Cell Rep. 29:829. [PubMed](#)
26. Meng S, *et al.* 2018. Mol Med Rep. 18:4247. [PubMed](#)
27. Kobayashi Y, *et al.* 2020. Int J Oncol. 999:56. [PubMed](#)
28. James E, *et al.* 2016. PLoS Pathog. 12: 1005375. [PubMed](#)
29. Chen Y, *et al.* 2012. PLoS One. 7:e47190. [PubMed](#)
30. Zhang W, *et al.* 2012. J Biol Chem. 287:34157. [PubMed](#)
31. Meléndez AV, *et al.* 2022. Cell Mol Life Sci. 79:513. [PubMed](#)
32. Lee JM, *et al.* 2022. Lupus Sci Med. 9:. [PubMed](#)
33. Wang B, *et al.* 2017. Stem Cell Res Ther.. 10.1186/s13287-017-0744-6. [PubMed](#)
34. Shevryev D, *et al.* 2021. Exp Ther Med. 209:21. [PubMed](#)
35. Robertson N, *et al.* 2020. J Biol Chem. . [PubMed](#)
36. Wu D, *et al.* 2020. Biomark Res. 8:3. [PubMed](#)
37. Chen Y, *et al.* 2021. Transl Lung Cancer Res. 10:2193. [PubMed](#)
38. Erdem A, *et al.* 2022. Nat Commun. 13:1105. [PubMed](#)
39. You M, *et al.* 2021. Nat Cell Biol. 23:620. [PubMed](#)
40. Carnevale J, *et al.* 2022. Nature. 609:174. [PubMed](#)
41. Fujigaki J, *et al.* 2015. PLoS One. 10: 0132521. [PubMed](#)
42. Scarneo SA, *et al.* 2022. Sci Rep. 12:18091. [PubMed](#)
43. Shen X, *et al.* 2021. Front Immunol. 12:710750. [PubMed](#)
44. Mengrelis K, *et al.* 2021. Pediatr Transplant. 25:e13930. [PubMed](#)
45. Zhou Y, *et al.* 2016. J Leukoc Biol. 100: 1201 - 1211. [PubMed](#)
46. Reichwald K, *et al.* 2014. PLoS One. 9:105627. [PubMed](#)
47. Luo X, *et al.* 2015. J Biol Chem. 290: 28675 - 28682. [PubMed](#)
48. Batikan O, *et al.* 2022. J Coll Physicians Surg Pak. 32:1004. [PubMed](#)
49. Houtsma R, *et al.* 2021. STAR Protoc. 2:100864. [PubMed](#)
50. Cohen CA, *et al.* 2021. Nat Commun. 12:4678. [PubMed](#)
51. Keefe RC, *et al.* 2021. Sci Rep. 11:14933. [PubMed](#)
52. Tian M, *et al.* 2021. Elife. 10:. [PubMed](#)
53. Chruewkamlow N, *et al.* 2021. Stem Cell Res Ther. 12:520. [PubMed](#)
54. Lima J, *et al.* 2016. Reprod Sci. 10.1177/1933719116653680. [PubMed](#)
55. Imura Y, *et al.* 2020. JCI Insight. :5. [PubMed](#)
56. Vinogradova EV, *et al.* 2020. Cell. 182(4):1009-1026.e29. [PubMed](#)
57. Han L, *et al.* 2014. J Biol Chem. 289:25546. [PubMed](#)
58. Hirschberger S, *et al.* 2021. EMBO Mol Med. 13:e14323. [PubMed](#)
59. Montel-Hagen A *et al.* 2019. Cell stem cell. 24(3):376-389 . [PubMed](#)
60. Zhang B, *et al.* 2020. Cell Chemical Biology. 28(1):60-69.e7. [PubMed](#)
61. Ferraro A, *et al.* 2014. Proc Natl Acad Sci U S A. 111:1111. [PubMed](#)
62. Csomós K, *et al.* 2022. Nat Immunol. 23:1256. [PubMed](#)
63. Maas RR, *et al.* 2021. Nat Protoc. 16:4692. [PubMed](#)
64. Bal S, *et al.* 2016. Nat Immunol. 10.1038/ni.3444. [PubMed](#)
65. Ajith A, *et al.* 2019. FASEB J. 33:5220. [PubMed](#)
66. Wang L, *et al.* 2018. Oncol Lett. 15:8635. [PubMed](#)
67. Loo Yau H, *et al.* 2021. STAR Protocols. 2(2):100549. [PubMed](#)
68. Dyson MR, *et al.* 2020. MAbs. 12:1829335. [PubMed](#)
69. Robertson N, *et al.* 2020. J Biol Chem. 295:18436. [PubMed](#)
70. Cerny D, *et al.* 2016. J Allergy Clin Immunol. 138:1709-1712. [PubMed](#)
71. Fierle JK, *et al.* 2021. Cell Reports Medicine. 2(8):100362. [PubMed](#)
72. Hui Z, *et al.* 2022. Cell Death Dis. 13:607. [PubMed](#)
73. Högelin KA, *et al.* 2021. iScience. 24:103078. [PubMed](#)
74. Choe JH, *et al.* 2021. Sci Transl Med. 13:. [PubMed](#)
75. Wang AS, *et al.* 2020. Molecular Cell. 79(2):221-233.e5.. [PubMed](#)
76. Kim N, *et al.* 2020. Nat Commun. 2.045138889. [PubMed](#)
77. Welch JL, *et al.* 2020. FEBS Lett. 594:695. [PubMed](#)

RRID

AB\_314275 (BioLegend Cat. No. 302605)  
 AB\_314276 (BioLegend Cat. No. 302606)

## Antigen Details

Structure

Type I transmembrane glycoprotein, 55 kD

<b>Distribution</b>	Activated T cells and B cells, monocytes/macrophages, Treg
<b>Function</b>	Associates with IL-2 receptor $\beta$ (CD122) and $\gamma$ chains (CD132) to form high affinity IL-2R complex
<b>Ligand/Receptor</b>	IL-2
<b>Cell Type</b>	B cells, Macrophages, Monocytes, T cells, Tregs
<b>Biology Area</b>	Cell Biology, Immunology, Neuroscience, Neuroscience Cell Markers
<b>Molecular Family</b>	CD Molecules, Cytokine/Chemokine Receptors
<b>Antigen References</b>	1. Taniguchi T, <i>et al.</i> 1993. <i>Cell</i> 73:5. 2. Waldmann T. 1991. <i>J. Biol. Chem.</i> 266:2681.
<b>Gene ID</b>	<a href="#">3559</a>

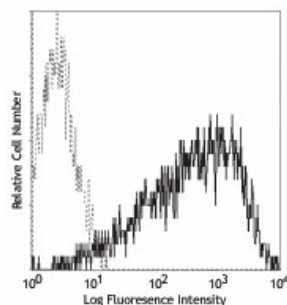
## Related Protocols

[Cell Surface Flow Cytometry Staining Protocol](#)

## Other Formats

APC anti-human CD25, FITC anti-human CD25, PE anti-human CD25, PE/Cyanine5 anti-human CD25, Purified anti-human CD25, APC/Cyanine7 anti-human CD25, PE/Cyanine7 anti-human CD25, Alexa Fluor® 488 anti-human CD25, Alexa Fluor® 647 anti-human CD25, Pacific Blue™ anti-human CD25, Alexa Fluor® 700 anti-human CD25, Biotin anti-human CD25, PerCP/Cyanine5.5 anti-human CD25, Brilliant Violet 421™ anti-human CD25, Brilliant Violet 605™ anti-human CD25, Brilliant Violet 650™ anti-human CD25, Brilliant Violet 711™ anti-human CD25, Brilliant Violet 785™ anti-human CD25, Brilliant Violet 510™ anti-human CD25, APC/Fire™ 750 anti-human CD25, TotalSeq™-A0085 anti-human CD25, PE/Dazzle™ 594 anti-human CD25, TotalSeq™-B0085 anti-human CD25, TotalSeq™-C0085 anti-human CD25, TotalSeq™-D0085 anti-human CD25

## Product Data



PHA-stimulated (3 day) human peripheral blood lymphocytes were stained with CD25 (clone BC96) PE (solid line) or mouse IgG1,  $\kappa$  PE isotype control (dotted line).

For research use only. Not for diagnostic use. Not for resale. BioLegend will not be held responsible for patent infringement or other violations that may occur with the use of our products.

\*These products may be covered by one or more Limited Use Label Licenses (see the BioLegend Catalog or our website, [www.biolegend.com/ordering#license](http://www.biolegend.com/ordering#license)). BioLegend products may not be transferred to third parties, resold, modified for resale, or used to manufacture commercial products, reverse engineer functionally similar materials, or to provide a service to third parties without written approval of BioLegend. By use of these products you accept the terms and conditions of all applicable Limited Use Label Licenses. Unless otherwise indicated, these products are for research use only and are not intended for human or animal diagnostic, therapeutic or commercial use.

BioLegend Inc., 8999 BioLegend Way, San Diego, CA 92121 [www.biolegend.com](http://www.biolegend.com)  
Toll-Free Phone: 1-877-Bio-Legend (246-5343) Phone: (858) 768-5800 Fax: (877) 455-9587