

## PE/Cyanine7 anti-human CD162 Antibody

|                          |  |
|--------------------------|--|
| <b>Catalog# / Size</b>   | 328815 / 25 tests<br>328816 / 100 tests  |
| <b>Clone</b>             | KPL-1  |
| <b>Regulatory Status</b> | RUO  |
| <b>Other Names</b>       | PSGL-1, p-selectin glycoprotein ligand-1   |
| <b>Isotype</b>           | Mouse IgG1, κ  |
| <b>Description</b>       | CD162, also known as p-selectin glycoprotein ligand-1 (PSGL-1), is a 120 - 220 kD, mucin-like type I transmembrane glycoprotein. CD162 binds to CD62P (P-Selectin), CD62E (E-Selectin) and CD62L (L-Selectin). The interactions between P-selectin and P-selectin glycoprotein ligand-1 (PSGL-1) mediate the earliest "rolling" of leukocytes on the luminal surface of activated endothelium, and the interaction between leukocytes and activated platelets or other leukocytes found at sites of inflammation. CD162 is expressed on neutrophils, monocytes, and most lymphocytes including NK and T cells but PSGL-1 stains B cells at significantly lower levels than other cell types. |

### Product Details

---

|   |  |
|---|--|
| <b>Verified Reactivity</b>                        | Human, Cynomolgus, Rhesus  |
| <b>Reported Reactivity</b>                        | African Green, Baboon  |
| <b>Antibody Type</b>                              | Monoclonal   |
| <b>Host Species</b>                               | Mouse  |
| <b>Immunogen</b>                                  | PSGL-1 transfected murine 300.19 pre B-cell line   |
| <b>Formulation</b>                                | Phosphate-buffered solution, pH 7.2, containing 0.09% sodium azide and BSA (origin USA)  |
| <b>Preparation</b>                                | The antibody was purified by affinity chromatography and conjugated with PE/Cyanine7 under optimal conditions.   |
| <b>Concentration</b>                              | Lot-specific (to obtain lot-specific concentration, please enter the lot number in our <a href="#">Concentration and Expiration Lookup</a> or <a href="#">Certificate of Analysis</a> online tools.)   |
| <b>Storage &amp; Handling</b>                     | The antibody solution should be stored undiluted between 2°C and 8°C, and protected from prolonged exposure to light. <b>Do not freeze.</b>  |
| <b>Application</b>                                | <a href="#">FC - Quality tested</a>  |
| <b>Recommended Usage</b>                          | Each lot of this antibody is quality control tested by <a href="#">immunofluorescent staining with flow cytometric analysis</a> . For flow cytometric staining, the suggested use of this reagent is 5 µl per million cells in 100 µl staining volume or 5 µl per 100 µl of whole blood.   |
| <b>Excitation Laser</b>                           | Blue Laser (488 nm)  |
| <b>Application Notes</b>                          | Clone KPL-1 is reported to recognize the tyrosine sulfation consensus motif of PSGL-1 <sup>1</sup> . Additional reported applications (for the relevant formats) include: Western Blot <sup>1</sup> , immunoprecipitation <sup>2</sup> , immunohistochemical staining of acetone-fixed frozen tissue sections and formalin-fixed paraffin embedded tissue sections <sup>1</sup> , blocks the recognition of PSGL-1 with P- and L-selectin <sup>1</sup> . |
| <b>Application References</b>                     | <ol style="list-style-type: none"> <li>1. Snapp KR, <i>et al.</i> 1998. <i>Blood</i> 91:154.</li> <li>2. Snapp KR, <i>et al.</i> 1998. <i>J. Cell Biol.</i> 142:263.</li> <li>3. Yoshino N, <i>et al.</i> 2000. <i>Exp. Anim. (Tokyo)</i> 49:97. (FC)</li> <li>4. Miyamura K, <i>et al.</i> 2011. <i>J. Gen. Virol.</i> 92:287. <a href="#">PubMed</a></li> <li>5. Cheng Q, <i>et al.</i> 2012. <i>Lupus.</i> 21:632. <a href="#">PubMed</a>.</li> </ol> |
| <b>(PubMed link indicates BioLegend citation)</b> |  |
| <b>RRID</b>                                       | AB_2810496 (BioLegend Cat. No. 328815)<br>AB_2810497 (BioLegend Cat. No. 328816)   |

## Antigen Details

|                           |   |
|---------------------------|---|
| <b>Distribution</b>       | Neutrophils, monocytes, and most lymphocytes  |
| <b>Function</b>           | Mediates the earliest "rolling" of leukocytes on the luminal surface of activated endothelium, and the interaction between leukocytes and activated platelets or other leukocytes found at sites of inflammation. |
| <b>Ligand/Receptor</b>    | CD62P (P-Selectin), CD62E (E-Selectin) and CD62L (L-Selectin)   |
| <b>Cell Type</b>          | Lymphocytes, Monocytes, Neutrophils   |
| <b>Biology Area</b>       | Cell Adhesion, Immunology   |
| <b>Molecular Family</b>   | Adhesion Molecules, CD Molecules  |
| <b>Antigen References</b> | 1. Snapp KR, <i>et al.</i> 1998. <i>Blood</i> 91:154.   |
| <b>Gene ID</b>            | <a href="#">6404</a>  |

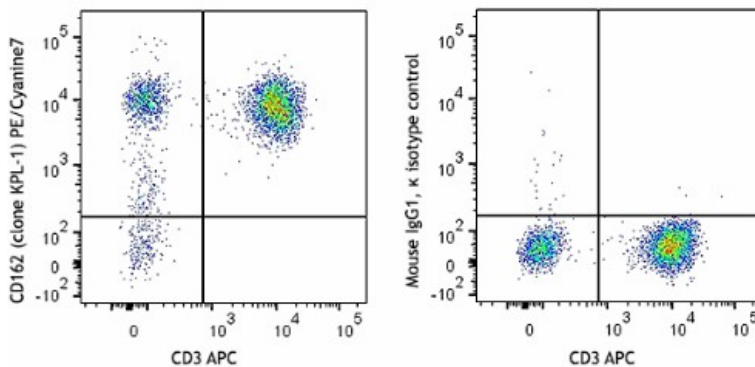
## Related Protocols

[Cell Surface Flow Cytometry Staining Protocol](#)

## Other Formats

Purified anti-human CD162, PE anti-human CD162, Brilliant Violet 421™ anti-human CD162, APC anti-human CD162, APC/Fire™ 750 anti-human CD162, Alexa Fluor® 647 anti-human CD162, PE/Cyanine7 anti-human CD162, PerCP/Cyanine5.5 anti-human CD162, PE/Dazzle™ 594 anti-human CD162, TotalSeq™-A0871 anti-human CD162, TotalSeq™-B0871 anti-human CD162 Antibody, TotalSeq™-C0871 anti-human CD162

## Product Data



Human peripheral blood lymphocytes were stained with CD3 APC and CD162 (clone KPL-1) PE/Cyanine7 (left) or Mouse IgG1, κ PE/Cyanine7 isotype control (right).

For research use only. Not for diagnostic use. Not for resale. BioLegend will not be held responsible for patent infringement or other violations that may occur with the use of our products.

\*These products may be covered by one or more Limited Use Label Licenses (see the BioLegend Catalog or our website, [www.biolegend.com/ordering#license](http://www.biolegend.com/ordering#license)). BioLegend products may not be transferred to third parties, resold, modified for resale, or used to manufacture commercial products, reverse engineer functionally similar materials, or to provide a service to third parties without written approval of BioLegend. By use of these products you accept the terms and conditions of all applicable Limited Use Label Licenses. Unless otherwise indicated, these products are for research use only and are not intended for human or animal diagnostic, therapeutic or commercial use.

BioLegend Inc., 8999 BioLegend Way, San Diego, CA 92121 [www.biolegend.com](http://www.biolegend.com)  
Toll-Free Phone: 1-877-Bio-Legend (246-5343) Phone: (858) 768-5800 Fax: (877) 455-9587