

PE/Dazzle™ 594 anti-human IgD Antibody

Catalog# / Size	348239 / 25 tests 348240 / 100 tests
Clone	IA6-2
Regulatory Status	RUO
Other Names	Ig delta chain C region
Isotype	Mouse IgG2a, κ
Description	IgD, a member of the immunoglobulin (Ig) family, is expressed in naïve B cells. It has 3 Ig-like domains and exists in a transmembrane and a soluble form. In general, IgD is not secreted and usually its expression is lost after the Ig isotype switch. After antigen binding, IgD signals through the CD79a/CD79b (Igα/Igβ) heterodimer, resulting in the activation of the B cell.

Product Details

Verified Reactivity	Human
Antibody Type	Monoclonal
Host Species	Mouse
Immunogen	Human IgD
Formulation	Phosphate-buffered solution, pH 7.2, containing 0.09% sodium azide and BSA (origin USA)
Preparation	The antibody was purified by affinity chromatography and conjugated with PE/Dazzle™ 594 under optimal conditions.
Concentration	Lot-specific (to obtain lot-specific concentration, please enter the lot number in our Concentration and Expiration Lookup or Certificate of Analysis online tools.)
Storage & Handling	The antibody solution should be stored undiluted between 2°C and 8°C, and protected from prolonged exposure to light. Do not freeze.
Application	FC - Quality tested
Recommended Usage	Each lot of this antibody is quality control tested by immunofluorescent staining with flow cytometric analysis . For flow cytometric staining, the suggested use of this reagent is 5 µl per million cells in 100 µl staining volume or 5 µl per 100 µl of whole blood. * PE/Dazzle™ 594 has a maximum excitation of 566 nm and a maximum emission of 610 nm.
Excitation Laser	Blue Laser (488 nm) Green Laser (532 nm)/Yellow-Green Laser (561 nm)
Application Notes	Additional reported applications (for the relevant formats) include: immunohistochemical staining of paraformaldehyde fixed frozen sections ⁴ and spatial biology (IBEX) ^{5,6} .
Application References	<ol style="list-style-type: none"> Chen K, <i>et al.</i> 2009. <i>Nat. Immunol.</i> 10:889. Lee CH, <i>et al.</i> 2005. <i>J. Exp. Med.</i> 203:63. Sutter JA, <i>et al.</i> 2008. <i>Clin. Immunol.</i> 126:282. Li H and Pauza CD. 2015. <i>Eur. J. Immunol.</i> 45:298. (IHC) Radtke AJ, <i>et al.</i> 2020. <i>Proc Natl Acad Sci USA.</i> 117:33455-33465. (SB) PubMed Radtke AJ, <i>et al.</i> 2022. <i>Nat Protoc.</i> 17:378-401. (SB) PubMed
Product Citations	<ol style="list-style-type: none"> Lucas C, <i>et al.</i> 2021. Nature. Online ahead of print. PubMed
RRID	AB_2616989 (BioLegend Cat. No. 348239) AB_2616990 (BioLegend Cat. No. 348240)

Antigen Details

Structure	Exists in a transmembranal and a soluble form
Distribution	Naïve B cells
Function	Antigen binding, B cell activation
Interaction	The CD79a/CD79b heterodimer
Cell Type	B cells
Biology Area	Immunology
Antigen References	1. Geisberger R, <i>et al.</i> 2006. <i>Immunology</i> 118:429. 2. Weller S, <i>et al.</i> 2005. <i>Eur. J. Immunol.</i> 35:2789. 3. Brandtzaeg P and Johansen FE. 2005. <i>Immunol. Rev.</i> 206:32.
Gene ID	3495

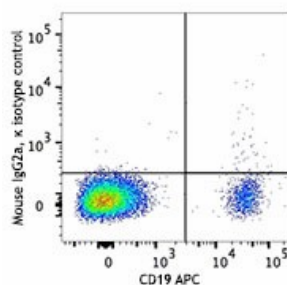
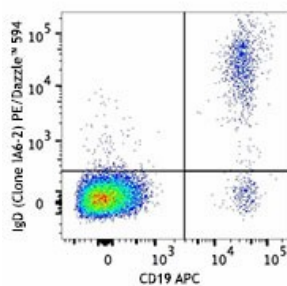
Related Protocols

[Cell Surface Flow Cytometry Staining Protocol](#)

Other Formats

Alexa Fluor® 647 anti-human IgD, PerCP anti-human IgD, Brilliant Violet 605™ anti-human IgD, Alexa Fluor® 700 anti-human IgD, Purified anti-human IgD, PE anti-human IgD, Biotin anti-human IgD, FITC anti-human IgD, PerCP/Cyanine5.5 anti-human IgD, PE/Cyanine7 anti-human IgD, Alexa Fluor® 488 anti-human IgD, APC/Cyanine7 anti-human IgD, Brilliant Violet 510™ anti-human IgD, APC anti-human IgD, Pacific Blue™ anti-human IgD, Brilliant Violet 421™ anti-human IgD, Purified anti-human IgD (Maxpar® Ready), PE/Dazzle™ 594 anti-human IgD, APC/Fire™ 750 anti-human IgD, Brilliant Violet 785™ anti-human IgD, TotalSeq™-A0384 anti-human IgD, TotalSeq™-C0384 anti-human IgD, TotalSeq™-B0384 anti-human IgD, PE/Cyanine5 anti-human IgD, TotalSeq™-D0384 anti-human IgD

Product Data



Human peripheral blood lymphocytes were stained with CD19 APC and IgD (clone IA6-2) PE/Dazzle™ 594 (top) or mouse IgG2a, κ PE/Dazzle™ 594 isotype control (bottom).

*These products may be covered by one or more Limited Use Label Licenses (see the BioLegend Catalog or our website, www.biolegend.com/ordering#license). BioLegend products may not be transferred to third parties, resold, modified for resale, or used to manufacture commercial products, reverse engineer functionally similar materials, or to provide a service to third parties without written approval of BioLegend. By use of these products you accept the terms and conditions of all applicable Limited Use Label Licenses. Unless otherwise indicated, these products are for research use only and are not intended for human or animal diagnostic, therapeutic or commercial use.

BioLegend Inc., 8999 BioLegend Way, San Diego, CA 92121 www.biolegend.com
Toll-Free Phone: 1-877-Bio-Legend (246-5343) Phone: (858) 768-5800 Fax: (877) 455-9587