

Purified anti-human CD326 (EpCAM) (Maxpar[®] Ready) Antibody

Catalog# / Size	324229 / 100 µg
Clone	9C4
Regulatory Status	RUO
Other Names	Ep-CAM, tumor associated calcium signal transducer 1, epithelial cell surface antigen, epithelial glycoprotein 2, EGP2, adenocarcinoma associated antigen, TROP1
Isotype	Mouse IgG2b, κ
Description	CD326 is also known as Ep-CAM, tumor associated calcium signal transducer 1, epithelial cell surface antigen, epithelial glycoprotein 2, EGP2, adenocarcinoma associated antigen, and TROP1. CD326 is a type I transmembrane protein containing six disulfide bridges and one THYRO domain. This cell surface glycosylated 40 kD protein is highly expressed in bone marrow, colon, lung, and most normal epithelial cells and is expressed on carcinomas of gastrointestinal origin. Recently, it has been reported that CD326 expression occurs during the early steps of erythropoiesis. CD326 functions as a homotypic calcium-independent cell adhesion molecule and is believed to be involved in carcinogenesis by its ability to induce genes involved in cellular metabolism and proliferation. CD326 antigen is an immunotherapeutic target for the treatment of human carcinomas.

Product Details

Verified Reactivity	Human
Antibody Type	Monoclonal
Host Species	Mouse
Immunogen	DU.4475 breast carcinoma
Formulation	Phosphate-buffered solution, pH 7.2, containing 0.09% sodium azide and EDTA.
Preparation	The antibody was purified by affinity chromatography.
Concentration	1.0 mg/ml
Storage & Handling	The antibody solution should be stored undiluted between 2°C and 8°C.
Application	FC - Quality tested CyTOF[®] - Verified
Recommended Usage	This product is suitable for use with the Maxpar[®] Metal Labeling Kits . For metal labeling using Maxpar [®] Ready antibodies, proceed directly to the step to Partially Reduce the Antibody by adding 100 µl of Maxpar [®] Ready antibody to 100 µl of 4 mM TCEP-R in a 50 kDa filter and continue with the protocol. Always refer to the latest version of Maxpar [®] User Guide when conjugating Maxpar [®] Ready antibodies.
Application Notes	Additional reported applications (for the relevant formats) include: immunofluorescence, immunohistochemistry ³ , and spatial biology (IBEX) ^{4,5} .
Additional Product Notes	Maxpar [®] is a registered trademark of Standard BioTools Inc.
Application References	<ol style="list-style-type: none"> Lammers R, <i>et al.</i> 2002. <i>Exp. Hematol.</i> 30:537. Schultz LD, <i>et al.</i> 2010. <i>P. Natl. Acad. Sci. USA</i> 107:13022. PubMed Human Protein Atlas http://www.proteinatlas.org/ENSG00000119888/antibody (IHC) Radtke AJ, <i>et al.</i> 2020. <i>Proc Natl Acad Sci USA.</i> 117:33455-33465. (SB) PubMed Radtke AJ, <i>et al.</i> 2022. <i>Nat Protoc.</i> 17:378-401. (SB) PubMed
(PubMed link indicates BioLegend citation)	
Product Citations	<ol style="list-style-type: none"> Stras SF, <i>et al.</i> 2020. <i>Developmental Cell.</i> 51(3):357-373.e5.. PubMed Roussel M, <i>et al.</i> 2021. <i>Cell Reports Medicine.</i> 2(6):100291. PubMed Fawkner-Corbett D, <i>et al.</i> 2021. <i>Cell.</i> 184(3):810-826.e23. PubMed

Antigen Details

Structure	Type I transmembrane protein, contains six disulfide bridges, one THYRO domain, approximate molecular weight 40 kD.
Distribution	Highly expressed in bone marrow, colon, lung, and most normal epithelial cells. Also highly expressed on carcinomas of gastrointestinal origin. Expressed during early erythrogenesis.
Function	Homotypic calcium-independent cell adhesion. CD326 is believed to be involved in carcinogenesis by its ability to induce genes involved in cellular metabolism and proliferation.
Modification	Glycosylated.
Cell Type	Embryonic Stem Cells, Epithelial cells
Biology Area	Cell Biology, Immunology, Stem Cells
Molecular Family	Adhesion Molecules, CD Molecules
Antigen References	1. Strnad J, <i>et al.</i> 1989. <i>Cancer Res.</i> 49:314. 2. Munz M, <i>et al.</i> 2004. <i>Oncogene</i> 23:5748. 3. Rao CG, <i>et al.</i> 2005. <i>Int. J. Oncol.</i> 27:49.
Gene ID	4072

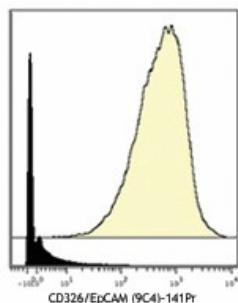
Related Protocols

[Cell Surface Flow Cytometry Staining Protocol](#)

Other Formats

Purified anti-human CD326 (EpCAM), FITC anti-human CD326 (EpCAM), PE anti-human CD326 (EpCAM), APC anti-human CD326 (EpCAM), Alexa Fluor® 488 anti-human CD326 (EpCAM), Alexa Fluor® 647 anti-human CD326 (EpCAM), PerCP/Cyanine5.5 anti-human CD326 (EpCAM), Biotin anti-human CD326 (EpCAM), Pacific Blue™ anti-human CD326 (EpCAM), Brilliant Violet 421™ anti-human CD326 (EpCAM), PE/Cyanine7 anti-human CD326 (EpCAM), Brilliant Violet 605™ anti-human CD326 (EpCAM), Brilliant Violet 650™ anti-human CD326 (EpCAM), Alexa Fluor® 594 anti-human CD326 (EpCAM), Purified anti-human CD326 (EpCAM) (Maxpar® Ready), PE/Dazzle™ 594 anti-human CD326 (EpCAM), APC/Fire™ 750 anti-human CD326 (EpCAM), Brilliant Violet 510™ anti-human CD326 (EpCAM), Brilliant Violet 785™ anti-human CD326 (EpCAM), Brilliant Violet 711™ anti-human CD326 (EpCAM), TotalSeq™-A0123 anti-human CD326 (Ep-CAM), APC/Cyanine7 anti-human CD326 (Ep-CAM), Alexa Fluor® 700 anti-human CD326 (EpCAM), TotalSeq™-C0123 anti-human CD326 (Ep-CAM), TotalSeq™-B0123 anti-human CD326 (Ep-CAM), PE/Cyanine5 anti-human CD326 (Ep-CAM), TotalSeq™-D0123 anti-human CD326 (Ep-CAM)

Product Data



Human HT-29 colon carcinoma cells (top) and human Jurkat T cells (bottom) stained with 141Pr-anti-CD326 (9C4). Data provided by DVS Sciences.

BioLegend products may not be transferred to third parties, resold, modified for resale, or used to manufacture commercial products, reverse engineer functionally similar materials, or to provide a service to third parties without written approval of BioLegend. By use of these products you accept the terms and conditions of all applicable Limited Use Label Licenses. Unless otherwise indicated, these products are for research use only and are not intended for human or animal diagnostic, therapeutic or commercial use.

BioLegend Inc., 8999 BioLegend Way, San Diego, CA 92121 www.biolegend.com
Toll-Free Phone: 1-877-Bio-Legend (246-5343) Phone: (858) 768-5800 Fax: (877) 455-9587