

## Purified anti-human CD56 (NCAM) Antibody

<b>Catalog# / Size</b>	304601 / 25 µg 304602 / 100 µg
<b>Clone</b>	MEM-188
<b>Regulatory Status</b>	RUO
<b>Workshop</b>	VI NK26
<b>Other Names</b>	NCAM, Leu-19, NKH1
<b>Isotype</b>	Mouse IgG2a, κ
<b>Description</b>	CD56 is a single transmembrane glycoprotein also known as N-CAM (Neural Cell Adhesion Molecule), Leu-19, or NKH1. It is a member of the Ig superfamily. The 140 kD isoform is expressed on NK cells and NK-T cells. CD56 is also expressed in the brain (cerebellum and cortex) and at neuromuscular junctions. Certain large granular lymphocyte (LGL) leukemias, small-cell lung carcinomas, neuronal derived tumors, myelomas, and myeloid leukemias also express CD56. CD56 plays a role in homophilic and heterophilic adhesion via binding to itself or heparin sulfate.

### Product Details

---

<b>Verified Reactivity</b>	Human
<b>Reported Reactivity</b>	Cow, Pig
<b>Antibody Type</b>	Monoclonal
<b>Host Species</b>	Mouse
<b>Immunogen</b>	KG-1 human acute myelogenous leukemia cell line
<b>Formulation</b>	Phosphate-buffered solution, pH 7.2, containing 0.09% sodium azide.
<b>Preparation</b>	The antibody was purified by affinity chromatography.
<b>Concentration</b>	0.5 mg/ml
<b>Storage &amp; Handling</b>	The antibody solution should be stored undiluted between 2°C and 8°C.
<b>Application</b>	<a href="#">FC - Quality tested</a> <a href="#">IHC-P, IP, WB. - Reported in the literature, not verified in house</a>
<b>Recommended Usage</b>	Each lot of this antibody is quality control tested by <a href="#">immunofluorescent staining with flow cytometric analysis</a> . For flow cytometric staining, the suggested use of this reagent is ≤ 2.0 µg per million cells in 100 µl volume. It is recommended that the reagent be titrated for optimal performance for each application.
<b>Application Notes</b>	Additional reported applications (for the relevant formats) include: immunoprecipitation, immunohistochemical staining of formalin-fixed paraffin-embedded tissue sections, and Western blotting (non-reducing).
<b>Application References</b>	1. Kishimoto T, <i>et al.</i> Eds. 1997. Leucocyte Typing VI. Garland Publishing Inc. London.
<b>(PubMed link indicates BioLegend citation)</b>	
<b>Product Citations</b>	1. Korn MA, <i>et al.</i> 2020. J Immunol. 205:2595. <a href="#">PubMed</a> 2. de Groot N, <i>et al.</i> 2021. Porcine Health Manag. 7:60. <a href="#">PubMed</a> 3. Mann ER, <i>et al.</i> 2020. Sci Immunol. :5. <a href="#">PubMed</a> 4. Zhan X, <i>et al.</i> 2020. Journal of Experimental Medicine. 217(5):e20191340. <a href="#">PubMed</a> 5. Zeniou M, <i>et al.</i> 2015. PLoS One. 10: 0134793. <a href="#">PubMed</a> 6. Peng T, <i>et al.</i> 2021. Front Immunol. 12:735643. <a href="#">PubMed</a> 7. De Maeyer RPH, <i>et al.</i> 2020. Nat Immunol. 21:615. <a href="#">PubMed</a>

8. Ravell JC, *et al.* 2020. *J Clin Invest.* 130:507. [PubMed](#)  
9. Alhaj Hussien K, *et al.* 2020. *Front Immunol.* 11:579776. [PubMed](#)

**RRID** AB\_314443 (BioLegend Cat. No. 304601)  
AB\_314444 (BioLegend Cat. No. 304602)

## Antigen Details

---

<b>Structure</b>	Ig superfamily, single transmembrane or GPI-anchored glycoprotein, 175-185 kD
<b>Distribution</b>	NK cells, T subset, neural tissue, some LGL and myeloid leukemias
<b>Function</b>	Adhesion
<b>Ligand/Receptor</b>	Heparin sulfate
<b>Cell Type</b>	Leukemia, Mesenchymal Stem Cells, Neurons, NK cells, T cells
<b>Biology Area</b>	Cell Adhesion, Cell Biology, Costimulatory Molecules, Immunology, Innate Immunity, Neuroscience, Stem Cells, Synaptic Biology
<b>Molecular Family</b>	Adhesion Molecules, CD Molecules
<b>Antigen References</b>	1. Lanier L, <i>et al.</i> 1991. <i>J. Immunol.</i> 146:4421. 2. Hemperly J, <i>et al.</i> 1990. <i>J. Mol. Neurosci.</i> 2:71. 3. Cremer H, <i>et al.</i> 1994. <i>Nature</i> 367:455.
<b>Gene ID</b>	<a href="#">4684</a>

## Related Protocols

---

[Cell Surface Flow Cytometry Staining Protocol](#)

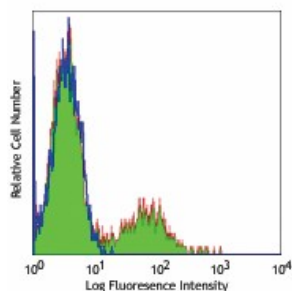
## Other Formats

---

APC anti-human CD56 (NCAM), FITC anti-human CD56 (NCAM), PE anti-human CD56 (NCAM), PE/Cyanine5 anti-human CD56 (NCAM), Purified anti-human CD56 (NCAM), Alexa Fluor® 488 anti-human CD56 (NCAM), Alexa Fluor® 647 anti-human CD56 (NCAM), Biotin anti-human CD56 (NCAM), Pacific Blue™ anti-human CD56 (NCAM), PE/Cyanine7 anti-human CD56 (NCAM), PerCP/Cyanine5.5 anti-human CD56 (NCAM), Ultra-LEAF™ Purified anti-human CD56 (NCAM)

## Product Data

---



Human peripheral blood lymphocytes stained with purified MEM-188, followed by anti-mouse IgGs FITC

For research use only. Not for diagnostic use. Not for resale. BioLegend will not be held responsible for patent infringement or other violations that may occur with the use of our products.

\*These products may be covered by one or more Limited Use Label Licenses (see the BioLegend Catalog or our website, [www.biolegend.com/ordering#license](http://www.biolegend.com/ordering#license)). BioLegend products may not be transferred to third parties, resold, modified for resale, or used to manufacture commercial products, reverse engineer functionally similar materials, or to provide a service to third parties without written approval of BioLegend. By use of these products you accept the terms and conditions of all applicable Limited Use Label Licenses. Unless otherwise indicated, these products are for research use only and are not intended for human or animal diagnostic, therapeutic or commercial use.

BioLegend Inc., 8999 BioLegend Way, San Diego, CA 92121 [www.biolegend.com](http://www.biolegend.com)  
Toll-Free Phone: 1-877-Bio-Legend (246-5343) Phone: (858) 768-5800 Fax: (877) 455-9587