

Purified anti-human HLA-DR Antibody

Catalog# / Size	307602 / 100 µg
Clone	L243
Regulatory Status	RUO
Other Names	Major Histocompatibility Class II, MHC class II
Isotype	Mouse IgG2a, κ
Description	HLA-DR is a heterodimeric cell surface glycoprotein comprised of a 36 kD α (heavy) chain and a 27 kD β (light) chain. It is expressed on B cells, activated T cells, monocytes/macrophages, dendritic cells, and other non-professional APCs. In conjunction with the CD3/TCR complex and CD4 molecules, HLA-DR is critical for efficient peptide presentation to CD4 ⁺ T cells.

Product Details

Verified Reactivity	Human, Cynomolgus, Rhesus
Reported Reactivity	African Green, Baboon, Chimpanzee, Dog, Common Marmoset, Squirrel Monkey, Cotton-topped Tamarin
Antibody Type	Monoclonal
Host Species	Mouse
Formulation	Phosphate-buffered solution, pH 7.2, containing 0.09% sodium azide.
Preparation	The antibody was purified by affinity chromatography.
Concentration	0.5 mg/ml
Storage & Handling	The antibody solution should be stored undiluted between 2°C and 8°C.
Application	FC - Quality tested CyTOF® - Verified IP, WB, Block, IHC-F - Reported in the literature, not verified in house
Recommended Usage	Each lot of this antibody is quality control tested by immunofluorescent staining with flow cytometric analysis . For flow cytometric staining, the suggested use of this reagent is ≤ 0.5 µg per 10 ⁶ cells in 100 µl volume or 100 µl whole blood. It is recommended that the reagent be titrated for optimal performance for each application.
Application Notes	The L243 monoclonal antibody reacts with the HLA-DR antigen, a member of MHC class II molecules. It does not cross react with HLA-DP and HLA-DQ. Clone L243 binds a conformational epitope on HLA-DRα which depends on the correct folding of the αβ heterodimer. ¹⁹ Additional reported applications (for the relevant formats) include: immunoprecipitation ⁸ , Western blotting ⁸ , <i>in vitro</i> blocking of mixed lymphocyte reactions ^{9,10} , depletion of MHC class II cells ⁷ , immunohistochemical staining of acetone-fixed frozen sections ^{4,5} , and spatial biology (IBEX) ^{21,22} . For sensitive functional assays, we recommend using the Ultra-LEAF™ purified antibody (Endotoxin < 0.01 EU/µg, Azide-Free, 0.2 µm filtered) (Cat. No. 307648, 307665 - 307669).

Application References

(PubMed link indicates BioLegend citation)

1. Brodsky F. 1984. *Immunogenetics* 19:179.
2. Robbins P, et al. 1987. *Human Immunol.* 18:301.
3. Stites D, et al. 1986. *Clin. Immunol. Immunopathol.* 38:161.
4. Warnke R, et al. 1980. *J. Histochem. Cytochem.* 28:771. (IHC)
5. Engleman E, et al. 1981. *P. Natl. Acad. Sci. USA* 78:1791. (IHC)
6. Zipf T, et al. 1981. *Cancer Res.* 41:4786.
7. Goodier M, et al. 2000. *J. Immunol.* 165:139. (Depletion)
8. Esser M, et al. 2001. *J. Virol.* 75:6173. (IP, WB)
9. Kalka-Moll WM, et al. 2002. *J. Immunol.* 169:6149. (Block)
10. Wang RF, et al. 1999. *Science* 284:1351. (Block)
11. Zaba LC, et al. 2007. *J. Exp. Med.* 204:3183. [PubMed](#)

12. Fujita H, *et al.* 2009. *P. Natl. Acad. Sci. USA* 106:21795. [PubMed](#)
13. Charles N, *et al.* 2010. *Nat. Med.* 16:701. (FC) [PubMed](#)
14. Goncalves RM, *et al.* 2010. *Infect. Immun.* 78:4763. [PubMed](#)
15. Yoshino N, *et al.* 2000. *Exp. Anim. (Tokyo)* 49:97. (FC)
16. Kim WK, *et al.* 2006. *Am. J. Pathol.* 168:822. (FC)
17. Stein R, *et al.* 2011. *Leuk. Lymphoma* 52:273.
18. Galkowska H, *et al.* 1996. *Vet. Immunol. Immunopathol.* 53:329.
19. Moro M, *et al.* 2005. *BMC Immunol.* 6:24.
20. Lauterbach N, *et al.* 2014. *Mol Immunol.* 59:19. [PubMed](#)
21. Radtke AJ, *et al.* 2020. *Proc Natl Acad Sci USA.* 117:33455-33465. (SB) [PubMed](#)
22. Radtke AJ, *et al.* 2022. *Nat Protoc.* 17:378-401. (SB) [PubMed](#)

Product Citations

1. Fu J *et al.* 2019. *Cell stem cell.* 24(2):227-239 . [PubMed](#)
2. Dallari S, *et al.* 2017. *Nat Commun.* 8:14830. [PubMed](#)
3. Nagamatsu T, *et al.* 2009. *Hum Reprod.* 24:3160. [PubMed](#)
4. Rouers A, *et al.* 2021. *Cell Rep Med.* 2:100278. [PubMed](#)
5. Melo-Gonzalez F, *et al.* 2018. *J Biol Chem.* 293:8543. [PubMed](#)
6. Lu Y, *et al.* 2017. *Cell Mol Immunol.* 1.054166667. [PubMed](#)
7. Greenshields-Watson A, *et al.* 2020. *Cell Rep.* 32:107885. [PubMed](#)
8. Taft J, *et al.* 2021. *Cell.* 184(17):4447-4463.e20. [PubMed](#)
9. Wagner J *et al.* 2019. *Cell.* 177(5):1330-1345 . [PubMed](#)
10. Ahmed R *et al.* 2019. *Cell.* 177(6):1583-1599 . [PubMed](#)
11. Wang W, *et al.* 2018. *Cancer Cell.* 34:757. [PubMed](#)
12. Arnold IC, *et al.* 2018. *J Exp Med.* 215:2055. [PubMed](#)
13. Korn MA, *et al.* 2020. *J Immunol.* 205:2595. [PubMed](#)
14. Lauterbach N, *et al.* 2014. *Mol Immunol.* 59:19. [PubMed](#)
15. Cao Q, *et al.* 2018. *Am J Physiol Renal Physiol.* 314:F561. [PubMed](#)
16. Liu R, *et al.* 2022. *Curr Protoc.* 2:e350. [PubMed](#)
17. Santos R, *et al.* 2017. *Nat Commun.* . 10.1038/s41467-017-01760-5. [PubMed](#)
18. Kremenovic M, *et al.* 2020. *Cancers (Basel).* 12:. [PubMed](#)
19. Mann ER, *et al.* 2020. *Sci Immunol.* :5. [PubMed](#)
20. Kaufmann M, *et al.* 2021. *Med.* 2(3):296-312.e8. [PubMed](#)
21. Tal MC, *et al.* 2020. *MBio.* 11:00. [PubMed](#)
22. Mirandola L, *et al.* 2017. *Oncotarget.* 8:74378. [PubMed](#)
23. Winkler M, *et al.* 2017. *PLoS One.* 10.1371/journal.pone.0182427. [PubMed](#)
24. Heesters BA, *et al.* 2021. *J Exp Med.* 218:. [PubMed](#)
25. Kondo H, *et al.* 2022. *Front Immunol.* 13:836923. [PubMed](#)
26. Parker R, *et al.* 2020. *bioRxiv.* . [PubMed](#)
27. Salvat R, *et al.* 2014. *J Vis Exp.* 85: 51308. [PubMed](#)
28. Gruber CN, *et al.* 2020. *Immunity.* 53(3):672-684. [PubMed](#)
29. Li Y, *et al.* 2019. *Front Immunol.* 0.460416667. [PubMed](#)
30. Wu Y, *et al.* 2018. *J Immunol.* 200:1627. [PubMed](#)
31. Nolan E, *et al.* 2017. *Sci Transl Med.* 9:eaal4925. [PubMed](#)
32. Yang R, *et al.* 2020. *Cell.* 183(7):1826-1847.e31. [PubMed](#)
33. Martin JC, *et al.* 2020. *Cell.* 178(6):1493-1508.e20.. [PubMed](#)
34. Raffray L, *et al.* 2020. *Immunology.* 159:88. [PubMed](#)
35. Gañán-Gómez I, *et al.* 2022. *Nat Med.* . [PubMed](#)
36. Syrimi E, *et al.* 2021. *iScience.* 24:103215. [PubMed](#)
37. O'Boyle KC, *et al.* 2020. *Methods Mol Biol.* 2111:1. [PubMed](#)
38. Borges TJ, *et al.* 2018. *Nat Commun.* 9:3482. [PubMed](#)
39. Eldredge LC, *et al.* 2019. *Am J Physiol Lung Cell Mol Physiol.* 317:L49. [PubMed](#)
40. Bruno TC, *et al.* 2017. *Cancer Immunol Res.* 0.831944444. [PubMed](#)
41. Olin A, *et al.* 2018. *Cell.* 174:1277. [PubMed](#)
42. Gravastrand CS, *et al.* 2019. *J Immunol.* 203(4). [PubMed](#)
43. Tripathi T, *et al.* 2019. *Immunohorizons.* 0.201388889. [PubMed](#)
44. Baskar R, *et al.* 2022. *Cell Rep Methods.* 2:. [PubMed](#)
45. Del Alcazar D, *et al.* 2019. *Cell Rep.* 28:3047. [PubMed](#)
46. Sattler A, *et al.* 2021. *Am J Transplant.* 21:87. [PubMed](#)
47. Han L, *et al.* 2019. *Haematologica.* 10.3324/haematol.2018.205534. [PubMed](#)
48. Tsuruta M, *et al.* 2018. *Oncoimmunology.* 7:e1415687. [PubMed](#)
49. Khosravi-Maharlooei M, *et al.* 2021. *J Autoimmun.* 119:102612. [PubMed](#)
50. Macmillan ML, *et al.* 2021. *Blood Adv.* 5:1425. [PubMed](#)
51. Henrick BM, *et al.* 2021. *Cell.* . [PubMed](#)
52. Roussel M, *et al.* 2021. *Cell Reports Medicine.* 2(6):100291. [PubMed](#)
53. Zavidij O, *et al.* 2020. *Nat Cancer.* 0.384027778. [PubMed](#)
54. Chng MHY, *et al.* 2020. *Immunity.* 51(6):1119-1135.e5.. [PubMed](#)
55. Correia CR, *et al.* 2017. *Biomater Sci.* 5:551. [PubMed](#)
56. Aljabri A, *et al.* 2019. *Cell Death Dis.* 0.579861111. [PubMed](#)
57. Schwabenland M, *et al.* 2021. *Immunity.* . [PubMed](#)
58. Bengsch B *et al.* 2018. *Immunity.* 48(5):1029-1045 . [PubMed](#)
59. Evrard M *et al.* 2018. *Immunity.* 48(2):364-379 . [PubMed](#)
60. Salvany-Celades M *et al.* 2019. *Cell Rep.* 27(9):2537-2547 . [PubMed](#)
61. Song S, *et al.* 2021. *Front Immunol.* 12:705140. [PubMed](#)
62. Chevrier S, *et al.* 2021. *Cell Reports Medicine.* 2(1):100166. [PubMed](#)
63. Xie CB, *et al.* 2020. *J Clin Invest.* 130:3437. [PubMed](#)
64. Zeiner PS, *et al.* 2018. *Acta Neuropathol Commun.* 6:18. [PubMed](#)
65. Ran LJ, *et al.* 2018. *Mol Med Rep.* 18:723. [PubMed](#)
66. Sander J *et al.* 2017. *Immunity.* 47(6):1051-1066 . [PubMed](#)

67. Stensland ZC, *et al.* 2022. *iScience*. 25:103626. [PubMed](#)
68. Dinh HQ, *et al.* 2020. *Immunity*. 53(2):319-334.e6. [PubMed](#)
69. Chevrier S, *et al.* 2018. *Cell Syst*. 0.675. [PubMed](#)
70. Joas S, *et al.* 2020. *Cell Rep*. 30:2261. [PubMed](#)
71. Scholzen A, *et al.* 2019. *Front Immunol*. 0.560416667. [PubMed](#)
72. Lavin Y *et al.* 2017. *Cell*. 169(4):750-765. [PubMed](#)
73. Dutertre CA, *et al.* 2020. *Immunity*. 51(3):573-589.e8.. [PubMed](#)
74. Chiou SH, *et al.* 2021. *Immunity*. 54:586. [PubMed](#)

RRID AB_314680 (BioLegend Cat. No. 307602)

Antigen Details

Structure	Ig superfamily, MHC class II, heterodimeric transmembrane protein, 36 kD heavy and 27 kD light chain
Distribution	B cells, activated T cells, monocytes/macrophages, dendritic cells, other APCs
Function	Peptide presentation
Ligand/Receptor	CD3/TCR, CD4
Cell Type	Antigen-presenting cells, B cells, Dendritic cells, Macrophages, Monocytes, T cells, Tregs
Biology Area	Immunology, Innate Immunity
Molecular Family	MHC Antigens
Antigen References	<ol style="list-style-type: none"> 1. Levacher M, <i>et al.</i> 1990. <i>Clin. Exp. Immunol</i>. 81:177. 2. Terstappen L, <i>et al.</i> 1990. <i>J. Leukocyte Biol</i>. 48:138. 3. Edwards JA, <i>et al.</i> 1986. <i>J. Immunol</i>. 137:490. 4. van Es A, <i>et al.</i> 1984. <i>Transplantation</i> 37:65. 5. O'Doherty U, <i>et al.</i> 1994. <i>Immunology</i> 82:487. 6. Thomas R, <i>et al.</i> 1994. <i>J. Immunol</i>. 153:4016. 7. Grouard G, <i>et al.</i> 1996. <i>Nature</i> 384:364.
Gene ID	3122 3123

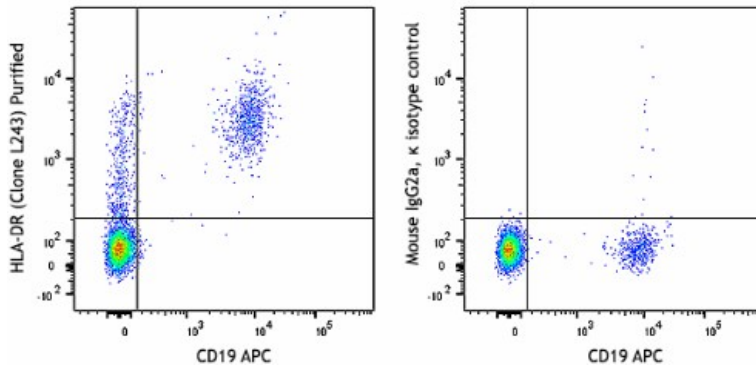
Related Protocols

[Cell Surface Flow Cytometry Staining Protocol](#)

Other Formats

APC anti-human HLA-DR, FITC anti-human HLA-DR, PE anti-human HLA-DR, PE/Cyanine5 anti-human HLA-DR, Purified anti-human HLA-DR, Biotin anti-human HLA-DR, PE/Cyanine7 anti-human HLA-DR, APC/Cyanine7 anti-human HLA-DR, Alexa Fluor® 488 anti-human HLA-DR, Alexa Fluor® 647 anti-human HLA-DR, Pacific Blue™ anti-human HLA-DR, Alexa Fluor® 700 anti-human HLA-DR, PerCP anti-human HLA-DR, PerCP/Cyanine5.5 anti-human HLA-DR, Brilliant Violet 605™ anti-human HLA-DR, Brilliant Violet 421™ anti-human HLA-DR, Brilliant Violet 570™ anti-human HLA-DR, Brilliant Violet 711™ anti-human HLA-DR, Brilliant Violet 785™ anti-human HLA-DR, Brilliant Violet 510™ anti-human HLA-DR, Ultra-LEAF™ Purified anti-human HLA-DR, Brilliant Violet 650™ anti-human HLA-DR, Purified anti-human HLA-DR (Maxpar® Ready), PE/Dazzle™ 594 anti-human HLA-DR, APC/Fire™ 750 anti-human HLA-DR, TotalSeq™-A0159 anti-human HLA-DR, TotalSeq™-B0159 anti-human HLA-DR, TotalSeq™-C0159 anti-human HLA-DR, Brilliant Violet 750™ anti-human HLA-DR, APC/Fire™ 810 anti-human HLA-DR, PE/Fire™ 640 anti-human HLA-DR, Spark Violet™ 538 anti-human HLA-DR Antibody, KIRAVIA Blue 520™ anti-human HLA-DR, TotalSeq™-D0159 anti-human HLA-DR, PE/Fire™ 810 anti-human HLA-DR, GMP PE/Dazzle™ 594 anti-human HLA-DR, Spark Violet™ 423 anti-human HLA-DR, GMP FITC anti-human HLA-DR, GMP APC anti-human HLA-DR, GMP PE/Cyanine7 anti-human HLA-DR, GMP Pacific Blue™ anti-human HLA-DR, GMP APC/Fire™ 750 anti-human HLA-DR, Spark Violet™ 500 anti-human HLA-DR

Product Data



Human peripheral blood lymphocytes were stained with CD19 APC and HLA-DR (clone L243) Purified (left) or Purified mouse IgG2a, κ isotype control (right) followed by anti-mouse IgG FITC.

For research use only. Not for diagnostic use. Not for resale. BioLegend will not be held responsible for patent infringement or other violations that may occur with the use of our products.

*These products may be covered by one or more Limited Use Label Licenses (see the BioLegend Catalog or our website, www.biolegend.com/ordering#license). BioLegend products may not be transferred to third parties, resold, modified for resale, or used to manufacture commercial products, reverse engineer functionally similar materials, or to provide a service to third parties without written approval of BioLegend. By use of these products you accept the terms and conditions of all applicable Limited Use Label Licenses. Unless otherwise indicated, these products are for research use only and are not intended for human or animal diagnostic, therapeutic or commercial use.

BioLegend Inc., 8999 BioLegend Way, San Diego, CA 92121 www.biolegend.com
 Toll-Free Phone: 1-877-Bio-Legend (246-5343) Phone: (858) 768-5800 Fax: (877) 455-9587