

Spark UV™ 387 anti-mouse Ly-6G Antibody

Catalog# / Size	127677 / 25 µg 127678 / 100 µg
Clone	1A8
Regulatory Status	RUO
Other Names	Lymphocyte antigen 6 complex, locus G
Isotype	Rat IgG2a, κ
Description	Lymphocyte antigen 6 complex, locus G (Ly-6G), a 21-25 kD GPI-anchored protein, is expressed on the majority of myeloid cells in bone marrow and peripheral granulocytes.

Product Details

Verified Reactivity	Mouse
Antibody Type	Monoclonal
Host Species	Rat
Immunogen	Ly-6G transfected EL-4J cell line.
Formulation	Phosphate-buffered solution, pH 7.2, containing 0.09% sodium azide
Preparation	The antibody was purified by affinity chromatography and conjugated with Spark UV™ 387 under optimal conditions.
Concentration	0.5 mg/mL
Storage & Handling	The antibody solution should be stored undiluted between 2°C and 8°C, and protected from prolonged exposure to light. Do not freeze.
Application	FC - Quality tested
Recommended Usage	Each lot of this antibody is quality control tested by immunofluorescent staining with flow cytometric analysis . For flow cytometric staining, the suggested use of this reagent is ≤ 1.0 µg per million cells in 100 µL volume. It is recommended that the reagent be titrated for optimal performance for each application. * Spark UV™ 387 has a maximum excitation of 351 nm and a maximum emission of 387 nm.
Excitation Laser	Ultraviolet Laser (355 nm)
Application Notes	While 1A8 recognizes only Ly-6G, clone RB6-8C5 recognizes both Ly-6G and Ly-6C. Clone RB6-8C5 binds with high affinity to mouse Ly-6G molecules and to a lower extent to Ly-6C ¹⁵ . Clone RB6-8C5 impairs the binding of anti-mouse Ly-6G clone 1A8 ¹⁵ . However, clone RB6-8C5 is able to stain in the presence of anti-mouse Ly-6C clone HK1.4 ¹⁶ . Additional reported applications (for the relevant formats) include: immunohistochemistry ⁹ of frozen sections ¹⁰ and paraffin-embedded sections ¹¹ , depletion ^{4, 12-14} , and spatial biology (IBEX) ^{20,21} . The Ultra-LEAF™ purified antibody (Endotoxin < 0.01 EU/µg, Azide-Free, 0.2 µm filtered) is recommended for <i>in vivo</i> studies or highly sensitive assays (Cat. No. 127632, 127649, 127650, 127661 and 127662).

Application References

(PubMed link indicates BioLegend citation)

1. Fleming TJ, *et al.* 1993. *J. Immunol.* 151:2399. (FC)
2. Daley JM, *et al.* 2008. *J. Leukocyte Biol.* 83:1. (FC)
3. Dietlin TA, *et al.* 2007. *J. Leukocyte Biol.* 81:1205. (FC)
4. Daley J, *et al.* 2007. *J. Leukocyte Biol.* doi:10.1189. (Deplete) [PubMed](#)
5. Tadagavadi RK, *et al.* 2010. *J. Immunol.* 185:4904. [PubMed](#)
6. Sumagin R, *et al.* 2010. *J. Immunol.* 185:7057. [PubMed](#)
7. Guiducci C, *et al.* 2010. *J. Exp Med.* 207:2931. [PubMed](#)
8. Fujita M, *et al.* 2011. *Cancer Res.* 71:2664. [PubMed](#)
9. Van Leeuwen, *et al.* 2008. *Arterioscler. Thromb. Vasc. Biol.* 28:84. (IHC)

10. Kowanetz M, *et al.* 2010. *P. Natl. Acad. Sci. USA* 107:21248. [supplementary data] (IHC)
11. Esbona K, *et al.* 2016. *Breast Cancer Res.* 18:35. (IHC)
12. Wojtasiak M, *et al.* 2010. *J. Gen. Virol.* 91:2158. (FC, Deplete)
13. Jaeger BN, *et al.* 2012. *J. Exp. Med.* 209:565. (Deplete)
14. Wozniak KL, *et al.* 2012. *BMC Immunol.* 13:65 (FC, Deplete)
15. Ribechini E, *et al.* 2009. *Eur. J. Immunol.* 39:3538.
16. Ng LG, *et al.* 2011. *J Invest. Dermatol.* 131:2058. [PubMed](#)
17. Ma C, *et al.* 2012. *J. Leukoc. Biol.* 92:1199.
18. McCartney-Francis, N, *et al.* 2014. *J Leukoc. Biol.* 96:917. [PubMed](#)
19. Her Z, *et al.* 2014. *EMBO Mol. Med.* 7:24. [PubMed](#)
20. Radtke AJ, *et al.* 2020. *Proc Natl Acad Sci U S A.* 117:33455-65. (SB) [PubMed](#)
21. Radtke AJ, *et al.* 2022. *Nat Protoc.* 17:378-401. (SB) [PubMed](#)

RRID AB_2924466 (BioLegend Cat. No. 127677)
 AB_2924466 (BioLegend Cat. No. 127678)

Antigen Details

Structure	A 21-35 kD GPI-anchored membrane protein
Distribution	Expressed on the majority of myeloid cells in bone marrow and peripheral granulocytes. The monoclonal antibody RB6-8C5 recognizes both Ly-6G and Ly-6C.
Cell Type	Granulocytes, Macrophages, Monocytes
Biology Area	Immunology, Innate Immunity
Antigen References	Fleming TJ, <i>et al.</i> 1993. <i>J. Immunol.</i> 151:2399.
Gene ID	546644

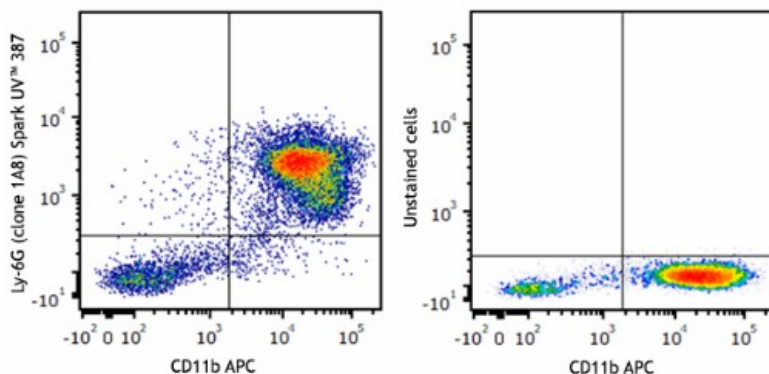
Related Protocols

[Cell Surface Flow Cytometry Staining Protocol](#)

Other Formats

Alexa Fluor® 594 anti-mouse Ly-6G, Purified anti-mouse Ly-6G, Biotin anti-mouse Ly-6G, FITC anti-mouse Ly-6G, PE anti-mouse Ly-6G, Alexa Fluor® 647 anti-mouse Ly-6G, Pacific Blue™ anti-mouse Ly-6G, APC anti-mouse Ly-6G, PerCP/Cyanine5.5 anti-mouse Ly-6G, PE/Cyanine7 anti-mouse Ly-6G, Alexa Fluor® 700 anti-mouse Ly-6G, APC/Cyanine7 anti-mouse Ly-6G, Alexa Fluor® 488 anti-mouse Ly-6G, Brilliant Violet 421™ anti-mouse Ly-6G, Brilliant Violet 570™ anti-mouse Ly-6G, Ultra-LEAF™ Purified anti-mouse Ly-6G, Brilliant Violet 510™ anti-mouse Ly-6G, Purified anti-mouse Ly-6G (Maxpar® Ready), Brilliant Violet 650™ anti-mouse Ly-6G, Brilliant Violet 711™ anti-mouse Ly-6G, Brilliant Violet 605™ anti-mouse Ly-6G, Brilliant Violet 785™ anti-mouse Ly-6G, PE/Dazzle™ 594 anti-mouse Ly-6G, APC/Fire™ 750 anti-mouse Ly-6G, PerCP anti-mouse Ly-6G, TotalSeq™-A0015 anti-mouse Ly-6G, TotalSeq™-C0015 anti-mouse Ly-6G, TotalSeq™-B0015 anti-mouse Ly-6G, Spark Blue™ 550 anti-mouse Ly-6G, Spark NIR™ 685 anti-mouse Ly-6G, Spark YG™ 593 anti-mouse Ly-6G, APC/Fire™ 810 anti-mouse Ly-6G Antibody, PE/Cyanine5 anti-mouse Ly-6G, PE/Fire™ 810 anti-mouse Ly-6G Antibody, Spark UV™ 387 anti-mouse Ly-6G, PE/Fire™ 640 anti-mouse Ly-6G

Product Data



C57BL/6 mouse bone marrow cells were stained with anti-mouse CD11b APC and anti-mouse Ly-6G (clone 1A8) Spark UV™ 387 (left) or with anti-mouse CD11b APC only (right). Data shown were gated on the myeloid population.

For research use only. Not for diagnostic use. Not for resale. BioLegend will not be held responsible for patent infringement or other violations that may occur with the use of our products.

*These products may be covered by one or more Limited Use Label Licenses (see the BioLegend Catalog or our website, www.biolegend.com/ordering#license). BioLegend products may not be transferred to third parties, resold, modified for resale, or used to manufacture commercial products, reverse engineer functionally similar materials, or to provide a service to third parties without written approval of BioLegend. By use of these products you accept the terms and conditions of all applicable Limited Use Label Licenses. Unless otherwise indicated, these products are for research use only and are not intended for human or animal diagnostic, therapeutic or commercial use.

BioLegend Inc., 8999 BioLegend Way, San Diego, CA 92121 www.biolegend.com
Toll-Free Phone: 1-877-Bio-Legend (246-5343) Phone: (858) 768-5800 Fax: (877) 455-9587