

Spark YG™ 570 anti-mouse F4/80 Antibody

Catalog# / Size	123159 / 25 µg 123160 / 100 µg
Clone	BM8
Regulatory Status	RUO
Other Names	EMR1, Ly71
Isotype	Rat IgG2a, κ
Description	F4/80 is a 160 kD glycoprotein. It is characterized as a member of the epidermal growth factor (EGF)-transmembrane 7 (TM7) family. F4/80, also known as EMR1 or Ly71, has been widely used as a murine macrophage marker, which is expressed on the majority of tissue macrophages including peritoneal macrophages, macrophages in lung, gut, thymus and red pulp of spleen (but not on the macrophages located in T cell areas of the spleen, lymph node and Peyer's patch), Kuffer cells, Langerhans cells, and bone marrow stromal cells. F4/80 has also been shown on a subset of dendritic cells. The biological ligand of F4/80 has not been identified, but it has been reported that F4/80 is required for induction of CD8 ⁺ T cells-mediated peripheral tolerance.

Product Details

Verified Reactivity	Mouse
Antibody Type	Monoclonal
Host Species	Rat
Immunogen	Murine macrophages
Formulation	Phosphate-buffered solution, pH 7.2, containing 0.09% sodium azide
Preparation	The antibody was purified by affinity chromatography and conjugated with Spark YG™ 570 under optimal conditions.
Concentration	0.5 mg/mL
Storage & Handling	The antibody solution should be stored undiluted between 2°C and 8°C, and protected from prolonged exposure to light. Do not freeze.
Application	IHC-F - Quality tested
Recommended Usage	Each lot of this antibody is quality control tested by immunohistochemical staining on frozen tissue sections. For immunohistochemistry, a concentration range of 5 - 10 µg/mL is suggested. It is recommended that the reagent be titrated for optimal performance for each application. * Spark YG™ 570 has a maximum excitation of 555 nm and a maximum emission of 570 nm.
Excitation Laser	Green Laser (532 nm)/Yellow-Green Laser (561 nm)
Application Notes	Additional reported applications (for the relevant formats) include: immunohistochemical staining of acetone-fixed frozen sections ^{1,2} and formalin-fixed paraffin-embedded sections ^{6,7} , Western blotting, and spatial biology (IBEX) ^{12,13} .
Application References	<ol style="list-style-type: none"> Schaller E, <i>et al.</i> 2002. <i>Mol. Cell. Biol.</i> 22:8035. (IHC) Stevceva L, <i>et al.</i> 2001. <i>BMC Clin Pathol.</i> 1:3. (IHC) Kobayashi M, <i>et al.</i> 2008. <i>J. Leukoc. Biol.</i> 83:1354. PubMed PoECKel D, <i>et al.</i> 2009. <i>J. Biol Chem.</i> 284:21077. PubMed Glass AM, <i>et al.</i> 2013. <i>J. Immunol.</i> 190:4830. PubMed Koehm S, <i>et al.</i> 2007. <i>J. Allergy Clin. Immunol.</i> 120:570. (IHC) Rankin AL, <i>et al.</i> 2010. <i>J. Immunol.</i> 184:1526. (IHC) Sasi SP, <i>et al.</i> 2014. <i>J Biol Chem.</i> 289:14178. PubMed Thakus VS, <i>et al.</i> 2014. <i>Toxicol Lett.</i> 230:322. PubMed Watson NB, <i>et al.</i> 2015. <i>J Immunol.</i> 194:2796. PubMed
(PubMed link indicates BioLegend citation)	

11. Hirakawa H, *et al.* 2015. *PLoS One*. 10:119360. [PubMed](#)
12. Radtke AJ, *et al.* 2020. *Proc Natl Acad Sci U S A*. 117:33455-65. (SB) [PubMed](#)
13. Radtke AJ, *et al.* 2022. *Nat Protoc*. 17:378-401. (SB) [PubMed](#)

RRID AB_2832438 (BioLegend Cat. No. 123159)
AB_2860648 (BioLegend Cat. No. 123160)

Antigen Details

Structure	EGF-TM7 family member, 160 kD glycoprotein
Distribution	Majority of tissue macrophages including peritoneal macrophages, macrophages in lung, gut, thymus and red pulp of spleen, Kuffer cells, Langerhans cells, bone marrow stromal cells, and a subset of dendritic cells
Function	Induction of immunological tolerance
Cell Type	Dendritic cells, Langerhans cells, Macrophages, Tregs
Biology Area	Cell Biology, Immunology, Innate Immunity, Neuroinflammation, Neuroscience
Antigen References	<ol style="list-style-type: none">1. Austy JM and Gordon S. 1981. <i>Eur. J. Immunol.</i> 11:805.2. Hume DA, <i>et al.</i> 1983. <i>J. Exp. Med.</i> 158:1522.3. Ruedl C, <i>et al.</i> 1996. <i>Eur. J. Immunol.</i> 26:1801.4. McKnight AJ, <i>et al.</i> 1996. <i>J. Biol. Chem.</i> 271:486.5. Lin HH, <i>et al.</i> 2005. <i>J. Exp. Med.</i> 201:1615.
Gene ID	13733

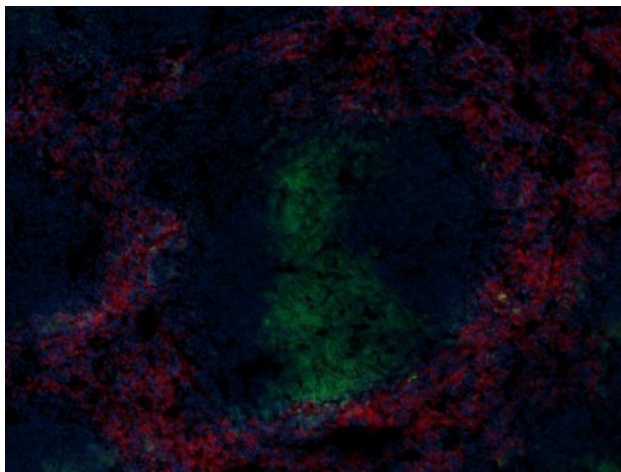
Related Protocols

[Immunohistochemistry Protocol for Frozen Sections](#)

Other Formats

Brilliant Violet 605™ anti-mouse F4/80, Purified anti-mouse F4/80, Biotin anti-mouse F4/80, FITC anti-mouse F4/80, PE anti-mouse F4/80, PE/Cyanine5 anti-mouse F4/80, PE/Cyanine7 anti-mouse F4/80, APC anti-mouse F4/80, APC/Cyanine7 anti-mouse F4/80, Alexa Fluor® 488 anti-mouse F4/80, Alexa Fluor® 647 anti-mouse F4/80, Pacific Blue™ anti-mouse F4/80, PerCP anti-mouse F4/80, PerCP/Cyanine5.5 anti-mouse F4/80, Alexa Fluor® 700 anti-mouse F4/80, Brilliant Violet 421™ anti-mouse F4/80, Brilliant Violet 510™ anti-mouse F4/80, Alexa Fluor® 594 anti-mouse F4/80, Brilliant Violet 785™ anti-mouse F4/80, Purified anti-mouse F4/80 (Maxpar® Ready), PE/Dazzle™ 594 anti-mouse F4/80, Brilliant Violet 650™ anti-mouse F4/80, Brilliant Violet 711™ anti-mouse F4/80, APC/Fire™ 750 anti-mouse F4/80, TotalSeq™-A0114 anti-mouse F4/80, TotalSeq™-B0114 anti-mouse F4/80, TotalSeq™-C0114 anti-mouse F4/80, Spark YG™ 570 anti-mouse F4/80, KIRAVIA Blue 520™ anti-mouse F4/80, Ultra-LEAF™ Purified anti-mouse F4/80, APC/Fire™ 810 anti-mouse F4/80, Spark NIR™ 685 anti-mouse F4/80

Product Data



C57BL/6 mouse frozen spleen section was fixed with 4% paraformaldehyde (PFA) for 10 minutes at room temperature and blocked with 5% FBS for 1 hour at room temperature. Then the section was stained with 5 µg/mL of F4/80 (clone BM8) Spark YG™ 570 (red) and 5 µg/mL of CD3 (clone 17A2) Alexa Fluor® 647 (green) overnight at 4°C. Nuclei were counterstained with DAPI (blue). The image was captured with a 10X objective.

For research use only. Not for diagnostic use. Not for resale. BioLegend will not be held responsible for patent infringement or other violations that may occur with the use of our products.

*These products may be covered by one or more Limited Use Label Licenses (see the BioLegend Catalog or our website, www.biolegend.com/ordering#license). BioLegend products may not be transferred to third parties, resold, modified for resale, or used to manufacture commercial products, reverse engineer functionally similar materials, or to provide a service to third parties without written approval of BioLegend. By use of these products you accept the terms and conditions of all applicable Limited Use Label Licenses. Unless otherwise indicated, these products are for research use only and are not intended for human or animal diagnostic, therapeutic or commercial use.

BioLegend Inc., 8999 BioLegend Way, San Diego, CA 92121 www.biolegend.com
Toll-Free Phone: 1-877-Bio-Legend (246-5343) Phone: (858) 768-5800 Fax: (877) 455-9587