

Ultra-LEAF™ Purified anti-human CD14 Antibody

Catalog# / Size	301861 / 100 µg 301862 / 1 mg
Clone	M5E2
Regulatory Status	RUO
Workshop	III 329
Other Names	LPS receptor
Isotype	Mouse IgG2a, κ
Description	CD14 is a 53-55 kD glycosylphosphatidylinositol (GPI)-linked membrane glycoprotein also known as LPS receptor. CD14 is expressed at high levels on monocytes and macrophages, and at lower levels on granulocytes. Some dendritic cell populations such as interfollicular dendritic cells, reticular dendritic cells, and Langerhans cells have also been reported to express CD14. As a high-affinity receptor for LPS, CD14 is involved in the clearance of gram-negative pathogens, and in the upregulation of adhesion molecules and expression of cytokines in monocytes and neutrophils.

Product Details

Verified Reactivity	Human, Cynomolgus, Rhesus
Reported Reactivity	African Green, Capuchin Monkey, Cow, Chimpanzee, Common Marmoset, Cotton-topped Tamarin, Dog, Pigtailed Macaque, Squirrel Monkey
Antibody Type	Monoclonal
Host Species	Mouse
Immunogen	Full-length human CD14 protein
Formulation	0.2 µm filtered in phosphate-buffered solution, pH 7.2, containing no preservative. Endotoxin level is <0.01 EU/µg of the protein (<0.001 ng/µg of the protein) as determined by the LAL test.
Preparation	The Ultra-LEAF™ (Low Endotoxin, Azide-Free) antibody was purified by affinity chromatography.
Concentration	The antibody is bottled at the concentration indicated on the vial, typically between 2 mg/mL and 3 mg/mL. Older lots may have also been bottled at 1 mg/mL. To obtain lot-specific concentration, please enter the lot number in our Concentration and Expiration Lookup or Certificate of Analysis online tools.
Storage & Handling	The antibody solution should be stored undiluted between 2°C and 8°C. This Ultra-LEAF™ solution contains no preservative; handle under aseptic conditions.
Application	FC - Quality tested CyTOF® - Verified
Recommended Usage	Each lot of this antibody is quality control tested by immunofluorescent staining with flow cytometric analysis . For flow cytometric staining, the suggested use of this reagent is ≤ 2.0 µg per million cells in 100 µl volume or 100 µl of whole blood. It is recommended that the reagent be titrated for optimal performance for each application.
Application Notes	The M5E2 antibody inhibits monocyte activation and cytokine production induced by LPS. Additional reported applications (for the relevant formats) include: immunohistochemical staining of acetone-fixed frozen sections, blocking of LPS stimulation ⁴ , and immunofluorescence microscopy ⁵ . Clone M5E2 is not recommended for immunohistochemical staining of formalin-fixed paraffin-embedded sections. The Ultra-LEAF™ purified antibody (Endotoxin < 0.01 EU/µg, Azide-Free, 0.2 µm filtered) is recommended for functional assays (Cat. No. 301861 and 301862).
Application References	1. McMichael A, <i>et al.</i> 1987. Leucocyte Typing III. Oxford University Press. New York. 2. Knapp W, <i>et al.</i> Eds. 1989. Leucocyte Typing IV. Oxford University Press. New York. (IHC-F) 3. Schlossman S, <i>et al.</i> Eds. 1995. Leucocyte Typing V. Oxford University Press. New York.
(PubMed link indicates BioLegend citation)	

4. Power CP, *et al.* 2004. *J. Immunol.* 173:5229. (Block)
5. Williams KC, *et al.* 2001. *J. Exp. Med.* 193:905.
6. Iwamoto S, *et al.* 2007. *J. Immunol.* 179:1449. (FC) [PubMed](#)
7. Santer DM, *et al.* 2010. *J. Immunol.* 485:4739. [PubMed](#)
8. Yoshino N, *et al.* 2000. *Exp. Anim. (Tokyo)* 49:97. (FC)
9. Zizzo G, *et al.* 2012. *J. Immunol.* 189:3508. [PubMed](#)
10. Stoeckius M, *et al.* 2017. *Nat. Methods.* 14:865. (PG)
11. Peterson VM, *et al.* 2017. *Nat. Biotechnol.* 35:936. (PG)

Product Citations

1. Thrash EM, *et al.* 2020. *STAR Protoc.* 1:100055. [PubMed](#)

RRID

AB_2814124 (BioLegend Cat. No. 301861)
 AB_2814125 (BioLegend Cat. No. 301862)

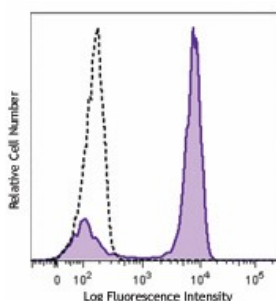
Antigen Details

Structure	GPI-linked membrane glycoprotein, 53-55 kD
Distribution	Monocytes, macrophages, granulocytes (low)
Function	LPS receptor, clearance of Gram-negative pathogens
Ligand/Receptor	LPS
Cell Type	Granulocytes, Macrophages, Monocytes, Neutrophils
Biology Area	Cell Biology, Immunology, Innate Immunity, Neuroinflammation, Neuroscience
Molecular Family	CD Molecules
Antigen References	<ol style="list-style-type: none"> 1. Stocks S, <i>et al.</i> 1990. <i>Biochem. J.</i> 268:275. 2. Wright S, <i>et al.</i> 1990. <i>Science</i> 249:1434.
Gene ID	929

Other Formats

APC anti-human CD14, FITC anti-human CD14, PE anti-human CD14, Purified anti-human CD14, PE/Cyanine7 anti-human CD14, Alexa Fluor® 488 anti-human CD14, Alexa Fluor® 647 anti-human CD14, Ultra-LEAF™ Purified anti-human CD14, Pacific Blue™ anti-human CD14, APC/Cyanine7 anti-human CD14, Alexa Fluor® 700 anti-human CD14, PerCP/Cyanine5.5 anti-human CD14, Biotin anti-human CD14, Brilliant Violet 421™ anti-human CD14, Brilliant Violet 570™ anti-human CD14, Brilliant Violet 605™ anti-human CD14, Brilliant Violet 650™ anti-human CD14, Brilliant Violet 711™ anti-human CD14, Brilliant Violet 785™ anti-human CD14, Brilliant Violet 510™ anti-human CD14, Purified anti-human CD14 (Maxpar® Ready), PerCP anti-human CD14, PE/Dazzle™ 594 anti-human CD14, APC/Fire™ 750 anti-human CD14, TotalSeq™-A0081 anti-human CD14, TotalSeq™-B0081 anti-human CD14, TotalSeq™-C0081 anti-human CD14, PE/Cyanine5 anti-human CD14, TotalSeq™-D0081 anti-human CD14, GMP FITC anti-human CD14, GMP APC anti-human CD14, GMP PE anti-human CD14, GMP Pacific Blue™ anti-human CD14

Product Data



Human peripheral blood monocytes were stained with Ultra-LEAF™ purified CD14 (clone M5E2, filled histogram) or mouse IgG2a, κ isotype control (open histogram), followed by anti-mouse IgG FITC.

For research use only. Not for diagnostic use. Not for resale. BioLegend will not be held responsible for patent infringement or other violations that may occur with the use of our products.

*These products may be covered by one or more Limited Use Label Licenses (see the BioLegend Catalog or our website, www.biolegend.com/ordering#license).

BioLegend products may not be transferred to third parties, resold, modified for resale, or used to manufacture commercial products, reverse engineer functionally similar materials, or to provide a service to third parties without written approval of BioLegend. By use of these products you accept the terms and conditions of all applicable Limited Use Label Licenses. Unless otherwise indicated, these products are for research use only and are not intended for human or animal diagnostic, therapeutic or commercial use.

BioLegend Inc., 8999 BioLegend Way, San Diego, CA 92121 www.biolegend.com
Toll-Free Phone: 1-877-Bio-Legend (246-5343) Phone: (858) 768-5800 Fax: (877) 455-9587