

Alexa Fluor® 647 anti-human CX3CR1 Antibody

Catalog# / Size	341607 / 25 tests 341608 / 100 tests
Clone	2A9-1
Regulatory Status	RUO
Other Names	V28, GPR13, Chemokine C-X3-C receptor 1
Isotype	Rat IgG2b, κ
Description	CX3CR1 is a G-protein-coupled seven-transmembrane chemokine receptor, also called GPR13 or V28. It is expressed on NK cells, T cell subset, monocytes/macrophages, dendritic cells, and some malignant epithelial cells. CX3CL1 (known also as fractalkine and neurotactin) is the ligand of CX3CR1. CX3CL1 is a unique transmembrane molecule with a CX3C-motif chemokine domain and a mucin-like stalk. CX3CL1 is expressed by activated-endothelial cells, neurons, and astrocytes. The interaction of CX3CR1 and its ligand mediates firm cell adhesion and migration.

Product Details

Verified Reactivity	Human
Reported Reactivity	African Green, Cynomolgus, Rhesus
Antibody Type	Monoclonal
Host Species	Rat
Immunogen	CX3CR1-EGFP fusion protein
Formulation	Phosphate-buffered solution, pH 7.2, containing 0.09% sodium azide and BSA (origin USA)
Preparation	The antibody was purified by affinity chromatography and conjugated with Alexa Fluor® 647 under optimal conditions.
Concentration	Lot-specific (to obtain lot-specific concentration, please enter the lot number in our Concentration and Expiration Lookup or Certificate of Analysis online tools.)
Storage & Handling	The antibody solution should be stored undiluted between 2°C and 8°C, and protected from prolonged exposure to light. Do not freeze.
Application	FC - Quality tested
Recommended Usage	Each lot of this antibody is quality control tested by immunofluorescent staining with flow cytometric analysis . For flow cytometric staining, the suggested use of this reagent is 5 µl per million cells in 100 µl staining volume or 5 µl per 100 µl of whole blood. * Alexa Fluor® 647 has a maximum emission of 668 nm when it is excited at 633nm / 635nm. Alexa Fluor® and Pacific Blue™ are trademarks of Life Technologies Corporation. View full statement regarding label licenses
Excitation Laser	Red Laser (633 nm)
Application References	1. Nishimura M, <i>et al.</i> 2002. <i>J. Immunol.</i> 168:6173. 2. Nanki T, <i>et al.</i> 2002. <i>Arthritis Rheum.</i> 46:2878. 3. Kobayashi T, <i>et al.</i> 2007. <i>Inflamm. Bowel Dis.</i> 13:837. 4. Beziat V, <i>et al.</i> 2011. <i>J. Immunol.</i> 186:6753. PubMed .
(PubMed link indicates BioLegend citation)	
Product Citations	1. Mandl M, <i>et al.</i> 2014. <i>PLoS One.</i> 9:112140. PubMed 2. Appleby L, <i>et al.</i> 2013. <i>Immunol Lett.</i> 152:32. PubMed 3. Nasiri B, <i>et al.</i> 2022. <i>Adv Healthc Mater.</i> 11:e2200890. PubMed

RRID AB_1626274 (BioLegend Cat. No. 341607)
AB_2087426 (BioLegend Cat. No. 341608)

Antigen Details

Structure	G-protein-coupled seven transmembrane receptor
Distribution	NK cells, T cell subset, monocytes/macrophages, dendritic cells
Function	cell adhesion and migration
Ligand/Receptor	CX3CL1 (Fractalkine, FKN, neurotactin)
Cell Type	Dendritic cells, Macrophages, Monocytes, NK cells, T cells
Biology Area	Cell Biology, Immunology, Neuroinflammation, Neuroscience, Neuroscience Cell Markers
Molecular Family	Cytokine/Chemokine Receptors, GPCR
Antigen References	1. Imai T, <i>et al.</i> 1997. <i>Cell</i> . 91:521. 2. Fong AM, <i>et al.</i> 1998. <i>J. Exp. Med.</i> 188:1413. 3. Auffray C, <i>et al.</i> 2009. <i>J. Exp. Med.</i> 206:595.
Gene ID	1524

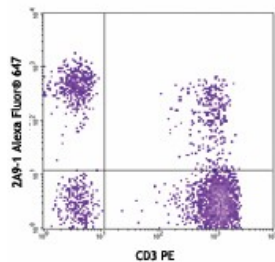
Related Protocols

[Cell Surface Flow Cytometry Staining Protocol](#)

Other Formats

PE/Cyanine7 anti-human CX3CR1, Purified anti-human CX3CR1, PE anti-human CX3CR1, FITC anti-human CX3CR1, Alexa Fluor® 647 anti-human CX3CR1, APC anti-human CX3CR1, PerCP/Cyanine5.5 anti-human CX3CR1, APC/Cyanine7 anti-human CX3CR1, Biotin anti-human CX3CR1, Brilliant Violet 510™ anti-human CX3CR1, Brilliant Violet 421™ anti-human CX3CR1, PE/Dazzle™ 594 anti-human CX3CR1, Brilliant Violet 650™ anti-human CX3CR1, Brilliant Violet 785™ anti-human CX3CR1, Brilliant Violet 711™ anti-human CX3CR1, APC/Fire™ 750 anti-human CX3CR1

Product Data



Human peripheral blood lymphocytes stained with 2A9-1 Alexa Fluor® 647 and CD3 (OKT3) PE

For research use only. Not for diagnostic use. Not for resale. BioLegend will not be held responsible for patent infringement or other violations that may occur with the use of our products.

*These products may be covered by one or more Limited Use Label Licenses (see the BioLegend Catalog or our website, www.biolegend.com/ordering#license). BioLegend products may not be transferred to third parties, resold, modified for resale, or used to manufacture commercial products, reverse engineer functionally similar materials, or to provide a service to third parties without written approval of BioLegend. By use of these products you accept the terms and conditions of all applicable Limited Use Label Licenses. Unless otherwise indicated, these products are for research use only and are not intended for human or animal diagnostic, therapeutic or commercial use.

BioLegend Inc., 8999 BioLegend Way, San Diego, CA 92121 www.biolegend.com
Toll-Free Phone: 1-877-Bio-Legend (246-5343) Phone: (858) 768-5800 Fax: (877) 455-9587

