

Alexa Fluor® 647 anti-mouse CD3 Antibody

Catalog# / Size	100209 / 100 µg
Clone	17A2
Regulatory Status	RUO
Other Names	T cell antigen receptor complex, T3
Isotype	Rat IgG2b, κ
Description	CD3, also known as T3, is a member of the Ig superfamily and primarily expressed on T cells, NK-T cells, and at different levels on thymocytes during T cell differentiation. CD3 is composed of CD3ε, δ, γ and ζ chains. It forms a TCR complex by associating with TCR α/β or γ/δ chains. CD3 plays a critical role in TCR signal transduction, T cell activation, and antigen recognition by binding the peptide/MHC antigen complex

Product Details

Verified Reactivity	Mouse
Antibody Type	Monoclonal
Host Species	Rat
Immunogen	γδTCR-positive T-T hybridoma D1
Formulation	Phosphate-buffered solution, pH 7.2, containing 0.09% sodium azide.
Preparation	The antibody was purified by affinity chromatography and conjugated with Alexa Fluor® 647 under optimal conditions.
Concentration	0.5 mg/mL
Storage & Handling	The antibody solution should be stored undiluted between 2°C and 8°C, and protected from prolonged exposure to light. Do not freeze.
Application	FC - Quality tested IHC-F, 3D IHC - Verified
Recommended Usage	<p>Each lot of this antibody is quality control tested by immunofluorescent staining with flow cytometric analysis. For flow cytometric staining, the suggested use of this reagent is ≤ 0.25 µg per million cells in 100 µL volume. For immunohistochemistry on frozen tissue sections, a concentration range of 2.5 - 5.0 µg/mL is suggested. For 3D immunohistochemistry on formalin-fixed tissues, a concentration of 5.0 µg/mL is suggested. It is recommended that the reagent be titrated for optimal performance for each application.</p> <p>* Alexa Fluor® 647 has a maximum emission of 668 nm when it is excited at 633 nm / 635 nm.</p> <p>Alexa Fluor® and Pacific Blue™ are trademarks of Life Technologies Corporation.</p> <p>View full statement regarding label licenses</p>
Excitation Laser	Red Laser (633 nm)
Application Notes	Additional reported application (for relevant formats) include: spatial biology (IBEX) ^{1,2} .
Application References (PubMed link indicates BioLegend citation)	<ol style="list-style-type: none">1. Radtke AJ, <i>et al.</i> 2020. <i>Proc Natl Acad Sci U S A.</i> 117:33455-65. (SB) PubMed2. Radtke AJ, <i>et al.</i> 2022. <i>Nat Protoc.</i> 17:378-401. (SB) PubMed
Product Citations	<ol style="list-style-type: none">1. Sun L, <i>et al.</i> 2021. <i>Cancer Cell.</i> :. PubMed2. Hiraoka N, <i>et al.</i> 2011. <i>Gastroenterology.</i> 140:310. PubMed3. Lin YN, <i>et al.</i> 2022. <i>Oncoimmunology.</i> 11:2027136. PubMed4. Otano I, <i>et al.</i> 2021. <i>Nat Commun.</i> 12:7296. PubMed

5. Baptista AP *et al.* 2019. *Immunity*. 50(5):1188-1201 . [PubMed](#)
6. Roufaiel M, *et al.* 2016. *Nat Immunol*. 10.1038/ni.3564. [PubMed](#)
7. Webster HC, *et al.* 2020. *J Immunol Methods*. 112702:477. [PubMed](#)
8. Rodriguez AB, *et al.* 2021. *Cell Reports*. 36(3):109422. [PubMed](#)
9. Etxeberria I, *et al.* 2020. *Cancer Cell*. 36(6):613-629. [PubMed](#)
10. Guldner IH, *et al.* 2020. *Cell*. 183(5):1234-1248.e25. [PubMed](#)
11. Zeng Z, *et al.* 2022. *Oncogene*. :. [PubMed](#)
12. Rassy D, *et al.* 2020. *J Neuropathol Exp Neurol*. 226:79. [PubMed](#)
13. Xiong S 2013. *J Immunol*. 190:3267. [PubMed](#)
14. Sluis T, *et al.* 2015. *Clin Cancer Res*. 21:781. [PubMed](#)
15. Luck H, *et al.* 2019. *Nat Commun*. 10:3650. [PubMed](#)
16. Robertson TF, *et al.* 2021. *J Cell Biol*. 220:. [PubMed](#)
17. Cecchinato V, *et al.* 2017. *J Immunol*. 198(1):184-195. [PubMed](#)
18. Chakraborty M, *et al.* 2021. *Cell Reports*. 34(2):108609. [PubMed](#)
19. Zhang H, *et al.* 2021. *Cell Reports*. 35(6):109096. [PubMed](#)
20. Ovadya Y, *et al.* 2018. *Nat Commun*. 9:5435. [PubMed](#)
21. Ardehali R, *et al.* 2013. *Proc Natl Acad Sci U S A*. 110:3405. [PubMed](#)
22. Agudo J *et al.* 2018. *Immunity*. 48(2):271-285 . [PubMed](#)
23. Chen S, *et al.* 2015. *Blood*. 126: 103 - 112. [PubMed](#)
24. Crinier A, *et al.* 2018. *Immunity*. 49:971. [PubMed](#)
25. Bárcena C *et al.* 2019. *EBioMedicine*. 43:513-524 . [PubMed](#)
26. Smith KJ, *et al.* 2022. *PLoS Biol*. 20:e3001554. [PubMed](#)
27. Shi H *et al.* 2018. *Immunity*. 49(5):899-914 . [PubMed](#)
28. Chang H, *et al.* 2016. *J Immunol*. 197: 2473 - 2484. [PubMed](#)
29. Lerbs T, *et al.* 2020. *JCI Insight*. 5:00. [PubMed](#)
30. O'Reilly LA, *et al.* 2018. *Immunity*. 48:570. [PubMed](#)

RRID AB_389323 (BioLegend Cat. No. 100209)

Antigen Details

Structure	Ig superfamily, CD3/TCR, 20 kD
Distribution	Thymocytes (differentiation dependent), mature T cells, NK-T cells
Function	Antigen recognition, TCR signal transduction, T cell activation
Ligand/Receptor	Peptide antigen/MHC-complex
Antigen References	<ol style="list-style-type: none"> 1. Barclay A, <i>et al.</i> 1997. <i>The Leukocyte Antigen FactsBook</i> Academic Press. 2. Davis MM. 1990. <i>Annu. Rev. Biochem.</i> 59:475. 3. Weiss A, <i>et al.</i> 1994. <i>Cell</i> 76:263.
Gene ID	12502

Related Protocols

[Cell Surface Flow Cytometry Staining Protocol](#)

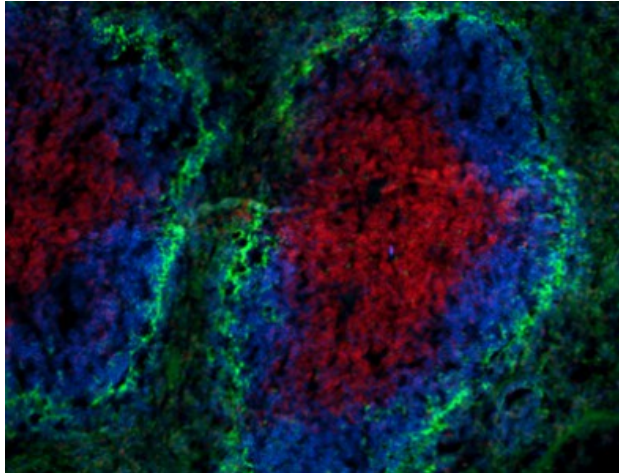
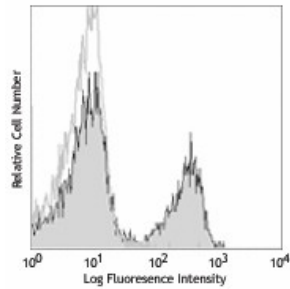
[Ce3D™ Tissue Clearing Kit](#)

Other Formats

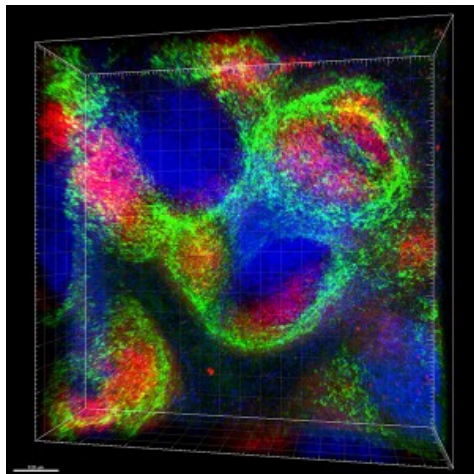
FITC anti-mouse CD3, PE anti-mouse CD3, Purified anti-mouse CD3, Alexa Fluor® 647 anti-mouse CD3, Alexa Fluor® 488 anti-mouse CD3, Pacific Blue™ anti-mouse CD3, Alexa Fluor® 700 anti-mouse CD3, PerCP/Cyanine5.5 anti-mouse CD3, PE/Cyanine7 anti-mouse CD3, APC/Cyanine7 anti-mouse CD3, Brilliant Violet 421™ anti-mouse CD3, Brilliant Violet 570™ anti-mouse CD3, Brilliant Violet 650™ anti-mouse CD3, Brilliant Violet 785™ anti-mouse CD3, Brilliant Violet 510™ anti-mouse CD3, APC anti-mouse CD3, Ultra-LEAF™ Purified anti-mouse CD3, Brilliant Violet 605™ anti-mouse CD3, Alexa Fluor® 594 anti-mouse CD3, Brilliant Violet 711™ anti-mouse CD3, Biotin anti-mouse CD3, PE/Dazzle™ 594 anti-mouse CD3, APC/Fire™ 750 anti-mouse CD3, Brilliant Violet 750™ anti-mouse CD3, TotalSeq™-A0182 anti-mouse CD3, TotalSeq™-B0182 anti-mouse CD3, Spark Blue™ 550 anti-mouse CD3, Spark NIR™ 685 anti-mouse CD3, TotalSeq™-C0182 anti-mouse CD3, APC/Fire™ 810 anti-mouse CD3, PE/Fire™ 640 anti-mouse CD3, Spark YG™ 570 anti-mouse CD3, PE/Fire™ 700 anti-mouse CD3, PE/Cyanine5 anti-mouse CD3, Spark Blue™ 574 anti-mouse CD3 Antibody, Spark Violet™ 423 anti-mouse CD3, PE/Fire™ 810 anti-mouse CD3, Spark Red™ 718 anti-mouse CD3

Product Data

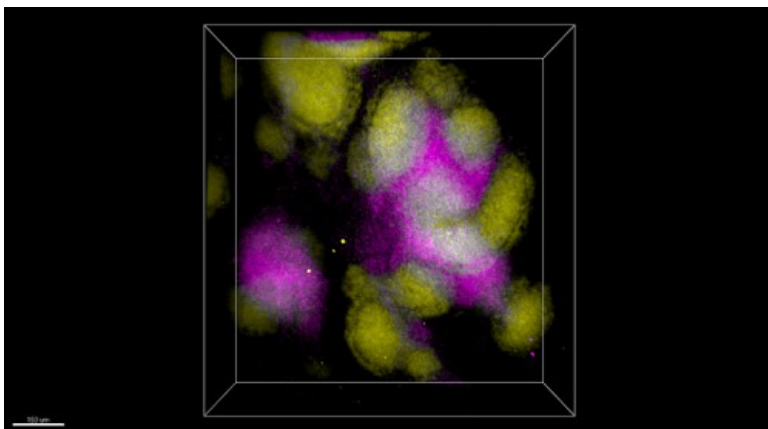
C57BL/6 mouse splenocytes stained with 17A2 Alexa Fluor® 647



Dissected C57/B6 mouse spleen was immersed in 4% paraformaldehyde (PFA) overnight followed by 30% sucrose immersion overnight and frozen in OCT. Frozen section was blocked with 5% FBS and 5% mouse serum for 30 minutes at room temperature. Then the tissue section was stained with 5 µg/mL of anti-mouse CD3 (clone 17A2) Alexa Fluor® 647 (red) and 5 µg/mL of anti-mouse B220 (clone RA3-6B2) Alexa Fluor® 594 (blue) and 5 µg/mL of anti-mouse CD169 (clone 3D6-112) Alexa Fluor® 488 (green) overnight at 4°C. The image was captured by 10X objective.



Formalin-fixed, 400 micron-thick mouse spleen section was blocked, permeabilized and stained overnight with CD21/35 (CR2/CR1)(clone 7E9) Alexa Fluor® 594 (red), CD169 (Siglec-1) (clone 3D6.112) Alexa Fluor® 488 (green), and CD3 (clone 17A2) Alexa Fluor® 647 (blue) all at 5 µg/mL, optically cleared, then analyzed at 235 µm imaging depth on a confocal microscope. Scale bar: 100 µm. [Watch the video.](#)



Paraformaldehyde-fixed (4%), 500 µm-thick mouse spleen section was processed according to the Ce3DTM Tissue Clearing Kit protocol (cat. no. 427701). The section was costained with anti-mouse CD37 Antibody (clone Duno85) Alexa Fluor® 594 at 5 µg/mL (yellow), and anti-mouse CD3 Antibody (clone 17A2) Alexa Fluor® 647 at 5 µg/mL (magenta). The section was then optically cleared and mounted in a sample chamber. The image was captured with a 10X objective using Zeiss 780 confocal microscope and processed by Imaris image analysis software. [Watch the video.](#)

For research use only. Not for diagnostic use. Not for resale. BioLegend will not be held responsible for patent infringement or other violations that may occur with the use of our products.

*These products may be covered by one or more Limited Use Label Licenses (see the BioLegend Catalog or our website, www.biolegend.com/ordering#license).

BioLegend products may not be transferred to third parties, resold, modified for resale, or used to manufacture commercial products, reverse engineer functionally similar materials, or to provide a service to third parties without written approval of BioLegend. By use of these products you accept the terms and conditions of all applicable Limited Use Label Licenses. Unless otherwise indicated, these products are for research use only and are not intended for human or animal diagnostic, therapeutic or commercial use.

BioLegend Inc., 8999 BioLegend Way, San Diego, CA 92121 www.biolegend.com
Toll-Free Phone: 1-877-Bio-Legend (246-5343) Phone: (858) 768-5800 Fax: (877) 455-9587