

## Alexa Fluor® 660 anti-human CD45 Antibody

<b>Catalog# / Size</b>	304079 / 25 tests 304080 / 100 tests
<b>Clone</b>	HI30
<b>Regulatory Status</b>	RUO
<b>Workshop</b>	IV N816
<b>Other Names</b>	LCA, T200
<b>Isotype</b>	Mouse IgG1, κ
<b>Description</b>	CD45 is a 180-240 kD single chain type I membrane glycoprotein also known as leukocyte common antigen (LCA) and T200. It is a tyrosine phosphatase expressed on the plasma membrane of all hematopoietic cells, except erythrocytes and platelets. CD45 is a signaling molecule that regulates a variety of cellular processes including cell growth, differentiation, cell cycle, and oncogenic transformation. CD45 plays a critical role in T and B cell antigen receptor-mediated activation by dephosphorylating substrates including p56Lck, p59Fyn, and other Src family kinases. CD45 non-covalently associates with lymphocyte phosphatase-associated phosphoprotein (LPAP) on T and B lymphocytes. CD45 has been reported to bind galectin-1 and to be associated with several other cell surface antigens including CD1, CD2, CD3, and CD4.

### Product Details

---

<b>Verified Reactivity</b>	Human
<b>Reported Reactivity</b>	Chimpanzee
<b>Antibody Type</b>	Monoclonal
<b>Host Species</b>	Mouse
<b>Formulation</b>	Phosphate-buffered solution, pH 7.2, containing 0.09% sodium azide and BSA (origin USA)
<b>Preparation</b>	The antibody was purified by affinity chromatography and conjugated with Alexa Fluor® 660 under optimal conditions.
<b>Concentration</b>	Lot-specific (to obtain lot-specific concentration, please enter the lot number in our <a href="#">Concentration and Expiration Lookup</a> or <a href="#">Certificate of Analysis</a> online tools.)
<b>Storage &amp; Handling</b>	The antibody solution should be stored undiluted between 2°C and 8°C, and protected from prolonged exposure to light. <b>Do not freeze.</b>
<b>Application</b>	<a href="#">FC - Quality tested</a>
<b>Recommended Usage</b>	Each lot of this antibody is quality control tested by <a href="#">immunofluorescent staining with flow cytometric analysis</a> . For flow cytometric staining, the suggested use of this reagent is 5 µL per million cells in 100 µL staining volume or 5 µL per 100 µL of whole blood. It is recommended that the reagent be titrated for optimal performance for each application.  * Alexa Fluor® 660 has an excitation maximum of 663 nm, and a maximum emission of 690 nm.  Alexa Fluor® and Pacific Blue™ are trademarks of Life Technologies Corporation.  <a href="#">View full statement regarding label licenses</a>
<b>Excitation Laser</b>	Red Laser (633 nm)
<b>Application Notes</b>	Additional reported applications (for the relevant formats) include: immunohistochemical staining of acetone-fixed frozen tissue sections and formalin-fixed paraffin-embedded tissue sections <sup>9</sup> , inhibition of CD45 functions <sup>4</sup> , immunofluorescence <sup>11</sup> , Western blotting <sup>3</sup> , and spatial biology (IBEX) <sup>16,17</sup> .  It was found that the HI30 clone and the 2D1 clone can cross block each other's binding.

## Application References

(PubMed link indicates BioLegend citation)

1. Knapp W, *et al.* 1989. Leucocyte Typing IV. Oxford University Press. New York.
2. Kishihara K, *et al.* 1993. *Cell* 74:143.
3. Esser M, *et al.* 2001. *J. Virol.* 75:6173. (WB)
4. Yamada T, *et al.* 2002. *J. Biol. Chem.* 277:28830.
5. Nagano M, *et al.* 2007. *Blood* 110:151.
6. Jiang Q, *et al.* 2008. *Blood* 112:2858. [PubMed](#)
7. Morozov A, *et al.* 2010. *Clin Cancer Res.* 16:5630. [PubMed](#)
8. Yoshino N, *et al.* 2000. *Exp. Anim. (Tokyo)* 49:97. (FC)
9. Friedman T, *et al.* 1999. *J. Immunol.* 162:5256. (IHC)
10. Oeztuerk-Winder F, *et al.* 2012. *EMBO J.* 31:3431. (FC) [PubMed](#)
11. Rees LE, *et al.* 2003. *Clin. Exp. Immunol.* 134:497. (IF)
12. Lee J, *et al.* 2015. *J Exp Med.* 212:385. [PubMed](#)
13. Breton G, *et al.* 2015. *J Exp Med.* 212:401. [PubMed](#)
14. Marquardt N, *et al.* 2015. *J Immunol.* 6:2467. [PubMed](#)
15. Bushway ME, *et al.* 2014. *Biol Reprod.* 90(5): 110. (IF) [PubMed](#)
16. Radtke AJ, *et al.* 2020. *Proc Natl Acad Sci USA.* 117:33455-33465. (SB) [PubMed](#)
17. Radtke AJ, *et al.* 2022. *Nat Protoc.* 17:378-401. (SB) [PubMed](#)

RRID AB\_2892354 (BioLegend Cat. No. 304079)  
AB\_2892354 (BioLegend Cat. No. 304080)

## Antigen Details

---

<b>Structure</b>	Tyrosine phosphatases, type I transmembrane protein, 180-240 kD (multiple isoforms)
<b>Distribution</b>	Hematopoietic cells, not expressed in circulating erythrocytes or platelets
<b>Function</b>	TCR and BCR mediated activation
<b>Ligand/Receptor</b>	Galectin-1, CD2, CD3, CD4
<b>Cell Type</b>	Hematopoietic stem and progenitors, Mesenchymal Stem Cells
<b>Biology Area</b>	Cell Biology, Immunology, Inhibitory Molecules, Innate Immunity, Neuroscience, Neuroscience Cell Markers, Stem Cells
<b>Molecular Family</b>	CD Molecules
<b>Antigen References</b>	<ol style="list-style-type: none"><li>1. Thomas M. 1989. <i>Annu. Rev. Immunol.</i> 7:339.</li><li>2. Trowbridge I, <i>et al.</i> 1994. <i>Annu. Rev. Immunol.</i> 12:85.</li></ol>

Gene ID [5788](#)

## Related Protocols

---

[Cell Surface Flow Cytometry Staining Protocol](#)

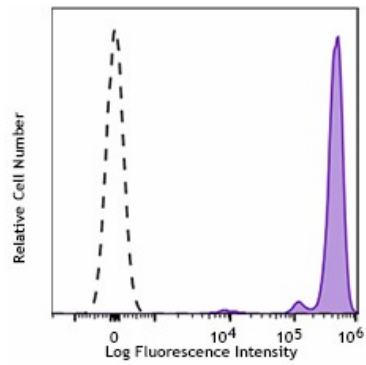
## Other Formats

---

APC anti-human CD45, Biotin anti-human CD45, FITC anti-human CD45, PE anti-human CD45, PE/Cyanine5 anti-human CD45, Purified anti-human CD45, APC/Cyanine7 anti-human CD45, PE/Cyanine7 anti-human CD45, Alexa Fluor® 488 anti-human CD45, Alexa Fluor® 647 anti-human CD45, Pacific Blue™ anti-human CD45, Alexa Fluor® 700 anti-human CD45, PerCP anti-human CD45, PerCP/Cyanine5.5 anti-human CD45, Brilliant Violet 421™ anti-human CD45, Brilliant Violet 570™ anti-human CD45, Brilliant Violet 510™ anti-human CD45, Brilliant Violet 605™ anti-human CD45, Brilliant Violet 650™ anti-human CD45, Purified anti-human CD45 (Maxpar® Ready), Brilliant Violet 785™ anti-human CD45, Brilliant Violet 711™ anti-human CD45, PE/Dazzle™ 594 anti-human CD45, Alexa Fluor® 594 anti-human CD45, APC/Fire™ 750 anti-human CD45, TotalSeq™-A0391 anti-human CD45, TotalSeq™-B0391 anti-human CD45, TotalSeq™-C0391 anti-human CD45, PE/Fire™ 640 anti-human CD45, APC/Fire™ 810 anti-human CD45, Spark YG™ 570 anti-human CD45, PE/Fire™ 700 anti-human CD45, Alexa Fluor® 660 anti-human CD45 Antibody, Spark Violet™ 538 anti-human CD45, Spark YG™ 593 anti-human CD45, GMP APC/Fire™ 750 anti-human CD45, GMP APC anti-human CD45, Spark UV™ 387 anti-human CD45, GMP Pacific Blue™ anti-human CD45, GMP PerCP anti-human CD45, GMP FITC anti-human CD45, GMP PE/Dazzle™ 594 anti-human CD45, GMP PerCP/Cyanine5.5 anti-human CD45

## Product Data

---



Human peripheral blood lymphocytes were stained with CD45 (clone HI30) Alexa Fluor® 660 (filled histogram) or unstained cells (open histogram).

For research use only. Not for diagnostic use. Not for resale. BioLegend will not be held responsible for patent infringement or other violations that may occur with the use of our products.

\*These products may be covered by one or more Limited Use Label Licenses (see the BioLegend Catalog or our website, [www.biolegend.com/ordering#license](http://www.biolegend.com/ordering#license)). BioLegend products may not be transferred to third parties, resold, modified for resale, or used to manufacture commercial products, reverse engineer functionally similar materials, or to provide a service to third parties without written approval of BioLegend. By use of these products you accept the terms and conditions of all applicable Limited Use Label Licenses. Unless otherwise indicated, these products are for research use only and are not intended for human or animal diagnostic, therapeutic or commercial use.

BioLegend Inc., 8999 BioLegend Way, San Diego, CA 92121 [www.biolegend.com](http://www.biolegend.com)  
Toll-Free Phone: 1-877-Bio-Legend (246-5343) Phone: (858) 768-5800 Fax: (877) 455-9587