

## Biotin anti-human CD1c Antibody

<b>Catalog# / Size</b>	331504 / 100 µg
<b>Clone</b>	L161
<b>Regulatory Status</b>	RUO
<b>Workshop</b>	V T-CD01.18
<b>Other Names</b>	R7, M241, BDCA-1
<b>Isotype</b>	Mouse IgG1, κ
<b>Description</b>	CD1c, also known as R7 or M241, is a 43 kD member of the five CD1 antigens (CD1a-e) in humans. The CD1 molecules are type I glycoprotein with structural similarities to MHC class I and are non-covalently associated with β <sub>2</sub> -microglobulin, belonging to the Ig superfamily. CD1c is expressed on cortical thymocytes, Langerhans cells, dendritic cells, and a subset of B cells. It has been reported that CD1c is also expressed on mature T cells in a tightly regulated manner. CD1c is involved in antigen-presentation of glycolipids. It may also act in T cells as an immune regulatory molecule.

### Product Details

---

<b>Verified Reactivity</b>	Human
<b>Reported Reactivity</b>	African Green, Baboon, Cynomolgus, Rhesus
<b>Antibody Type</b>	Monoclonal
<b>Host Species</b>	Mouse
<b>Formulation</b>	Phosphate-buffered solution, pH 7.2, containing 0.09% sodium azide.
<b>Preparation</b>	The antibody was purified by affinity chromatography, and conjugated with biotin under optimal conditions.
<b>Concentration</b>	0.5 mg/ml
<b>Storage &amp; Handling</b>	The antibody solution should be stored undiluted between 2°C and 8°C. <b>Do not freeze.</b>
<b>Application</b>	<a href="#">FC - Quality tested</a>
<b>Recommended Usage</b>	Each lot of this antibody is quality control tested by <a href="#">immunofluorescent staining with flow cytometric analysis</a> . For flow cytometric staining, the suggested use of this reagent is ≤0.25 µg per million cells in 100 µl volume. It is recommended that the reagent be titrated for optimal performance for each application.
<b>Application Notes</b>	Additional reported applications (for the relevant formats) include: immunohistochemical staining on frozen tissue <sup>4,5</sup> , formalin-fixed paraffin-embedded immunohistochemical staining <sup>6</sup> , and spatial biology (IBEX) <sup>7,8</sup> .
<b>Application References</b>	<ol style="list-style-type: none"><li>1. del C Salamone M, <i>et al.</i> 2001. <i>J Leukoc Biol.</i> 70:567.</li><li>2. de Fraissinette A, <i>et al.</i> 1988. <i>Exp Hematol.</i> 16:764.</li><li>3. Li D, <i>et al.</i> 2012. <i>J Exp Med.</i> 209:109. <a href="#">PubMed</a></li><li>4. Xu C, <i>et al.</i> 2010. <i>Am J Hematol.</i> 85:539 (IHC-F)</li><li>5. Gerlini G, <i>et al.</i> 2001. <i>J Invest Dermatol.</i> 117:576 (IHC-F)</li><li>6. Poposki J, <i>et al.</i> 2016. <i>Clin Exp Allergy</i> 45:384 (IHC-P) <a href="#">PubMed</a></li><li>7. Radtke AJ, <i>et al.</i> 2020. <i>Proc Natl Acad Sci USA.</i> 117:33455-33465. (SB) <a href="#">PubMed</a></li><li>8. Radtke AJ, <i>et al.</i> 2022. <i>Nat Protoc.</i> 17:378-401. (SB) <a href="#">PubMed</a></li></ol>
<b>(PubMed link indicates BioLegend citation)</b>	
<b>RRID</b>	AB_1088997 (BioLegend Cat. No. 331504)

### Antigen Details

<b>Structure</b>	43 kD, Ig superfamily, MHC I-like molecule, associates with $\beta$ 2-microglobulin
<b>Distribution</b>	B cell subset, cortical thymocytes, dendritic cells, and Langerhans cells
<b>Function</b>	Presents lipid antigen to CD1c-restricted T cells
<b>Ligand/Receptor</b>	CD1c-restricted TCR
<b>Cell Type</b>	B cells, Dendritic cells, Langerhans cells, Thymocytes
<b>Biology Area</b>	Immunology
<b>Molecular Family</b>	CD Molecules
<b>Antigen References</b>	<ol style="list-style-type: none"> <li>1. Fainboim LM and del C. Salamone. 2002. <i>J. Biol. Reg. Homeos. Ag.</i> 16:125.</li> <li>2. M. del Salamone C, et al. 2001. <i>J. Leukocyte Biol.</i> 70:567.</li> <li>3. Zola H, et al. Eds. 2007. <i>Leukocyte and Stromal Cell Molecules: The CD Markers.</i> P42.</li> </ol>
<b>Gene ID</b>	<a href="#">911</a>

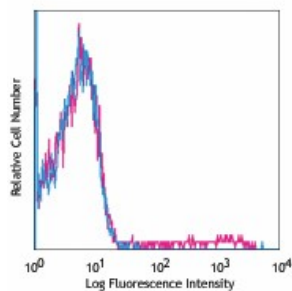
## Related Protocols

[Cell Surface Flow Cytometry Staining Protocol](#)

## Other Formats

PerCP anti-human CD1c, Purified anti-human CD1c, Biotin anti-human CD1c, PE anti-human CD1c, Pacific Blue™ anti-human CD1c, Alexa Fluor® 647 anti-human CD1c, PerCP/Cyanine5.5 anti-human CD1c, Brilliant Violet 421™ anti-human CD1c, PE/Cyanine7 anti-human CD1c, FITC anti-human CD1c, APC/Cyanine7 anti-human CD1c, APC anti-human CD1c, Alexa Fluor® 488 anti-human CD1c, Alexa Fluor® 700 anti-human CD1c, PE/Dazzle™ 594 anti-human CD1c, Brilliant Violet 510™ anti-human CD1c, Brilliant Violet 605™ anti-human CD1c, Brilliant Violet 711™ anti-human CD1c, TotalSeq™-A0160 anti-human CD1c, Brilliant Violet 650™ anti-human CD1c, Brilliant Violet 785™ anti-human CD1c, APC/Fire™ 750 anti-human CD1c, TotalSeq™-C0160 anti-human CD1c, TotalSeq™-B0160 anti-human CD1c, TotalSeq™-D0160 anti-human CD1c, PE/Cyanine5 anti-human CD1c

## Product Data



Human peripheral blood lymphocytes stained with biotinylated L161, followed by Sav-PE

For research use only. Not for diagnostic use. Not for resale. BioLegend will not be held responsible for patent infringement or other violations that may occur with the use of our products.

\*These products may be covered by one or more Limited Use Label Licenses (see the BioLegend Catalog or our website, [www.biolegend.com/ordering#license](http://www.biolegend.com/ordering#license)). BioLegend products may not be transferred to third parties, resold, modified for resale, or used to manufacture commercial products, reverse engineer functionally similar materials, or to provide a service to third parties without written approval of BioLegend. By use of these products you accept the terms and conditions of all applicable Limited Use Label Licenses. Unless otherwise indicated, these products are for research use only and are not intended for human or animal diagnostic, therapeutic or commercial use.

BioLegend Inc., 8999 BioLegend Way, San Diego, CA 92121 [www.biolegend.com](http://www.biolegend.com)  
Toll-Free Phone: 1-877-Bio-Legend (246-5343) Phone: (858) 768-5800 Fax: (877) 455-9587