

## Biotin anti-human CX3CR1 Antibody

<b>Catalog# / Size</b>	341617 / 50 µg
<b>Clone</b>	2A9-1
<b>Regulatory Status</b>	RUO
<b>Other Names</b>	V28, GPR13, Chemokine C-X3-C receptor 1
<b>Isotype</b>	Rat IgG2b, κ
<b>Description</b>	CX3CR1 is a G-protein-coupled seven-transmembrane chemokine receptor, also called GPR13 or V28. It is expressed on NK cells, T cell subset, monocytes/macrophages, dendritic cells, and some malignant epithelial cells. CX3CL1 (known also as fractalkine and neurotactin) is the ligand of CX3CR1. CX3CL1 is a unique transmembrane molecule with a CX3C-motif chemokine domain and a mucin-like stalk. CX3CL1 is expressed by activated-endothelial cells, neurons, and astrocytes. The interaction of CX3CR1 and its ligand mediates firm cell adhesion and migration.

### Product Details

---

<b>Verified Reactivity</b>	Human
<b>Reported Reactivity</b>	African Green, Cynomolgus, Rhesus
<b>Antibody Type</b>	Monoclonal
<b>Host Species</b>	Rat
<b>Immunogen</b>	CX3CR1-EGFP fusion protein
<b>Formulation</b>	Phosphate-buffered solution, pH 7.2, containing 0.09% sodium azide.
<b>Preparation</b>	The antibody was purified by affinity chromatography and conjugated with biotin under optimal conditions.
<b>Concentration</b>	0.5 mg/ml
<b>Storage &amp; Handling</b>	The antibody solution should be stored undiluted between 2°C and 8°C. <b>Do not freeze.</b>
<b>Application</b>	<a href="#">FC - Quality tested</a>
<b>Recommended Usage</b>	Each lot of this antibody is quality control tested by <a href="#">immunofluorescent staining with flow cytometric analysis</a> . For flow cytometric staining, the suggested use of this reagent is ≤0.5 µg per million cells in 100 µl volume. It is recommended that the reagent be titrated for optimal performance for each application.
<b>Application References</b> (PubMed link indicates BioLegend citation)	<ol style="list-style-type: none"><li>1. Nishimura M, <i>et al.</i> 2002. <i>J. Immunol.</i> 168:6173.</li><li>2. Nanki T, <i>et al.</i> 2002. <i>Arthritis Rheum.</i> 46:2878.</li><li>3. Kobayashi T, <i>et al.</i> 2007. <i>Inflamm. Bowel Dis.</i> 13:837.</li><li>4. Beziat V, <i>et al.</i> 2011. <i>J. Immunol.</i> 186:6753. <a href="#">PubMed</a>.</li></ol>
<b>RRID</b>	AB_2616937 (BioLegend Cat. No. 341617)

### Antigen Details

---

<b>Structure</b>	G-protein-coupled seven transmembrane receptor
<b>Distribution</b>	NK cells, T cell subset, monocytes/macrophages, dendritic cells
<b>Function</b>	cell adhesion and migration
<b>Ligand/Receptor</b>	CX3CL1 (Fractalkine, FKN, neurotactin)

<b>Cell Type</b>	Dendritic cells, Macrophages, Monocytes, NK cells, T cells
<b>Biology Area</b>	Cell Biology, Immunology, Neuroinflammation, Neuroscience, Neuroscience Cell Markers
<b>Molecular Family</b>	Cytokine/Chemokine Receptors, GPCR
<b>Antigen References</b>	<ol style="list-style-type: none"> <li>1. Imai T, <i>et al.</i> 1997. <i>Cell</i>. 91:521.</li> <li>2. Fong AM, <i>et al.</i> 1998. <i>J. Exp. Med.</i> 188:1413.</li> <li>3. Auffray C, <i>et al.</i> 2009. <i>J. Exp. Med.</i> 206:595.</li> </ol>
<b>Gene ID</b>	<a href="#">1524</a>

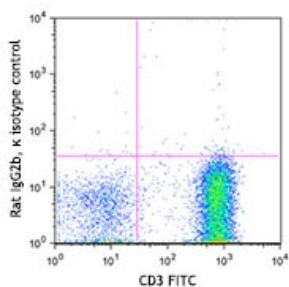
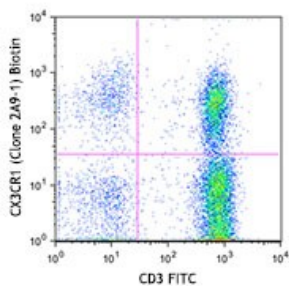
## Related Protocols

[Cell Surface Flow Cytometry Staining Protocol](#)

## Other Formats

PE/Cyanine7 anti-human CX3CR1, Purified anti-human CX3CR1, PE anti-human CX3CR1, FITC anti-human CX3CR1, Alexa Fluor® 647 anti-human CX3CR1, APC anti-human CX3CR1, PerCP/Cyanine5.5 anti-human CX3CR1, APC/Cyanine7 anti-human CX3CR1, Biotin anti-human CX3CR1, Brilliant Violet 510™ anti-human CX3CR1, Brilliant Violet 421™ anti-human CX3CR1, PE/Dazzle™ 594 anti-human CX3CR1, Brilliant Violet 650™ anti-human CX3CR1, Brilliant Violet 785™ anti-human CX3CR1, Brilliant Violet 711™ anti-human CX3CR1, APC/Fire™ 750 anti-human CX3CR1

## Product Data



Human peripheral blood lymphocytes stained with CD3 FITC and biotinylated CX3CR1 (clone 2A9-1) (top) or biotinylated rat IgG2b, κ isotype control (bottom), followed by SAV-PE.

For research use only. Not for diagnostic use. Not for resale. BioLegend will not be held responsible for patent infringement or other violations that may occur with the use of our products.

\*These products may be covered by one or more Limited Use Label Licenses (see the BioLegend Catalog or our website, [www.biolegend.com/ordering#license](http://www.biolegend.com/ordering#license)). BioLegend products may not be transferred to third parties, resold, modified for resale, or used to manufacture commercial products, reverse engineer functionally similar materials, or to provide a service to third parties without written approval of BioLegend. By use of these products you accept the terms and conditions of all applicable Limited Use Label Licenses. Unless otherwise indicated, these products are for research use only and are not intended for human or animal diagnostic, therapeutic or commercial use.

BioLegend Inc., 8999 BioLegend Way, San Diego, CA 92121 [www.biolegend.com](http://www.biolegend.com)  
Toll-Free Phone: 1-877-Bio-Legend (246-5343) Phone: (858) 768-5800 Fax: (877) 455-9587

