

HRP anti-GFAP Antibody

Catalog# / Size	837505 / 25 µg
Clone	SMI 25
Regulatory Status	RUO
Other Names	Glial fibrillary acidic protein
Isotype	Mouse IgG2b, κ
Description	

Glial fibrillary acidic protein is an intermediate filament (IF) protein that is expressed by numerous cell types of the central nervous system (CNS) including astrocytes and ependymal cells. GFAP has also been found to be expressed in glomeruli and peritubular fibroblasts, Leydig cells of the testis, keratinocytes, osteocytes and chondrocytes and stellate cells of the pancreas and liver. GFAP is a type III IF protein that is closely related to its non-epithelial family members, vimentin, desmin, and peripherin, which are all involved in the structure and function of the cell's cytoskeleton. GFAP is thought to help to maintain astrocyte mechanical strength, as well as the shape of cells.

Type III intermediate filaments are highly conserved and contain three domains, named the head, rod and tail domains. This rod domain coils around that of another filament to form a dimer, with the N-terminal and C-terminal of each filament aligned. Type III filaments such as GFAP are capable of forming both homodimers and heterodimers; GFAP can polymerize with other type III proteins or with neurofilament protein (NF-L). Interestingly, GFAP and other type III IF proteins cannot assemble with keratins, the type I and II intermediate filaments: in cells that express both proteins, two separate intermediate filament networks form.

To form networks, the initial GFAP dimers combine to make staggered tetramers, which are the basic subunits of an intermediate filament. The non-helical head and tail domains are necessary for filament formation. The head and tail regions have greater variability of sequence and structure. In spite of this increased variability, the head of GFAP contains two conserved arginines and an aromatic residue that are required for proper assembly.

Product Details

Verified Reactivity	Human, Mouse, Rat
Antibody Type	Monoclonal
Host Species	Mouse
Formulation	This antibody is provided in 50% glycerol in aqueous buffered solution with preservatives.
Preparation	The antibody was purified by affinity chromatography and conjugated to HRP under optimal conditions
Concentration	0.5 mg/ml
Storage & Handling	Upon receipt, the antibody solution should be stored undiluted at -20°C, and protected from prolonged exposure to light.
Application	IHC-P - Quality tested WB - Verified
Recommended Usage	Each lot of this antibody is quality control tested by formalin-fixed paraffin-embedded immunohistochemical staining. For immunohistochemistry, a concentration range of 1.0 - 5.0 µg per ml is suggested. For Western blotting, the suggested use of this reagent is 1.0 - 5.0 µg per ml. It is recommended that the reagent be titrated for optimal performance for each application.
RRID	AB_2721603 (BioLegend Cat. No. 837505)

Antigen Details

Structure	GFAP is a 432 amino acid protein with a molecular mass of approximately 50 kD.
Distribution	Tissue distribution: GFAP is expressed by numerous cell types of the central nervous system (CNS) including astrocytes, ependymal cells, and Bergmann glia cells (protoplasmic astrocyte). GFAP is expressed in cells lacking fibronectin. Cellular distribution: cytoskeleton and cytosol
Function	GFAP is a class-III intermediate filament and a structural constituent of the cytoskeleton. It is a cell-specific marker that is used to distinguish astrocytes from other glial cells during the development of the CNS.
Biology Area	Cell Biology, Cell Motility/Cytoskeleton/Structure, Neuroscience, Neuroscience Cell Markers
Molecular Family	Intermediate Filaments
Antigen References	1. Khakh BS, Sofroniew MV. 2015. <i>Nat. Neurosci.</i> 18:942-52. PubMed
Gene ID	2670

Related Protocols

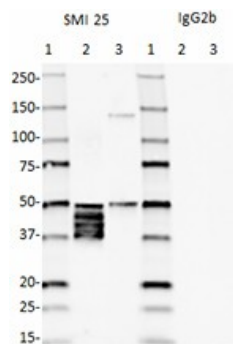
[Western Blotting Protocol](#)

[Immunohistochemistry Protocol for Paraffin-Embedded Sections](#)

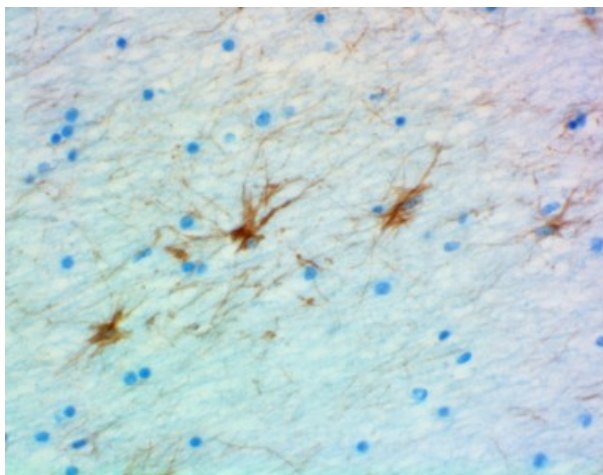
Other Formats

Anti-GFAP, Purified anti-GFAP, HRP anti-GFAP, Alexa Fluor® 594 anti-GFAP, Alexa Fluor® 488 anti-GFAP, Alexa Fluor® 647 anti-GFAP

Product Data



Western blot of HRP anti-GFAP (clone SMI 25), and isotype-matched IgG2b control. Lane 1: Molecular weight marker; Lane 2: 20 µg of human brain lysate; Lane 3: 20 µg of rat brain lysate. Blots were incubated with 1 µg/mL of each primary antibody overnight at 4°C. The isotype-matched blot was further incubated with secondary antibody. Enhanced chemiluminescence was used as the detection system.



IHC staining of HRP anti-GFAP Antibody (Clone SMI 25) on formalin-fixed paraffin-embedded human cerebellum brain tissue. After antigen retrieval using Retrieve-All Antigen Unmasking System 3, the tissue was incubated with the primary antibody at 5 µg/mL for one hour at room temperature. DAB was used for detection followed by hematoxylin and Bluing solution counterstaining.

For research use only. Not for diagnostic use. Not for resale. BioLegend will not be held responsible for patent infringement or other violations that may occur with the use of our products.

*These products may be covered by one or more Limited Use Label Licenses (see the BioLegend Catalog or our website, www.biolegend.com/ordering#license). BioLegend products may not be transferred to third parties, resold, modified for resale, or used to manufacture commercial products, reverse engineer functionally similar materials, or to provide a service to third parties without written approval of BioLegend. By use of these products you accept the terms and conditions of all applicable Limited Use Label Licenses. Unless otherwise indicated, these products are for research use only and are not intended for human or animal diagnostic, therapeutic or commercial use.

BioLegend Inc., 8999 BioLegend Way, San Diego, CA 92121 www.biolegend.com
Toll-Free Phone: 1-877-Bio-Legend (246-5343) Phone: (858) 768-5800 Fax: (877) 455-9587