

## LEGENDplex™ Mouse EPO Capture Bead B7, 13X

|                          |  |
|--------------------------|--|
| <b>Catalog# / Size</b>   | 740695 / 100 tests (270 µL)  |
| <b>Regulatory Status</b> | RUO  |
| <b>Other Names</b>       | HSC, Erythropoietin  |
| <b>Description</b>       | The Mouse HSC Panel Mix and Match Capture Beads offer flexible customization within the panel (13-plex) with the following items listed below: |

740686 LEGENDplex™ Mouse IL-34 Capture Bead A4, 13X  
740056 LEGENDplex™ Mouse IL-5 Capture Bead A5, 13X  
740687 LEGENDplex™ Mouse M-CSF Capture Bead A6, 13X  
740688 LEGENDplex™ Mouse TPO Capture Bead A7, 13X  
740057 LEGENDplex™ Mouse IL-6 Capture Bead A8, 13X  
740689 LEGENDplex™ Mouse GM-CSF Capture Bead A10, 13X  
740690 LEGENDplex™ Mouse IL-15 Capture Bead B2, 13X  
740692 LEGENDplex™ Mouse TGF-β1 Capture Bead B3, 13X  
740691 LEGENDplex™ Mouse IL-3 Capture Bead B4, 13X  
740693 LEGENDplex™ Mouse LIF Capture Bead B5, 13X  
740694 LEGENDplex™ Mouse SCF Capture Bead B6, 13X  
740695 LEGENDplex™ Mouse EPO Capture Bead B7, 13X  
740696 LEGENDplex™ Mouse CXCL12 (SDF-1) Capture Bead B9, 13X

Selected items will be used together with:

740684 LEGENDplex™ Mouse HSC Panel Standard  
740685 LEGENDplex™ Mouse HSC Panel Detection Antibodies  
740620 LEGENDplex™ Buffer Set H (Set Up Beads, Buffers, Plate Sealers, SA-PE, and Matrix)  
740377 or 740379 Filter Plate or V-bottom Plate

The LEGENDplex™ Mouse HSC Panel (13-plex) is a bead-based multiplex assay panel, using fluorescence-encoded beads suitable for use on various flow cytometers. It allows for simultaneous quantification of 13 key targets involved in hematopoietic stem cell differentiation and lineage specific markers, including IL-34, IL-5, M-CSF, TPO, IL-6, GM-CSF, IL-15, TGF-β1, IL-3, LIF, SCF, EPO, and CXCL12 (SDF-1). This assay panel provides higher detection sensitivity and broader dynamic range than traditional ELISA methods. The panel has been validated for use on cell culture supernatant, serum, and plasma samples.

### Product Details

---

|                            |   |
|----------------------------|---|
| <b>Verified Reactivity</b> | Mouse   |
| <b>Application</b>         | <a href="#">Multiplex</a>   |
|                            | Learn more about LEGENDplex™ at <a href="https://www.biolegend.com/legendplex">biolegend.com/legendplex</a> |
|                            | Download the <a href="#">LEGENDplex™ software here</a> .  |

### Antigen Details

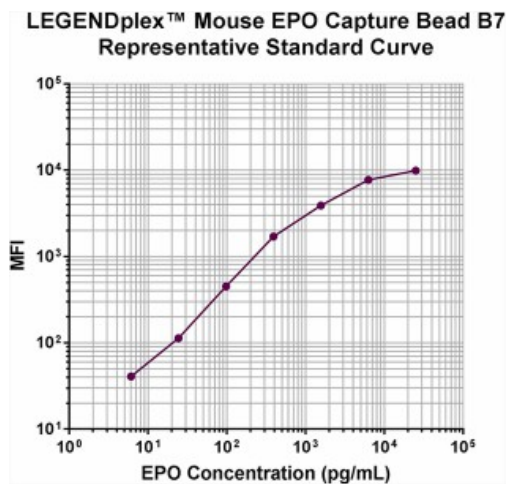
---

|                         |                                      |
|-------------------------|--------------------------------------|
| <b>Biology Area</b>     | Cell Biology, Signal Transduction    |
| <b>Molecular Family</b> | Cytokines/Chemokines, Growth Factors |
| <b>Gene ID</b>          | <a href="#">13856</a>                |

### Related Protocols

---

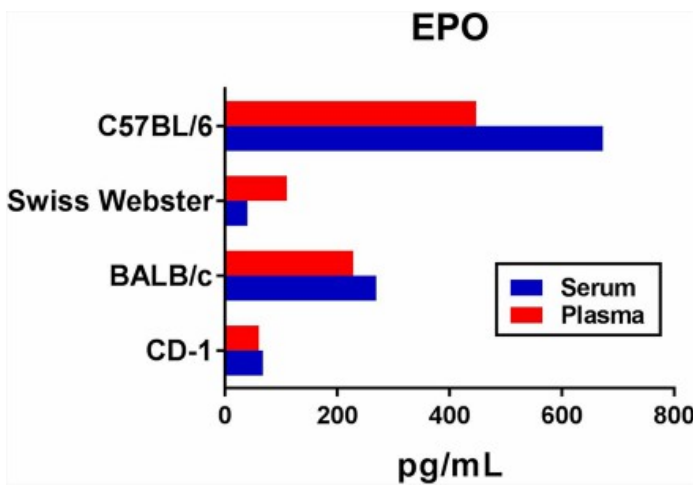
## Product Data



Data generated using the following LEGENDplex™ Mix & Match Reagents:

- Mouse EPO Capture Bead B7, 13X (Cat. # 740695)
- Mouse HSC Panel Detection Antibodies (Cat. # 740685)
- Mouse HSC Panel Standard (Cat. # 740684)
- Buffer Set H (Cat. # 740620)

**Note: Data acquired on a BD FACSCalibur™ flow cytometer.**



Serum and plasma samples of the following mouse strains were pooled from a minimum of ten mice each, and tested for the endogenous levels of the proteins using the LEGENDplex™ Mouse HSC Panel.

For research use only. Not for diagnostic use. Not for resale. BioLegend will not be held responsible for patent infringement or other violations that may occur with the use of our products.

\*These products may be covered by one or more Limited Use Label Licenses (see the BioLegend Catalog or our website, [www.biolegend.com/ordering#license](http://www.biolegend.com/ordering#license)). BioLegend products may not be transferred to third parties, resold, modified for resale, or used to manufacture commercial products, reverse engineer functionally similar materials, or to provide a service to third parties without written approval of BioLegend. By use of these products you accept the terms and conditions of all applicable Limited Use Label Licenses. Unless otherwise indicated, these products are for research use only and are not intended for human or animal diagnostic, therapeutic or commercial use.

BioLegend Inc., 8999 BioLegend Way, San Diego, CA 92121 [www.biolegend.com](http://www.biolegend.com)  
Toll-Free Phone: 1-877-Bio-Legend (246-5343) Phone: (858) 768-5800 Fax: (877) 455-9587